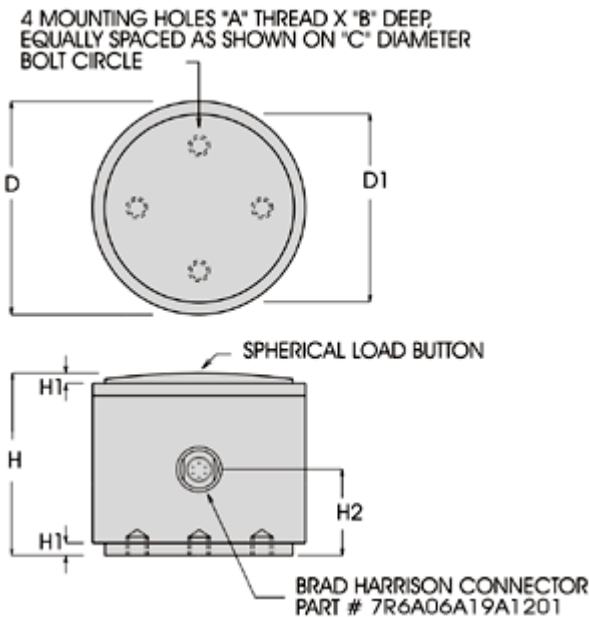


LOW PROFILE COMPRESSION ONLY LOAD COLUMN LOAD CELL

CLC SERIES LOAD CELL

**CAPACITY RANGES:
50,000, 100,000, 200,000,
300,000, 400,000 LBS.**

Our CLC Series is our high capacity compression only load cell, featuring low profile compact size for a wide range of portable and dedicated applications. The loading diameter (D1) is slightly convex for accurate load distribution. Low deflection through design results in ultra fast frequency response. All ranges are made from 17-4ph heat treated stainless steel and incorporate a stainless steel molded connector system designed to resist washdown and splash. The mating connector, sold separately, is available in three different cable lengths.



SPECIFICATIONS

Rated Output (R.O.): 2 mV/V nominal
 Nonlinearity: 0.25% of R.O.
 Hysteresis: 0.25% of R.O.
 Nonrepeatability: 0.1% of R.O.
 Zero Balance: 1.0% of R.O.
 Compensated Temp. Range: 60° to 160°F
 Safe Temp. Range: -65° to 200°F
 Temp. Effect on Output: 0.005% of Load/°F
 Temp. Effect on Zero: 0.01% of R.O./°F
 Terminal Resistance: 350 ohms nominal
 Excitation Voltage: 10 VDC
 Safe Overload: 150% of R.O.
 Deflection: 0.001 @ R.O.

DIMENSIONS (INCHES)

MODEL	CAPACITY LBS.	D	D1	H	H1	H2	BUTTON RADIUS	A	B	C	NATURAL RINGING FREQUENCY HZ	WT. LBS.
CLC-50K	50,000	2.750	2.060	2.250	.250	1.000	20.0	1/4-28	.250	1.500	32,000	5
CLC-100K	100,000	2.750	2.060	2.250	.250	1.000	20.0	1/4-28	.250	1.500	32,000	6
CLC-200K	200,000	3.500	2.810	4.000	.250	1.875	24.0	3/8-24	.375	2.500	32,000	8
CLC-300K	300,000	4.250	3.560	4.500	.250	2.125	24.0	3/8-24	.375	2.500	32,000	9
CLC-400K	400,000	4.500	3.810	5.000	.250	2.375	24.0	3/8-24	.375	2.500	32,000	10