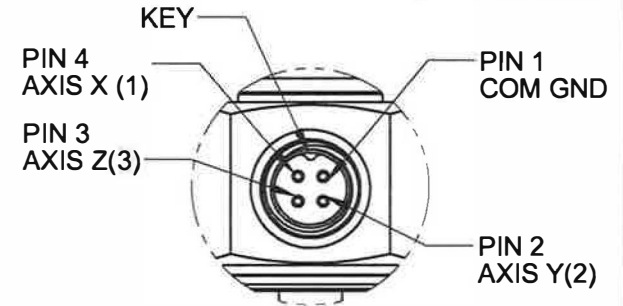
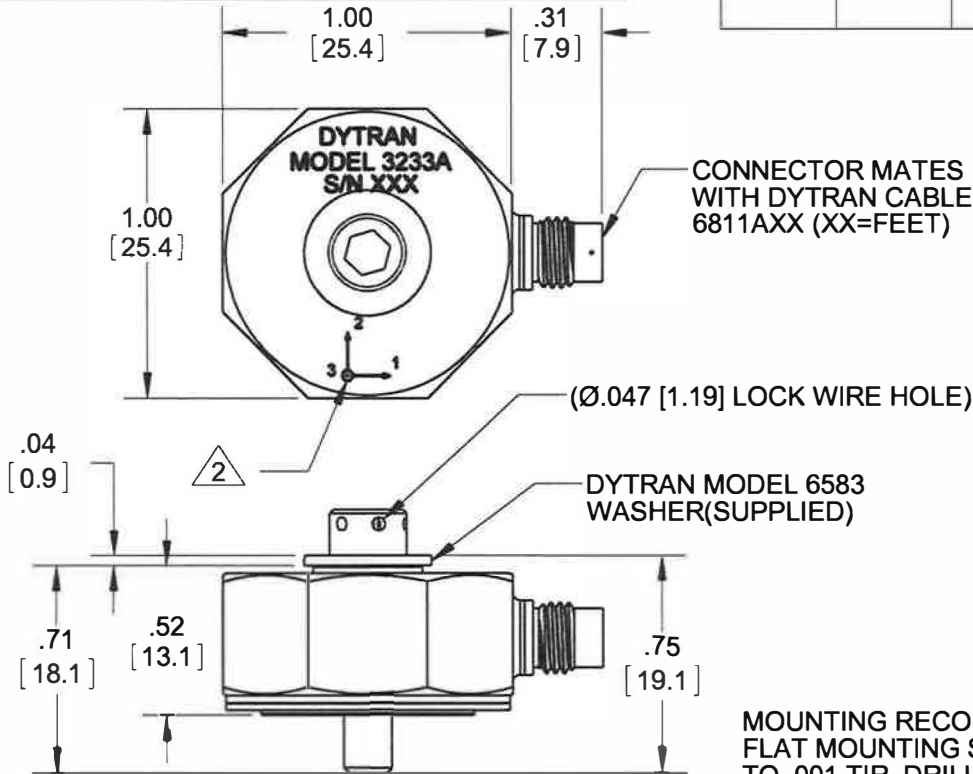


PROPRIETARY AND CONFIDENTIAL

THE INFORMATION CONTAINED IN THIS DRAWING IS THE SOLE PROPERTY OF DYTRAN INSTRUMENTS INC. ANY REPRODUCTION IN PART OR AS A WHOLE WITHOUT THE WRITTEN PERMISSION OF DYTRAN INSTRUMENTS INC. IS PROHIBITED

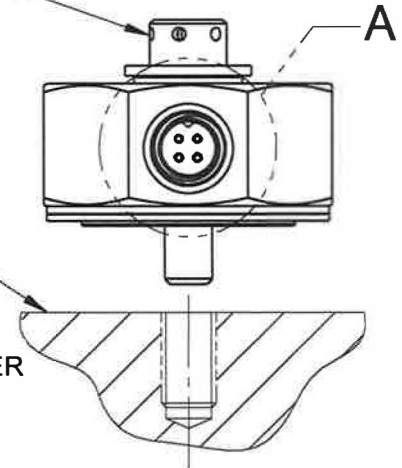
REVISIONS

REV	ECN	DESCRIPTION	BY/DATE	CHK	APPR
B	10584	SEE ECN	RA 11/26/13	MH	<i>[Signature]</i>



**DETAIL A
SCALE 2:1**

DYTRAN MODEL 6582
8-32 MTG SCREW
(SUPPLIED)



MOUNTING RECOMMENDATIONS: PREPARE FLAT MOUNTING SURFACE Ø.80 [20.3], FLAT TO .001 TIR. DRILL AND TAP 8-32 UNF-3B ∇ .300 [7.62] MIN. RECOMMENDED MOUNTING TORQUE: 15 LB IN +5/-0 LB IN. FOR BEST FREQUENCY RESPONSE ACCELEROMETER MUST CONTACT MOUNTING SURFACE OVER ENTIRE MOUNTING SURFACE OF ACCELEROMETER

- 3. WEIGHT: 30 GRAMS MAX
- 2 ARROWS INDICATE DIRECTION OF ACCELERATION FOR POSITIVE OUTPUT.
- 1. MATERIAL: TITANIUM ALLOY

NOTES: UNLESS OTHERWISE SPECIFIED

CONTRACT NO.



TITLE:
**OUTLINE/INSTALLATION
DRAWING MODEL 3233A**

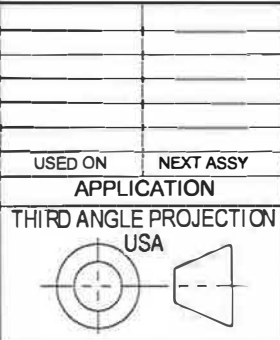
UNLESS OTHERWISE SPECIFIED:
INTERPRET DIM & TOL PER ASME Y14.5M - 1994.
REMOVE BURRS.
COUNTERSINK INTERNAL THDS 90° TO MAJOR DIA.
CHAM EXT THDS 45° TO MINOR DIA.
THD LENGTHS AND DEPTHS ARE FOR MIN FULL THDS.
THDS PER MIL-S-7742.
DIMENSIONS APPLY AFTER FINISHING.

UNLESS OTHERWISE SPECIFIED:
DIMENSIONS ARE IN INCHES.
DIMENSIONS IN BRACKETS [] ARE IN MILLIMETERS
TOLERANCES ARE:
INCHES METRIC ANGLES
XX ± .03 X ± 0.8 ± 1°
.XXX ± .010 .XX ± 0.25

APPROVALS		DATE
ORIG	PML	10/25/03
CHK	MH	11/27/13
APP	PML	06/22/04
APP		

SIZE	CAGE CODE	DWG. NO.	REV
A	2W033	127-3233A	B

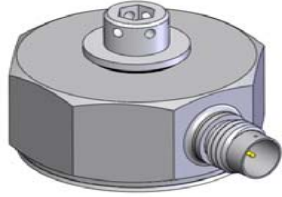
SCALE: NONE SOLIDWORKS SHEET 1 OF 1



ALL MACHINED SURFACES.
TOTAL RUNOUT WITHIN .005.
BREAK SHARP EDGES .005 TO .010.
MACHINED FILLET RADII .005 TO .015.
WELDING SYMBOLS PER AWS A2.4.
ABBREVIATIONS PER MIL-STD-12.

DO NOT SCALE DRAWING

MODEL NUMBER 3233A	PERFORMANCE SPECIFICATION	DOC NO. PS3233A
	ACCELEROMETER, TRIAXIAL, IEPE	REV A, ECN 11263, 09/02/14



- HERMETICALLY SEALED
- CASE ISOLATION
- 8-32 MOUNTING PROVISION

	ENGLISH		SI	
PHYSICAL				
Weight, Max	1.05	oz	30	grams
Mounting	8-32 Screw		8-32 Screw	
Connector Type [1]	4-PIN		4-PIN	
Material, Case/ Connector	Titanium Alloy		Titanium Alloy	
PERFORMANCE				
Sensitivity, +/-10% [2]	1000	mV/g	101.9	mV/ m/s ²
Range, Full Scale (Each Axis)	5	± g pk	49.05	± m/s ² pk
Frequency Range Axis 1 & 2, +/- 10%	.3 to 4000	Hz	.3 to 4000	Hz
Frequency Range Axis 3, +/- 10%	.3 to 6000	Hz	.3 to 6000	Hz
Element Natural Frequency	>20	kHz	>20	kHz
Equivalent Electrical Noise	0.0001	g rms	0.001	m/s ² rms
Linearity [3]	1	% F.S.	1	% F.S.
Transverse Sensitivity Max	5	%	5	%
ENVIRONMENTAL				
Vibration Max	500	± g pk	4905	± m/s ² pk
Shock Max	5000	± g pk	49050	± m/s ² pk
Operating Temperature	-60 to +200	°F	-51 to +93	°C
Seal	Hermetic		Hermetic	
ELECTRICAL				
Supply Current Range [4]	2 to 20	mA	2 to 20	mA
Compliance Voltage Range (Each Axis)	+18 to +30	VDC	+18 to +30	VDC
Output Impedance, Typ.	100	Ω	100	Ω
Output Bias Voltage	+11 to +13	VDC	+11 to +13	VDC
Discharge Time Constant	0.9 to 2.0	Sec	0.9 to 2.0	Sec
Ground Isolation, Min.	10	MΩ	10	MΩ

This family also includes:

Model	Sensitivity (mV/g)	Range (Gpeak)	Resolution (Grms)	Oper. Temp (°F)	TC

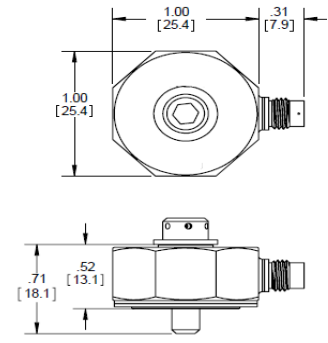
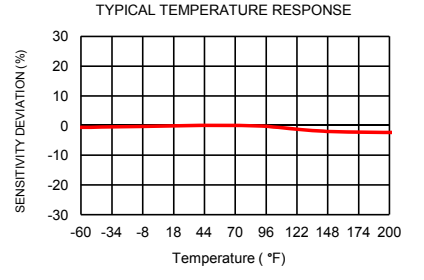
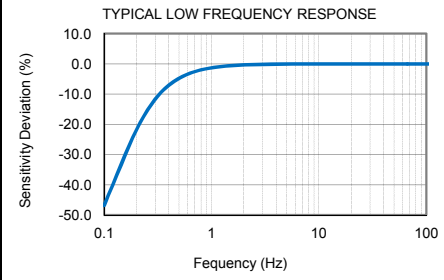
Refer to the performance specifications of the products in this family for detailed description.

Supplied Accessories:

- 1) Accredited Calibration Certificate (ISO 17025)
- 2) Washer 6583 and Mounting Screw 6582

Notes:

- [1] Connector mates with Dytran Cable Assy. Model 6811AXX. (XX = Length in Feet)
- [2] Measured At 100 Hz, 1 Grms per ISA RP 37.2
- [3] Measured using zero-based best straight-line method, % of F.S. or any lesser range.
- [4] Do not apply power to this device without current limiting, 20mA Max, To do so will destroy the integral IC amplifier
- [5] Case grounded to signal ground. Case isolated from mounting surface
- [6] In the interest of constant product improvement, we reserve the right to change specifications without notice



Units on the line drawing are in inches, units in brackets are in millimeters. Refer to 127-3233A for more information.



21592 Marilla Street, Chatsworth, California 91311 Phone: 818.700.7818 Fax:818.700.7880
www.dytran.com For permission to reprint this content, please contact info@dytran.com



Presented by: Absolute Gauge Technologies
 sales@absolutegauge.com; www.absolutegauge.com,
 Toronto: 416 754 3168, Montreal: 514 695 5147, Toll Free: 1 888 754 7008