

Kestrel 2200 Plus

Digital Realtime Motion Capture System



CAMERA

Frame Size (pixels)	2.2 Megapixels
Resolution	2048 x 1088
Frame Rate at Full Resolution	332 fps
Sensor Maximum Frame Rate	10,000 fps
Sensor Type	Global Shutter
Camera Power Supply	HCP-8
Camera Lens	8mm Fixed or 12-36mm Varifocal
Camera Connectors	Ethernet, Sync in/out
Camera Cabling	Standard Cat5E, Power over Ethernet
Camera Body Dimensions	4.75"D x 3.62"T x 3.62" W / 12.1cm D x 9.2cm T X 9.2cm W
Camera Weight (including ringlight)	1.98lbs / 0.90kg
Number of Camera Mount Points	Five (5)

RINGLIGHT

Strobe Type	Near Infrared (750 nm), Full Infrared (850 nm)
Strobe Electronics	Integrated , Software Reprogrammable
LEDs	36 Surface Mount
Adjustable Illumination	Yes



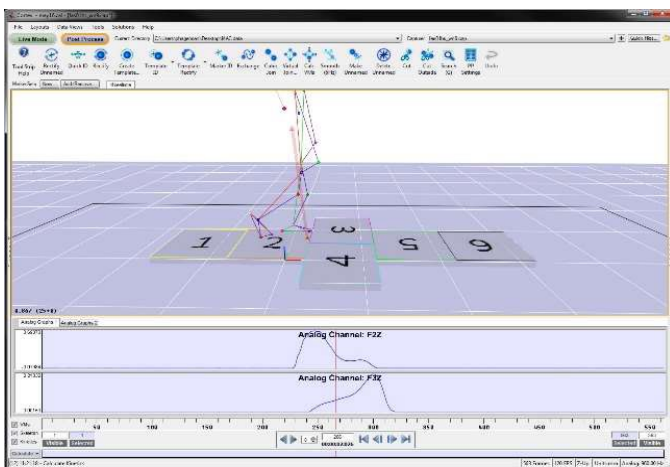


ENVIRONMENTAL

Temperature, Operating 10° to 25°C
50° to 77°F

Temperature, Storage -40° to 65°C
-40° to 149°F

Relative Humidity 20% to 80%
(non-condensing)



SYSTEM CONNECTIVITY

Plug and Play Compatibility Yes

System Connectivity Gigabit Ethernet

Custom Control Interface Yes

Camera Number Indicator Yes

Integrated Camera Display Panel No

Insight Auto-Focus Yes

Communication Status Indicators Yes

Maximum Number of Cameras Unlimited

Multiple Camera Types in System Yes

Genlock to External Video Source Yes

Synchronize to External Signal Yes

IP Addressable Yes

IP Reconfigurable Yes

External A/D Sync and Clock Yes

Motion Analysis Corporation

707-579-6500

sales@motionanalysis.com

www.motionanalysis.com

6085 State Farm Drive, Suite 100
Rohnert Park, CA 94928



Presented by: Absolute Gauge Technologies
sales@absolute-gauge.com; www.absolute-gauge.com,
Toronto: 416 754 3168, Montreal: 514 695 5147, Toll Free: 1 888 754 7008