

# MV-CA060-11GM

6 MP 1/1.8" CMOS GigE Area Scan Camera

**GEN*<i>i>*CAM**

**GigE**  
VISION



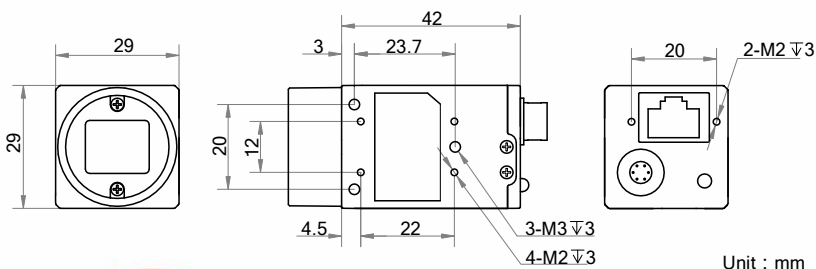
## Introduction

MV-CA060-11GM camera adopts Sony® IMX178 sensor to provide high-quality image. It uses GigE interface to transmit non-compressed images in real time with max. frame rate reaching 17 fps.

## Key Feature

- Adopts GigE interface and max. transmission distance of 100 meters without relay.
- Up to 128 MB local memory for burst transmission and retransmission.
- Supports auto exposure control, LUT, Gamma correction, etc.
- Supports hardware trigger, software trigger, etc.
- Compatible with GigE Vision Protocol V2.0, GenICam Standard, and third-party software based on these protocol and standard.

## Dimension



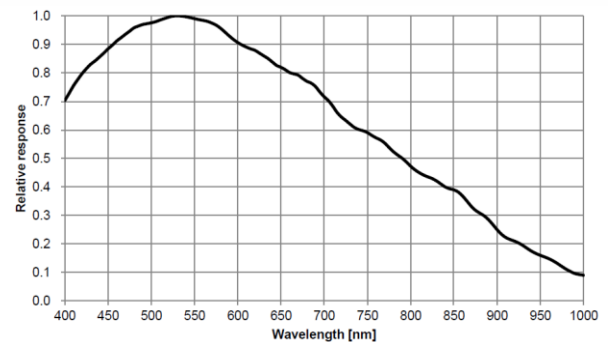
## Available Model

Mono camera: MV-CA060-11GM

## Applicable Industry

Electronic semiconductor, factory automation, logistic code reading, medical packaging, etc.

## Sensor Quantum Efficiency



## Specification

<b>Model</b>	<b>MV-CA060-11GM</b>
<b>Camera</b>	
<b>Sensor type</b>	CMOS, rolling shutter
<b>Sensor model</b>	Sony® IMX178
<b>Pixel size</b>	2.4 µm × 2.4 µm
<b>Sensor size</b>	1/1.8"
<b>Resolution</b>	3072 × 2048
<b>Max. frame rate</b>	17 fps @3072 × 2048
<b>Dynamic range</b>	71.3 dB
<b>SNR</b>	41.3 dB
<b>Gain</b>	0 dB to 20 dB
<b>Exposure time</b>	27 µs to 2.5 sec
<b>Exposure mode</b>	Off/Once/Continuous exposure mode, supports Global Reset
<b>Mono/color</b>	Mono
<b>Pixel format</b>	Mono 8/10/10p/12/12p
<b>Binning</b>	Supports 1 × 1, 2 × 2
<b>Decimation</b>	Not support
<b>Reverse image</b>	Supports horizontal and vertical reverse image output
<b>Image buffer</b>	128 MB
<b>Electrical feature</b>	
<b>Data interface</b>	Gigabit Ethernet, compatible with Fast Ethernet
<b>Digital I/O</b>	6-pin Hirose connector provides power and I/O, including opto-isolated input × 1 (Line 0), opto-isolated output × 1 (Line 1), bi-directional non-isolated I/O × 1 (Line 2).
<b>Power supply</b>	12 VDC, supports PoE
<b>Power consumption</b>	Typ. 2.5 W@12 VDC
<b>Mechanical</b>	
<b>Lens mount</b>	C-Mount
<b>Dimension</b>	29 mm × 29 mm × 42 mm (1.1" × 1.1" × 1.7")
<b>Weight</b>	Approx. 68 g (0.15 lb.)
<b>Ingress protection</b>	IP30 (under proper lens installation and wiring)
<b>Temperature</b>	Working temperature: 0 °C to 50 °C (32 °F to 122 °F) Storage temperature: -30 °C to 70 °C (-22 °F to 158 °F)
<b>Humidity</b>	20% to 80% RH, non-condensing
<b>General</b>	
<b>Client software</b>	MVS or third-party software meeting with GigE Vision Protocol
<b>Operating system</b>	32/64-bit Windows XP/7/10, 32/64-bit Linux and 64-bit MacOS
<b>Compatibility</b>	GigE Vision V2.0, GenICam
<b>Certification</b>	CE, RoHS, KC

**HIKROBOT**

Hangzhou Hikrobot Co., Ltd.  
 en.hikrobotics.com

© Hangzhou Hikrobot Co., Ltd. All Rights Reserved.

Hangzhou Hikrobot does not tolerate any infringement. Any organization or individual may not imitate or reproduce in whole or in part of the content. The data herein is based on Hikrobot's internal evaluation. Actual data may vary depending on specific configuration and operating condition. The information herein is subject to change without notice. All the content has been checked conscientiously. Nevertheless, Hikrobot shall not be liable to damages resulting from errors, inconsistencies or omissions.