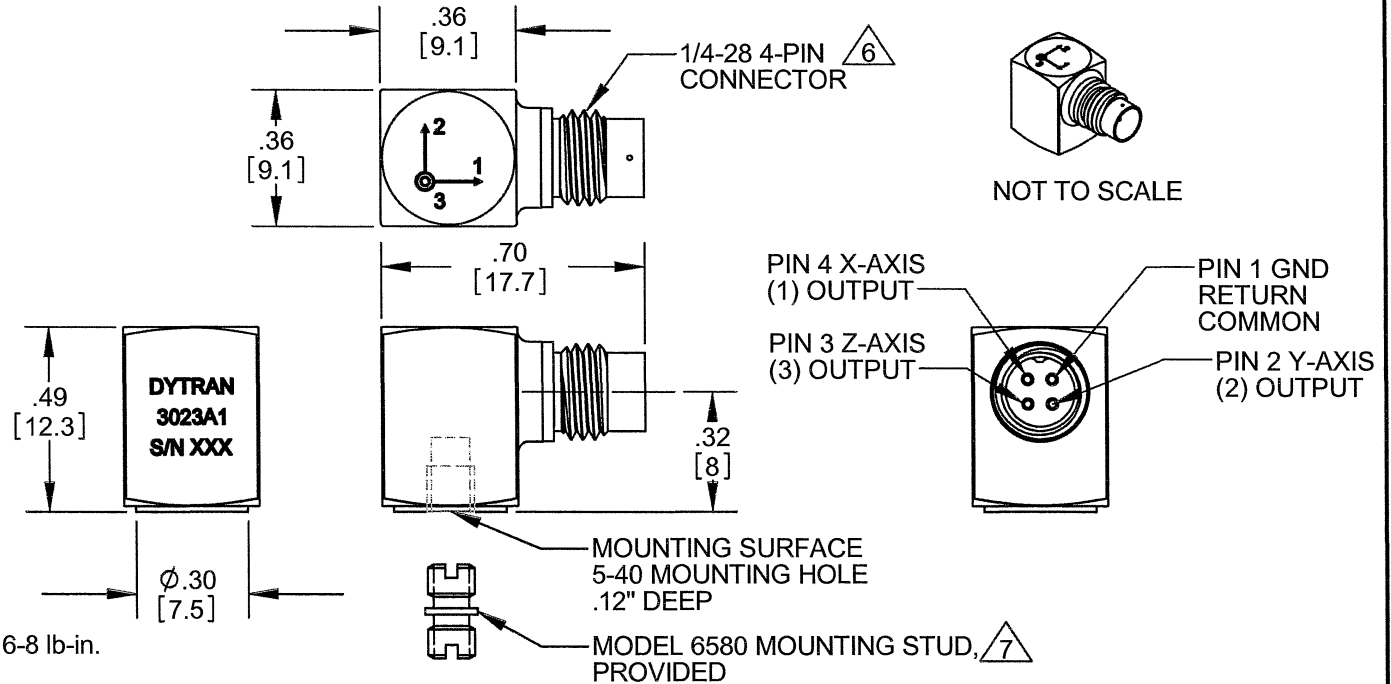


PROPRIETARY AND CONFIDENTIAL

THE INFORMATION CONTAINED IN THIS DRAWING IS THE SOLE PROPERTY OF DYTRAN INSTRUMENTS INC. ANY REPRODUCTION IN PART OR AS A WHOLE WITHOUT THE WRITTEN PERMISSION OF DYTRAN INSTRUMENTS INC. IS PROHIBITED

REVISIONS

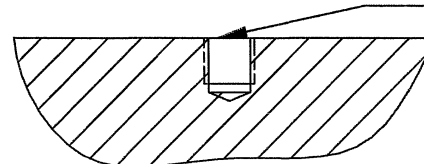
| REV. | ECN | DESCRIPTION | BY/DATE | CHK | APPR |
|------|------|------------------------------------|-----------------|-----|-------------|
| A | 6250 | ADDED NOTES 5, 6, & 7, REFORMATTED | RA, 12/04/09 | ey | [Signature] |



7 RECOMMENDED MOUNTING TORQUE 6-8 lb-in.

6 MATES WITH DYTRAN 6811AXX OR 6824AXX CABLE (XX=LENGTH IN FEET)

5. OPERATIONAL TEMPERATURE: RANGE -60° TO +250°F
4. SENSITIVITY: 5mV/G NOMINAL
3. WEIGHT: 4 GRAMS NOM
2. ARROWS INDICATE ACCELERATION DIRECTION FOR POSITIVE OUTPUT
1. MATERIAL: TITANIUM ALLOY



MOUNTING RECOMMENDATIONS:
 PREPARE SURFACE AT LEAST Ø.30 [7.5]
 SURFACE FLATNESS MUST BE EQUAL OR BETTER THAN .001 TIR. TAP 5-40 UNC-2B ∇ .120 MIN

NOTES: UNLESS OTHERWISE SPECIFIED.

| | |
|----------------------------|-----------|
| USED ON | NEXT ASSY |
| APPLICATION | |
| THIRD ANGLE PROJECTION USA | |

UNLESS OTHERWISE SPECIFIED:
 INTERPRET DIM & TOL PER ASME Y14.5M - 1994.
 REMOVE BURRS.
 COUNTERSINK INTERNAL THDS 90° TO MAJOR DIA.
 CHAM EXT THDS 45° TO MINOR DIA.
 THD LENGTHS AND DEPTHS ARE FOR MIN FULL THDS.
 THDS PER MIL-S-7742.
 DIMENSIONS APPLY AFTER FINISHING.
 ALL MACHINED SURFACES.
 TOTAL RUNOUT WITHIN .005.
 BREAK SHARP EDGES .005 TO .010.
 MACHINED FILLET RADII .005 TO .015.
 WELDING SYMBOLS PER AWS A2.4.
 ABBREVIATIONS PER MIL-STD-12.

UNLESS OTHERWISE SPECIFIED:
 DIMENSIONS ARE IN INCHES. DIMENSIONS IN BRACKETS [] ARE IN MILLIMETERS
 TOLERANCES ARE:
 INCHES METRIC ANGLES
 .XX ± .03 X ± 0.8 ± 1°
 .XXX ± .010 .XX ± 0.25

MATERIAL

FINISH

DO NOT SCALE DRAWING

| | |
|--------------|---------------|
| CONTRACT NO. | |
| APPROVALS | |
| ORIG | PML 8/18/2005 |
| CHK | PML 8/18/2005 |
| APP | PML 8/18/05 |
| DATE | |

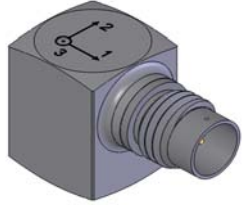
Chatsworth, CA

MASTER ONLY IF IN RED

TITLE: **OUTLINE/INSTALLATION DRAWING, MODEL 3023A4**

| | | | |
|---------------|------------------------|----------------------------|--------------|
| SIZE A | CAGE CODE 2W033 | DWG. NO. 127-3023A4 | REV A |
| SCALE: NONE | SOLIDWORKS | SHEET 1 OF 1 | |

| | | |
|-------------------------------------|-----------------------------------|----------------------------|
| Model Number 3023A4 | PERFORMANCE SPECIFICATIONS | DOC NO PS3023A4 |
| TRI AXIAL IEPE ACCELEROMETER | | REV B, ECN 11377, 10/14/14 |



- **STUD MOUNT**
- **EXCELLENT LINEARITY**
- **ULTRA LOW WEIGHT**

PHYSICAL

Weight, Max.
Connector
Mounting Provision
Material, Housing/Connector
Sensing Element
Element Style

| ENGLISH | | SI | |
|------------------|----|------------------|-------|
| 0.14 | oz | 4.0 | grams |
| 4- PIN | | 4- PIN | |
| 5-40 Tapped Hole | | 5-40 Tapped Hole | |
| Titanium Alloy | | Titanium Alloy | |
| Quartz | | Quartz | |
| Shear | | Shear | |

PERFORMANCE

Sensitivity, -10 / +15% [1]
Range for ± 5 Volts Output
Frequency Response
Resonant Frequency
Broad Band Resolution
Spectral Noise
Linearity [2]
Maximum Transverse Sensitivity
Strain Sensitivity @ 250µε

| | | | |
|-------------|-------------|--------------|-----------------------------|
| 5 | mV/g | 0.5 | mV/m/s ² |
| ±1000 | g | ±9806.65 | m/s ² |
| 1.5 to 4000 | Hz | 1.5 to 4000 | Hz |
| -5 / +15% | Hz | 1.5 to 10000 | Hz |
| > 40 | kHz | > 40 | kHz |
| 0.014 | Grms | 0.137 | m/s ² rms |
| 1.25Hz | µGrms/v(Hz) | 0.059 | µm/s ² rms/v(Hz) |
| 10Hz | µGrms/v(Hz) | 0.0196 | µm/s ² rms/v(Hz) |
| 100Hz | µGrms/v(Hz) | 0.0039 | µm/s ² rms/v(Hz) |
| 1000Hz | µGrms/v(Hz) | 0.00098 | µm/s ² rms/v(Hz) |
| 10000Hz | µGrms/v(Hz) | 0.00078 | µm/s ² rms/v(Hz) |
| 1 | % F.S. | 1 | % F.S. |
| 5 | % | 5 | % |
| 0.006 | g/µε | 0.06 | m/s ² /µε |

ENVIRONMENTAL

Maximum Vibration
Maximum Shock
Temperature Range
Seal
Magnetic Sensitivity at 100 Gauss

| | | | |
|-------------|---------|-------------|-----------------------|
| ±1000 | Gpeak | ±9807 | m/s ² peak |
| 5000 | Gpeak | 49033 | m/s ² peak |
| -60 to +250 | °F | -51 to +121 | °C |
| Hermetic | | Hermetic | |
| 0.00005 | g/Gauss | 4.905 | m/s ² /T |

ELECTRICAL

Supply Current Range [3]
Compliance Voltage Range
Output Impedance, Typ
Bias Voltage
Discharge Time Constant
Electrical Isolation

| | | | |
|---------------|--------|---------------|--------|
| 2 to 20 | mA | 2 to 20 | mA |
| 18 to 30 | Volts | 18 to 30 | Volts |
| 100 | Ω | 100 | Ω |
| 9 to 11 | VDC | 9 to 11 | VDC |
| 0.3 to 1.5 | Sec | 0.3 to 1.5 | Sec |
| Case Grounded | GΩ,min | Case Grounded | GΩ,min |

This family also includes:

| Model | Sensitivity (mV/g) | Frequency Response (Hz) | Mounting | Operating Temp (°F) |
|--------|--------------------|---------------------------|-------------------|---------------------|
| 3023A | 10 (-10 to +15%) | 1.5 to 10000 (-5 to +15%) | Adhesive | -60 to +250 |
| 3023A1 | 10 (-10 to +15%) | 1.5 to 10000 (-5 to +15%) | 5-40 Tapped Hole | -60 to +250 |
| 3023A2 | 10 (-10 to +15%) | 1.5 to 10000 (-5 to +15%) | 10-32 Tapped Hole | -60 to +250 |
| 3023A3 | 5 (-10 to +15%) | 1.5 to 10000 (-5 to +15%) | Adhesive | -60 to +250 |
| 3023A5 | 1 (±5%) | 1.5 to 10000 (-5 to +15%) | Adhesive | -60 to +250 |
| 3023A6 | 5 (-10 to +15%) | 1.5 to 10000 (-5 to +15%) | 10-32 Tapped Hole | -60 to +250 |
| 3023A9 | 1 (±10%) | 1.5 to 10000 (-5 to +15%) | 10-32 Tapped Hole | -60 to +250 |

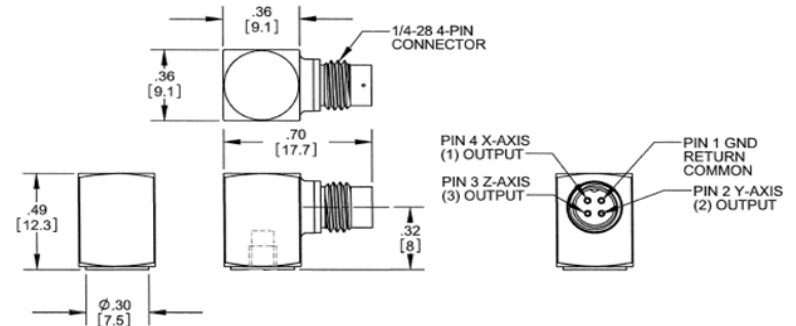
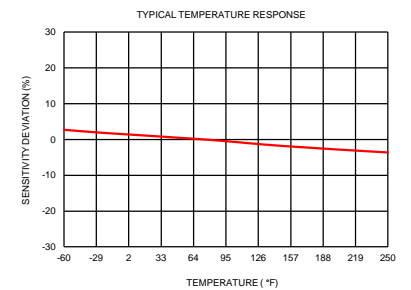
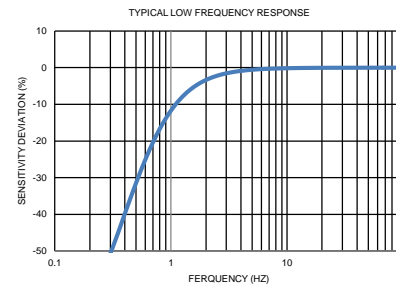
Refer to the performance specifications of the products in this family for detailed description

Supplied Accessories:

- 1) Accredited calibration certificate (ISO 17025)
- 2) Model 6580 Mounting Stud, Quantity 1

Notes:

- [1] Measured at 100Hz, 1 Grms per ISA RP 37.2.
- [2] Measure using zero-based straight line method, % of F.S. or any lesser range.
- [3] Do not apply power to this system without current limiting, 20 mA MAX. To do so will destroy the IC charge amplifier.
- [4] In the interest of constant product improvement, we reserve the right to change specifications without notice.



Units on the line drawing are in inches, units in brackets are in millimeters. Refer to 127-3023A4 for more information.



21592 Marilla Street, Chatsworth, California 91311 Phone: 818.700.7818 Fax: 818.700.7880 www.dytran.com
For permission to reprint this content, please contact info@dytran.com



Presented by: Absolute Gauge Technologies
sales@absolute-gauge.com; www.absolute-gauge.com,
Toronto: 416 754 3168, Montreal: 514 695 5147, Toll Free: 1 888 754 7008