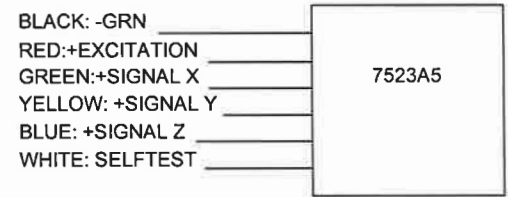
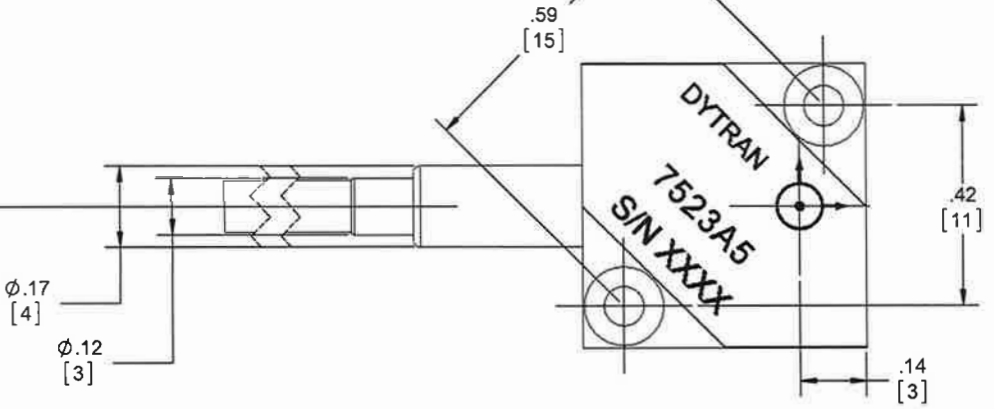


PROPRIETARY AND CONFIDENTIAL

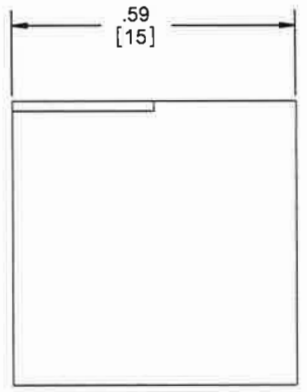
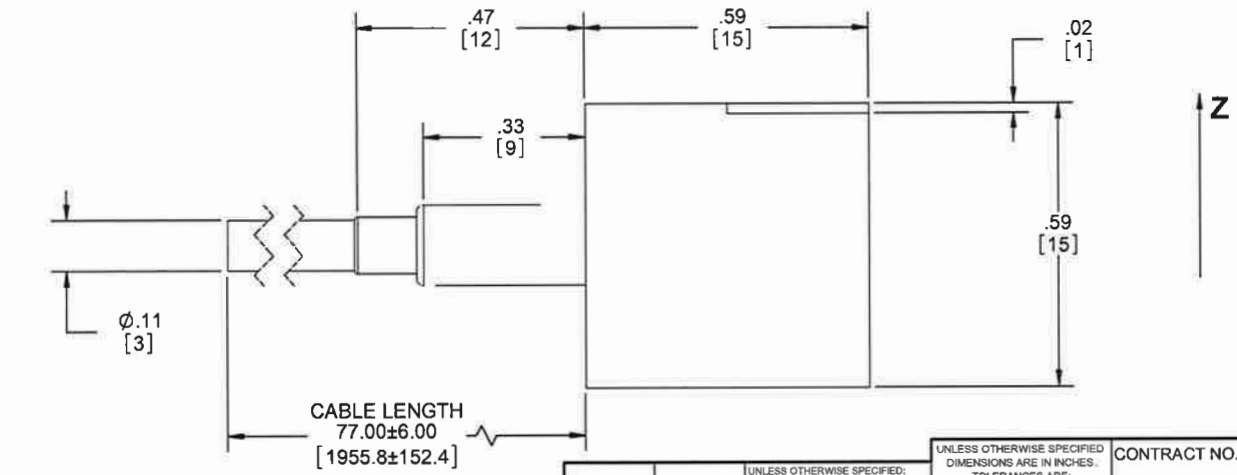
THE INFORMATION CONTAINED IN THIS DRAWING IS THE SOLE PROPERTY OF DYTRAN INSTRUMENTS INC. ANY REPRODUCTION IN PART OR AS A WHOLE WITHOUT THE WRITTEN PERMISSION OF DYTRAN INSTRUMENTS INC IS PROHIBITED.

REVISIONS

REV.	ECN	DESCRIPTION	BY/DATE	CHK	APPR
B	5263	REVERSED POLARITY MARKING & ARROWS	JS 06/05/08	RA	DV
C	5630	ADDED X,Y,Z ARROWS	JS 12/02/08	RA	DV
D	8496	REVISED ARROW LOCATIONS	JS 04/09/12	LN	DV
E	9672	ADDED CABLE LENGTH	AB 03/04/13	JS	DV
F	11273	ADDED NOTE 1	AS 09/22/14	D	A



WIRING DIAGRAM



1 RECOMMENDED MOUNTING TORQUE 6-7 LB-IN

NOTES: UNLESS OTHERWISE SPECIFIED

DRILL HOLE SIZE	TOLERANCE	UNLESS OTHERWISE SPECIFIED: INTERPRET DIM & TOL PER ASME Y14.5M - 1994.
.0135 THRU .125	+ .004 / - .001	REMOVE BURRS
.1300 THRU .250	+ .005 / - .001	COUNTERSINK INTERNAL THDS 90° TO MAJOR DIA.
.2510 THRU .500	+ .008 / - .001	CHAM EXT THDS 45° TO MINOR DIA.
.5010 THRU .750	+ .008 / - .001	THD LENGTHS AND DEPTHS ARE FOR MIN FULL THDS.
.7510 THRU 1.000	+ .010 / - .001	THDS PER MIL-S-7742
1.001 THRU 2.000	+ .012 / - .001	DIMENSIONS APPLY AFTER FINISHING

THIRD ANGLE PROJECTION
USA

ALL MACHINED SURFACES
TOTAL RUNOUT WITHIN .005
BREAK SHARP EDGES .005 TO .010
MACHINED FILLET RADII .005 TO .015
WELDING SYMBOLS PER AWS A2.4
ABBREVIATIONS PER MIL-STD-12.

UNLESS OTHERWISE SPECIFIED DIMENSIONS ARE IN INCHES. TOLERANCES ARE:		CONTRACT NO.	
DECIMALS XX ± .010 XXX ± .005	ANGLES ± 1°		
MATERIAL: ALUMINUM ALLOY	FINISH:	APPROVALS	DATE
		ORIG DV	01/18/08
		CHK CES	03/14/08
		APP PML	
		APP DV	10/10/14
DO NOT SCALE DRAWING			

MASTER COPY
DYTRAN INSTRUMENTS, INC. Chatsworth, CA

TITLE: **DC ACCELEROMETER, TRIAXIAL, 50g**

SIZE	CAGE CODE	DWG NO	REV
B	2W033	127-7523A5	F

SCALE: 4:1 SOLIDWORKS SHEET 1 of 1

SPECIFICATIONS, SERIES 7523A TRIAXIAL ACCELEROMETER

PERFORMANCE

	A1	A2	A3	A5	UNITS
Input	±2	±5	±15	±50	g
Output, bias, ±20%	2.5	2.5	2.5	2.5	V
Output range	±1.1	±1.4	±1.4	±1.8	V
Bandwidth, X & Y Axes ±3db	0-1500	0-1500	0-1500	0-400	Hz
Z Axis ±3db	0-500	0-500	0-1500	0-400	Hz
Sensitivity, ± 20%	550	280	93	36	mV/g
Output Noise, nom.	3	5	10	40	mGrms
Output Impedance	3500	35,000	3500	<500	Ω

PERFORMANCE FOR ALL MODEL NUMBERS (T_c=+25°C)

	MIN	NOM	MAX	UNITS
Maximum Mechanical Shock			4000	g peak
Resonance Frequency		5000		Hz
Transverse Sensitivity			2	%
Operating Temperature	-55		+125	°C
Compensated Temperature Range (CTR)	-20		+70	°C
Thermal Zero in CTR			0.03	% FS/°C
Thermal Sensitivity Drift in CTR			0.02	% FS/°C
Storage Temperature	-55		-150	°C
Non-Linearity			0.3	%
Excitation, regulated	4.8		5.2	VDC
Current consumption		4.5		mA

PHYSICAL PARAMETERS FOR ALL MODEL NUMBERS

	Anodized Aluminum				UNITS
	A1	A2	A3	A5	
Case Material					
Cable Length	77	77	77	77	inch
Mounting Provision	two M2 screws (provided)				
Mounting Torque	6-7				lb-in

	NOM				UNITS
	A1	A2	A3	A5	
Case Length	0.59	0.59	0.59	0.59	inch
Case Width	0.59	0.59	0.59	0.59	inch
Case Height	0.30	0.59	0.59	0.59	inch
Mounting Hole Spacing	0.59	0.59	0.59	0.59	inch
Mass	10	10	10	10	grams

NOTES:

SUPPLIED ACCESSORIES:

A1 (2) Mounting Screws (Model 6722), M2 x 12 flathead
A3, A5 (2) Mounting Screws (Model 6914), M2 x 20 flathead



Presented by: Absolute Gauge Technologies
sales@absolutegauge.com; www.absolutegauge.com,
Toronto: 416 754 3168, Montreal: 514 695 5147, Toll Free: 1 888 754 7008