

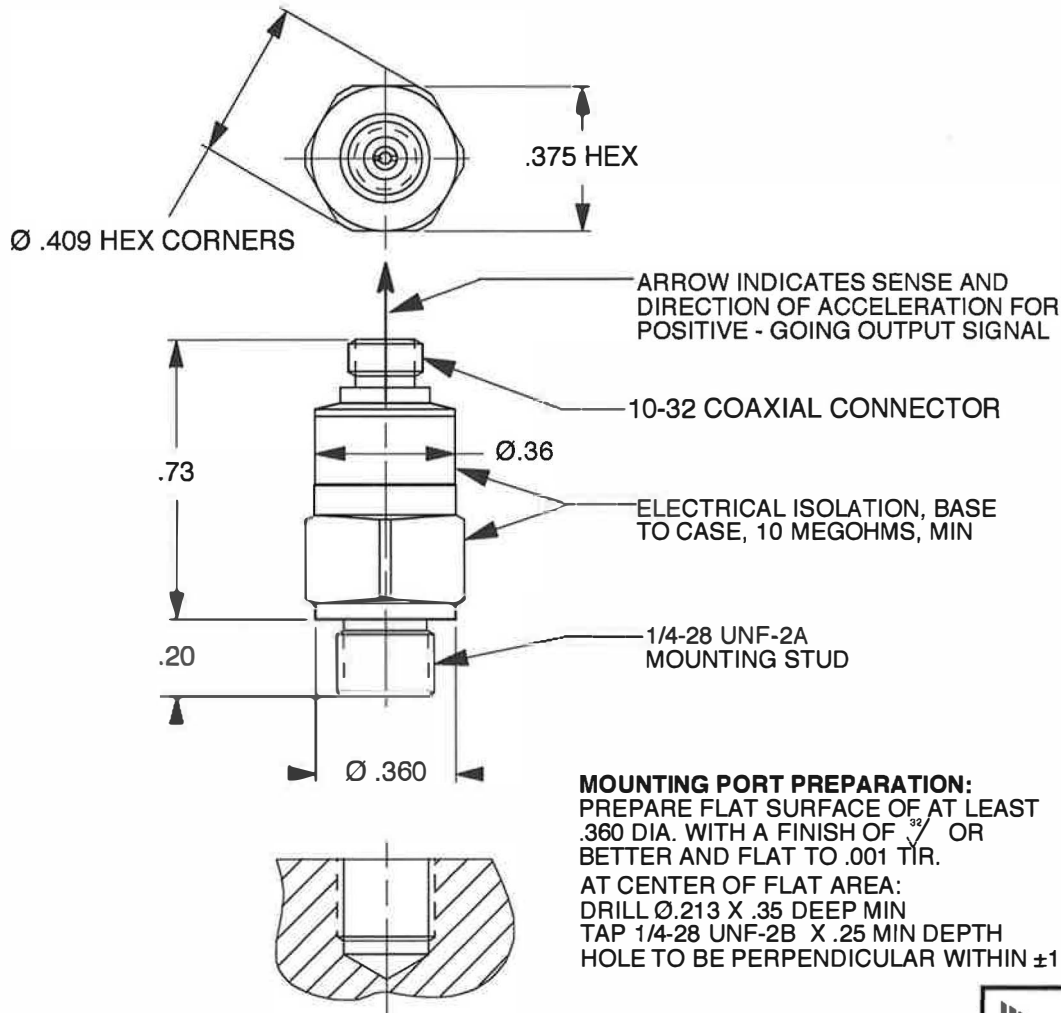
DYTRAN PROPRIETARY AND CONFIDENTIAL

THE INFORMATION CONTAINED IN THIS DRAWING IS THE SOLE PROPERTY OF DYTRAN INSTRUMENTS, INC. AND ANY REPRODUCTION IN PART OR AS A WHOLE OR ANY OTHER DISSEMINATION OF THIS INFORMATION WITHOUT THE WRITTEN PERMISSION OF DYTRAN INSTRUMENTS, INC. IS PROHIBITED.

REV	ECN	DESCRIPTION	BY/DATE	CHK	APPR
A	10476	REMOVED WELD GROOVES	NC/11-5-13	EM	W



Presented by: Absolute Gauge Technologies  
 sales@absolutegauge.com; www.absolutegauge.com,  
 Toronto: 416 754 3168, Montreal: 514 695 5147, Toll Free: 1 888 754 7008



3. MATERIAL: 300 SERIES STAINLESS STEEL.
2. WEIGHT: 8 GRAMS.
1. RECOMMENDED MOUNTING TORQUE ON 3/8 IN. HEX: 20 TO 25 LB.-INCHES.

		<b>MASTER ONLY IF IN RED</b>		CHATSWORTH, CA.	
SCALE	DESIGN	DATE			
2X	N.C.	6/2/98			
DRAWN	DATE	PART NO.			
N.C.	6/2/98	MODEL 3019A			
CHECKED	DATE	MAT'L			
R.A.	6/2/98		REV A		
APPROVED	DATE	NEXT ASSEMBLY	USED ON		
	6/2/98		3019A		
TITLE			DWG NO.		
OUTLINE/INSTALLATION DRAWING, HIGH FREQUENCY ACCELEROMETER MODEL 3019A			127-3019A		
SHEET 1 OF 1					

<b>Model Number</b> 3019A	<b>PERFORMANCE SPECIFICATION</b>	<b>DOC NO</b> PS3019A
<b>MINIATURE IEPE ACCELEROMETER</b>		REV A, ECN 10588, 12/04/13



- MINIATURE SIZE
- EXCELLENT LINEARITY
- HERMETICALLY SEALED

**PHYSICAL**

Weight  
Size  
Connector  
Mounting Provision  
Material  
Element Style

Hex x Height  
Top Mounted  
Integral Stud  
Accelerometer and Connector

ENGLISH		SI	
0.3	oz	8	grams
0.375 x 0.73	Inches	9.5 x 18.5	mm
10-32 Micro Coax		10-32 Micro Coax	
1/4-28 X .20 Long		1/4-28 X .20 Long	
300 SS		300 SS	
Quartz		Quartz	

**PERFORMANCE**

Sensitivity, ±5% [1]  
Range F.S for ± 5 Volts Output  
Frequency Response, ±5%  
Frequency Response, ±3db  
Resonant Frequency  
Equivalent Electrical Noise Floor  
Linearity [2]  
Maximum Transverse Sensitivity  
Strain Sensitivity @ 250µε

10	mV/g	1	mV/m/s <sup>2</sup>
±500	g	±4905	m/s <sup>2</sup>
1 to 10000	Hz	1 to 10000	Hz
.3 to 15000	Hz	.3 to 15000	Hz
>50	kHz	>50	kHz
0.007	grms	0.0687	m/s <sup>2</sup> rms
± 2%	% F.S.	± 2%	% F.S.
5	%	5	%
0.003	g/µε	0.03	m/s <sup>2</sup> /µε

**ENVIRONMENTAL**

Maximum Vibration  
Maximum Shock  
Temperature Range  
Seal, Hermetic

±1000	gpeak	±9810	m/s <sup>2</sup> peak
±3000	gpeak	±29430	m/s <sup>2</sup> peak
-60 to +300	*F	-51 to +149	*C
Welded/Glass To Metal		Welded/Glass To Metal	

**ELECTRICAL**

Supply Current Range [3]  
Compliance Voltage Range  
Output Impedance, Typ  
Bias Voltage  
Discharge Time Constant  
Electrical Isolation, Min.  
Output Signal Polarity for Acceleration Toward Top

2 to 20	mA	2 to 20	mA
+ 18 to +30	Volts	+ 18 to +30	Volts
100	Ω	100	Ω
+7.5 to +9.5	VDC	+7.5 to +9.5	VDC
0.5 to 1.0	Sec	0.5 to 1.0	Sec
10	MΩ	10	MΩ
Positive		Positive	

**This family also includes:**

Model	Sensitivity (mV/g)	Frequency Response (Hz)	Time Constant (Sec)	Operating Temp (*F)

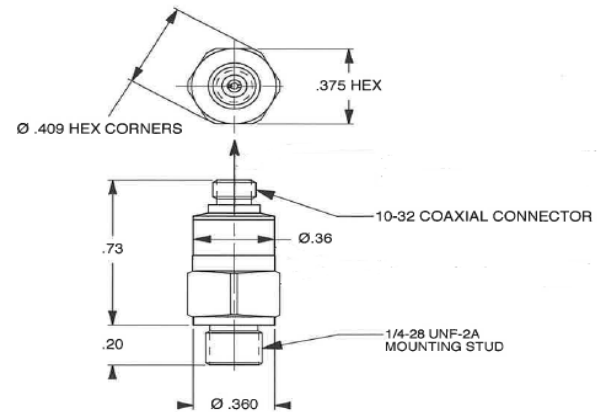
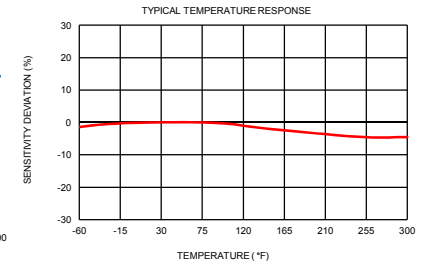
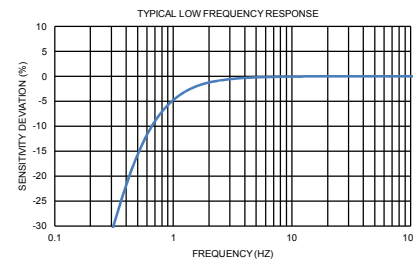
Please refer to the performance specifications of the products in this family for detailed description

**Supplied Accessories:**

- 1) Accredited calibration certificate (ISO 17025)

**Notes:**

- [1] Measure at 100Hz, 1 grms per ISA RP 37.2
- [2] Measure using zero-based straight line method, % of F.S. or any lesser range.
- [3] Do not apply power to this system without current limiting, 20 mA MAX. To do so will destroy the IC charge amplifier.



Units on the line drawing are in inches, units in brackets are in millimeters. Refer to 127-3019A for more information.



21592 Marilla Street, Chatsworth, California 91311 Phone: 818.700.7818 Fax: 818.700.7880 www.dytran.com  
For permission to reprint this content, please contact info@dytran.com



Presented by: Absolute Gauge Technologies  
sales@absolute-gauge.com; www.absolute-gauge.com,  
Toronto: 416 754 3168, Montreal: 514 695 5147, Toll Free: 1 888 754 7008