

PROPRIETARY AND CONFIDENTIAL

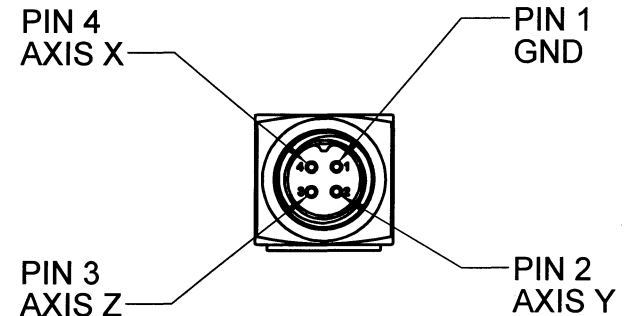
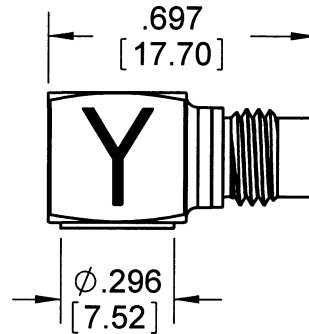
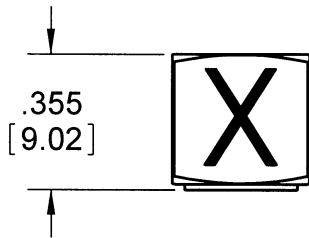
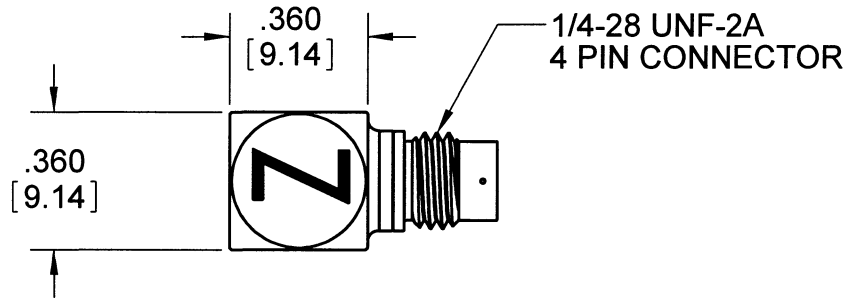
THE INFORMATION CONTAINED IN THIS DRAWING IS THE SOLE PROPERTY OF DYTRAN INSTRUMENTS INC. ANY REPRODUCTION IN PART OR AS A WHOLE WITHOUT THE WRITTEN PERMISSION OF DYTRAN INSTRUMENTS, INC. IS PROHIBITED



Presented by: Absolute Gauge Technologies
 sales@absolutegauge.com; www.absolutegauge.com,
 Toronto: 416 754 3168, Montreal: 514 695 5147, Toll Free: 1 888 754 7008

REVISIONS

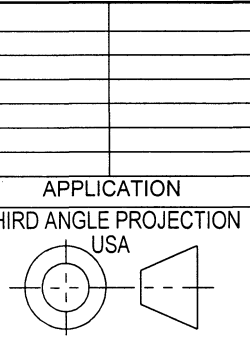
REV	ECN	DESCRIPTION	BY/DATE	CHK	APPR
B	5806	SEE ECN	JS 03/02/09	PA	JL



5. DIMENSIONS IN BRACKETS ARE IN MM
4. SENSITIVITY: 1mV/g
3. HOUSING/CONNECTOR MATERIAL: TITANIUM
2. ARROWS INDICATE DIRECTIONS OF ACCELERATION FOR POSITIVE OUTPUT
1. WEIGHT 3.0 GRAMS

NOTES: UNLESS OTHERWISE SPECIFIED

MOUNTING RECOMMENDATIONS
 PREPARE A SURFACE AT LEAST .300 BY .300. SURFACE FLATNESS MUST BE EQUAL OR BETTER THAN .0001 TIR. USE ONE DROP OF CYANOACRYLATE TO MOUNT THE ACCELEROMETER.



UNLESS OTHERWISE SPECIFIED:
 INTERPRET DIM & TOL PER ASME Y14.5M - 1994.
 REMOVE BURRS.
 COUNTERSINK INTERNAL THDS 90° TO MAJOR DIA.
 CHAM EXT THDS 45° TO MINOR DIA.
 THD LENGTHS AND DEPTHS ARE FOR MIN FULL THDS.
 THDS PER MIL-S-7742.
 DIMENSIONS APPLY AFTER FINISHING.

ALL MACHINED SURFACES. TOTAL RUNOUT WITHIN .005.
 BREAK SHARP EDGES .005 TO .010.
 MACHINED FILLET RADII .005 TO .015.
 WELDING SYMBOLS PER AWS A2.4.
 ABBREVIATIONS PER MIL-STD-12

UNLESS OTHERWISE SPECIFIED:
 DIMENSIONS ARE IN INCHES.
 TOLERANCES ARE:

DECIMALS	ANGLES
.XX ± .010	± 1°
.XXX ± .005	

MATERIAL

FINISH

DO NOT SCALE DRAWING

CONTRACT NO.

APPROVALS		DATE
ORIG	PML	06/12/05
CHK	ANS	09/29/08
APP	<i>DV</i>	3/5/9
APP		

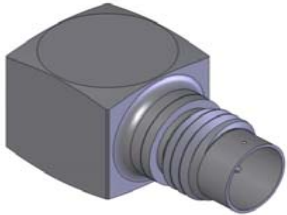
DYTRAN INSTRUMENTS, INC. Chatsworth, CA

MASTER ONLY IF IN RED

TITLE: **OUTLINE/INSTALLATION DRAWING, MODEL 3023A5**

SIZE A	CAGE CODE 2W033	DWG. NO. 127-3023A5	REV B
SCALE: 1:1	SOLIDWORKS	SHEET 1 OF 1	

Model Number 3023A5	PERFORMANCE SPECIFICATIONS	DOC NO PS3023A5
TRI AXIAL IEPE ACCELEROMETER		REV F, ECN 11443, 11/11/14



- MINATURE SIZE
- EXCELLENT LINEARITY
- ULTRA LOW WEIGHT

This family also includes:

Model	Sensitivity (mV/g)	Frequency Response (Hz)	Mounting	Operating Temp (°F)
3023A	10 (-10 to +15%)	1.5 to 10000 (-5 to +15%)	Adhesive	-60 to +250
3023A1	10 (-10 to +15%)	1.5 to 10000 (-5 to +15%)	5-40 Tapped Hole	-60 to +250
3023A2	10 (-10 to +15%)	1.5 to 10000 (-5 to +15%)	10-32 Tapped Hole	-60 to +250
3023A3	5 (-10 to +15%)	1.5 to 10000 (-5 to +15%)	Adhesive	-60 to +250
3023A4	5 (-10 to +15%)	1.5 to 10000 (-5 to +15%)	5-40 Tapped Hole	-60 to +250
3023A6	5 (-10 to +15%)	1.5 to 10000 (-5 to +15%)	10-32 Tapped Hole	-60 to +250
3023A9	1 (±10%)	1.5 to 10000 (-5 to +15%)	10-32 Tapped Hole	-60 to +250

Refer to the performance specifications of the products in this family for detailed description

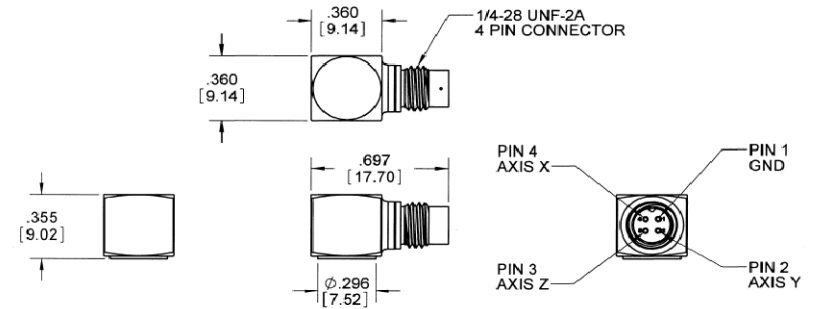
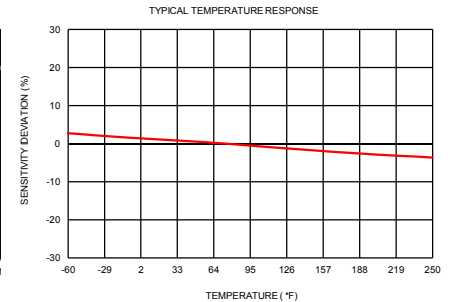
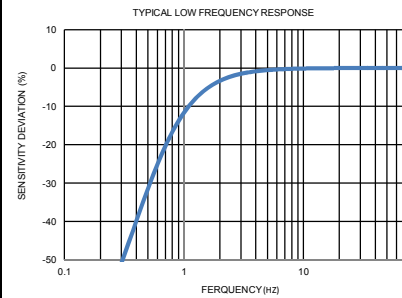
	ENGLISH		SI	
PHYSICAL				
Weight, Max.	0.11	oz	3.0	grams
Connector	1/4-28 UNF-2A		1/4-28 UNF-2A	
Mounting Provision	Adhesive Mount		Adhesive Mount	
Material, Housing/Connector	Titanium Alloy		Titanium Alloy	
Sensing Element	Quartz		Quartz	
Element Style	Shear		Shear	
PERFORMANCE				
Sensitivity, ±5%	1	mV/g	0.1	mV/m/s ²
Range for ± 5 Volts Output	±5000	g	±49033	m/s ²
Frequency Response	1.5 to 5000	Hz	1.5 to 5000	Hz
	-5 / +15%		1.5 to 10000	Hz
Resonant Frequency	> 40	kHz	> 40	kHz
Broad Band Resolution	0.07	Grms	0.69	m/s ² rms
Spectral Noise				
	1.25Hz	0.03	0.29	µm/s ² rms/v(Hz)
	10Hz	0.01	0.098	µm/s ² rms/v(Hz)
	100Hz	0.002	0.0196	µm/s ² rms/v(Hz)
	1000Hz	0.0005	0.0049	µm/s ² rms/v(Hz)
	10000Hz	0.0004	0.0039	µm/s ² rms/v(Hz)
Linearity [2]	1	% F.S.	1	% F.S.
Maximum Transverse sensitivity	5	%	5	%
Strain Sensitivity @ 250µε	0.039	g/µε	0.38	m/s ² /µε
ENVIRONMENTAL				
Maximum Vibration	±600	Gpeak	±5884	m/s ² peak
Maximum Shock	5000	Gpeak	49033	m/s ² peak
Temperature Range	-60 to +250	°F	-51 to +121	°C
Seal	Hermetic		Hermetic	
Magnetic Sensitivity at 100 Gauss	0.00005	g/Gauss	4.905	m/s ² /T
ELECTRICAL				
Supply Current Range [3]	2 to 20	mA	2 to 20	mA
Compliance Voltage Range	18 to 30	Volts	18 to 30	Volts
Output Impedance, Typ	100	Ω	100	Ω
Bias Voltage	7 to 9	VDC	7 to 9	VDC
Discharge Time Constant	0.3 to 1.5	Sec	0.3 to 1.5	Sec
Electrical Isolation	Case Grounded	GΩ, min	Case Grounded	GΩ, min

Supplied Accessories:

- 1) Accredited calibration certificate (ISO 17025)

Notes:

- [1] Measured at 100Hz, 1 Grms per ISA RP 37.2.
- [2] Measure using zero-based straight line method, % of F.S. or any lesser range.
- [3] Do not apply power to this system without current limiting, 20 mA MAX. To do so will destroy the IC charge amplifier.
- [4] In the interest of constant product improvement, we reserve the right to change specifications without notice.



Units on the line drawing are in inches, units in brackets are in millimeters. Refer to 127-3023A5 for more information.



21592 Marilla Street, Chatsworth, California 91311 Phone: 818.700.7818 Fax: 818.700.7880 www.dytran.com
For permission to reprint this content, please contact info@dytran.com



Presented by: Absolute Gauge Technologies
sales@absolute-gauge.com; www.absolute-gauge.com,
Toronto: 416 754 3168, Montreal: 514 695 5147, Toll Free: 1 888 754 7008