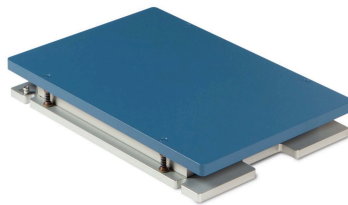


Force Plates / HPS400600

## HPS400600

OPTIMA™-High Performance Series (HPS)  
Previous MN: OPT400600

OPTIMA



The HPS400600 is part of AMTI's High Performance Series (HPS), the most advanced, most accurate force platform system available. The 40×60 cm size is ideal for accommodating average human stride lengths and can also be used in pairs for bilateral jump or balance assessments. For more dynamic movements, multiple plates can be combined to create instrumented floor systems.

For more flexibility with your installation, ask about AMTI's [Modular Rail System](#).

### Standard or High Frequency

The HPS400600 is available in either a Standard Frequency or High Frequency model. High Frequency models can be beneficial for highly dynamic applications or scenarios with increased environmental vibrations.

See the [Specifications Tables](#) below for more details.



## System Information

All of AMTI's Optima series force platform systems ship standard with the force plate, an Optima amplifier, a 30-foot force plate-to-amplifier cable, and the necessary mounting equipment.



### OPT-SC (Optima) Amplifier

- Top-of-the-line signal conditioner
- Pairs exclusively with Optima force plates
- USB 2.0 digital or analog outputs



### Force Plate Cable

- 30 ft. standard length
- Connects amplifier to force plate
- Data transfer and power supply



### Mounting Kit

- 1 pair of mounting rails
- Epoxy and dispenser
- Installation fixtures and instructions



**AGT**

Absolute  
Gauge  
Technologies™

Presented by: Absolute Gauge Technologies  
sales@absolutegauge.com; www.absolutegauge.com,  
Toronto: 416 754 3168, Montreal: 514 695 5147, Toll Free: 1 888 754 7008

## Specifications & Details

Review detailed force plate specifications and model versions below. [Show less](#)

### General Specifications

Units  ▼

Dimensions	400 x 600 x 82.5 mm
Temperature Range	-18°C to 50°C
Channels	Fx, Fy, Fz, Mx, My, Mz
Excitation	10 V maximum
Fx, Fy, Fz Hysteresis	±0.2% full scale output
COP Accuracy*	Less than 0.2 mm*
Mounting Hardware	Recommended
Sensing Elements	Strain gage bridge
Amplifier	Included (OPT-SC)
Outputs	Digital (USB) or Analog
Crosstalk*	±0.05% of applied load*
Measurement Accuracy*	±0.1% of applied load*

\*Typical Value: Minimum applied load of 50 lb

## Capacities and Sensitivities

The table below provides a comparison of the available capacity models for this force plate

Units  ▼

Model Name Suffix (Fz, lb)	1000	2000
Fx, Fy Capacity (N)	2225	4450
Fz Capacity (N)	4450	8900
Mx Capacity (Nm)	1330	2670
My Capacity (Nm)	890	1790
Mz Capacity (Nm)	670	1330
Fx, Fy Sensitivity ( $\mu\text{V/V-N}$ )	0.67	0.34
Fz Sensitivity ( $\mu\text{V/V-N}$ )	0.17	0.08
Mx Sensitivity ( $\mu\text{V/V-Nm}$ )	1.40	0.70
My Sensitivity ( $\mu\text{V/V-Nm}$ )	1.78	0.89
Mz Sensitivity ( $\mu\text{V/V-Nm}$ )	3.27	1.63

## Frequency Models

This force plate is available in a standard and High Frequency (HF) model.

Units  ▼

Model Name Suffix (Fz, lb)	1000		2000	
Frequency Version	Standard	High (HF)	Standard	High (HF)



**AGT**

Absolute  
Gauge  
Technologies™

Presented by: Absolute Gauge Technologies  
sales@absolutegauge.com; www.absolutegauge.com,  
Toronto: 416 754 3168, Montreal: 514 695 5147, Toll Free: 1 888 754 7008

Model Name Suffix (Fz, lb)	1000		2000	
Fx, Fy Natural Frequency (Hz)	280	470	360	600
Fz Natural Frequency (Hz)	370	780	400	830
Top Plate Material	Solid Aluminum	Composite	Solid Aluminum	Composite
Weight (kg)	32	18	32	18

Specifications subject to change without notice.

