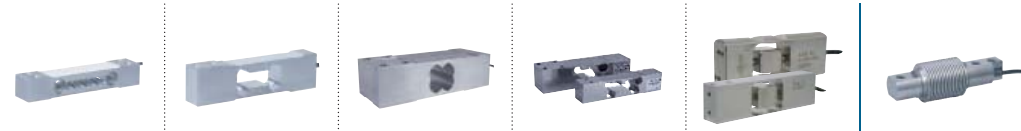
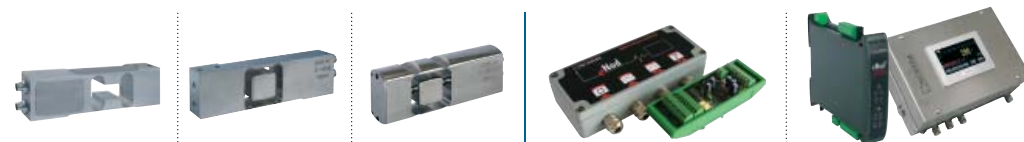


LOAD CELLS



| Model | AQ | AG | AP | AXL - AXH | AVX - AVS | F60X |
|-------------------------------|-------------------------|-------------------------|-------------------|-------------------|---------------------|-------------------|
| Type | Single point | | | | | Bending |
| Rated load capacity (Cn) | 5 kg ... 35 kg | 1 kg ... 100 kg | 75 kg ... 635 kg | 10 kg ... 500 kg | 15 kg ... 75 kg | 5 kg ... 500 kg |
| Accuracy class | C3 / C4 | C3 / C6 | C3 | C3 | C3 / C6 | C3 / C6 |
| Combined error (% Cn) | 0.017 / 0.013 | 0.017 / 0.008 | 0.017 | 0.017 | 0.017 / 0.008 | 0.017 / 0.008 |
| Construction | Aluminum | Aluminum | Aluminum | Stainless steel | Stainless steel | Stainless steel |
| Protection | Coated, IP65 | Coated, IP65 | Coated, IP65 | Sealed, IP69K | Sealed, IP69K EHEDG | Sealed, IP68 |
| Admissible platform size (mm) | 350 x 350 | 400 x 400 | up to 700 x 700 | up to 600 x 600 | up to 600 x 400 | - |
| Certifications | OIML, NTEP, ATEX, IECEx | OIML, NTEP, ATEX, IECEx | OIML, ATEX, IECEx | OIML, ATEX, IECEx | OIML, ATEX, IECEx | OIML, ATEX, IECEx |

ELECTRONICS



● : Standard - ○ : Optional

| Model | AAD | DVX | DVS | eNod3 -Din / -Box | eNod4 -Din / -Box |
|------------------------------|------------------------|------------------------|------------------------|---------------------------------|--|
| Type | Digital Load Cells | | | Controller / Transmitter | |
| Rated load capacity (Cn) | 5 kg ... 75 kg | 15 kg ... 75 kg | 15 kg ... 75 kg | - | - |
| Accuracy class | OIML 3 000 d | OIML 3 000 d | OIML 3 000 d | 0.005 % / OIML 6 000 d | OIML 6 000 d |
| Internal resolution | 24 bits | 24 bits | 24 bits | 24 bits | 24 bits |
| Calibrated resolution | 500 000 pts | 500 000 pts | 500 000 pts | ±500 000 pts | ±500 000 pts |
| Max. measuring speed | 6.25 ... 1600 meas./s. | 6.25 ... 1600 meas./s. | 6.25 ... 1600 meas./s. | 6.25 ... 1600 meas./s. | 6.25 ... 1600 meas./s. |
| Logic Input (I) / Output (O) | ● / ● 2 I / 4 O | ● / ● 2 I / 4 O | ● / ● 2 I / 4 O | ● / ● 2 I / 4 O | ○ / ● 4 I / 4 O |
| Analog output | - | - | - | - | ○ |
| Communication | RS485, CANbus | RS485, CANbus | RS485, CANbus | RS232, RS485, CANbus | USB, RS485, CANbus, Ethernet |
| Construction | Aluminum | Stainless steel | Stainless steel | Rail DIN support / Aluminum box | Rail Din support / Stainless steel Housing |
| Protocols | Modbus CANopen® | Modbus CANopen® | Modbus CANopen® | Modbus CANopen® | Modbus, Profibus-DP, CANopen®, Ethernet/IP, Profinet, EtherCAT |
| Protections | IP65 | Sealed, IP69K | IP69K EHEDG | - / IP67 | - / IP65 |
| Display | - | - | - | - | ○ 4"3 - 5"7 |

scaime



Absolute Gauge Technologies

Presented by: Absolute Gauge Technologies
sales@absolute-gauge.com; www.absolute-gauge.com,
Toronto: 416 754 3168, Montreal: 514 695 5147, Toll Free: 1 888 754 7008

scaime

Dynamic Weighing

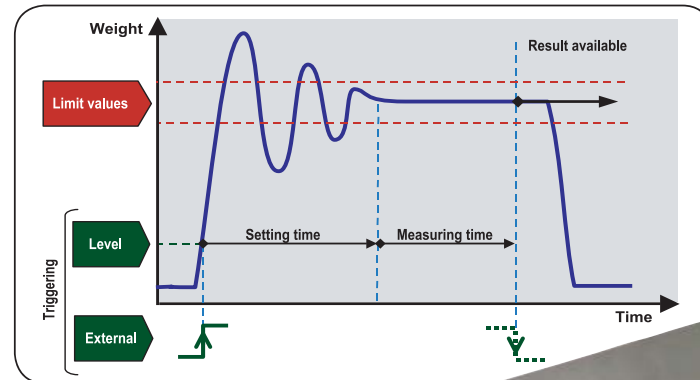
Grading, Check-weighing



FA-CHECKWEIGHING-E-0518 - SCAIME - SIREN 389 325 283 - R.C.S. THONON LES BAINS - SIRET 389 325 283 00015 - Noncontractual pictures - SCAIME reserves the right to bring any modification without prior notice - All rights reserved.

Weighing, controlling at high speed...

SCAIME designs solutions offering speed, accuracy and functions adapted to the specific requirements of dynamic weighing. SCAIME's load cells, electronics and software are a perfect match for checkweighing, and grading applications.



LOAD CELLS:

SCAIME's wide range of load cells allow customers to solve their specific requirements for dynamic weighing.

High speed digital load cells...

SCAIME have developed a range of high performance digital load cells. Specially designed for dynamic applications in hardest environments.

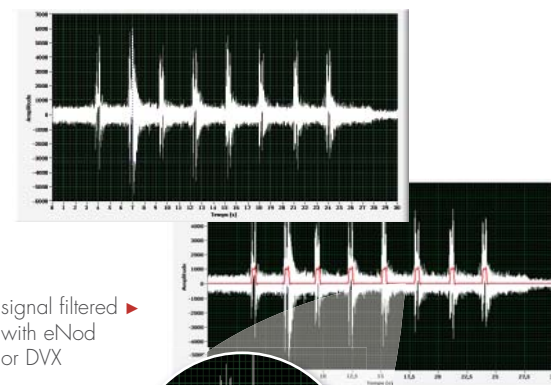
- Single point load cells
- Capacities from 5 to 75 kg
- Integrated eNod electronics
- Dynamic checkweighing functions
- 2 digital inputs and 4 outputs
- CANopen® and MODBUS Communication
- Stainless steel IP69K (DVX/DVS) or aluminum IP65 (AAD)
- Hygienic design, EHEDG compliant (DVS)

A comprehensive range...

- Single point or bending beam load cells
- Capacities from 1 to 5 000 kg
- Aluminum or stainless steel
- Numerous mounting possibilities



▼ checkweigher signal without filtering



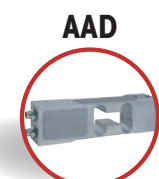
signal filtered with eNod or DVX



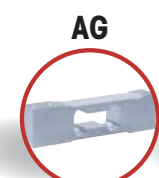
DVS



DVX



AAD



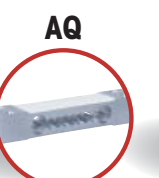
AG



F60X



AVX



AQ



AXL

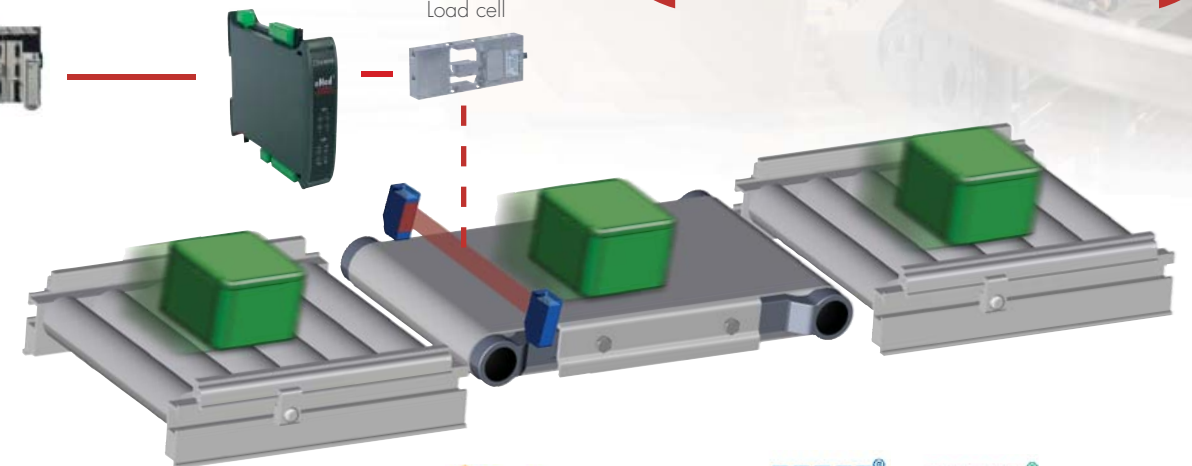


PLC



eNod4-C

Load cell



ELECTRONICS:

With eNod controllers and digital load cells, SCAIME offers a cost effective and powerful solution for the control of dynamic weighing systems.

Powerful functionalities:

In addition to offering 1000 meas./s. transmission rate with an available resolution of $\pm 500\,000$ divisions, eNod and DVX/DVS/AAD integrate specific application software dedicated to dynamic checkweighing:

- It takes care of complete signal processing by calculating automatically weight values.
- It controls by itself the complete weight acquisition process, also taking in consideration external detectors signals.
- It includes powerful digital filters dedicated to vibration noise cancellation.

Designed for communication:

eNod controllers and DVX/DVS/AAD digital load cell are designed to easily be connected to all kinds of PLC's with RS485, RS232 and CANbus, using MODbus-RTU, CANopen®, PROFIBUS-DP, Ethernet/IP, Modbus-TCP, Profinet and EtherCAT protocols.

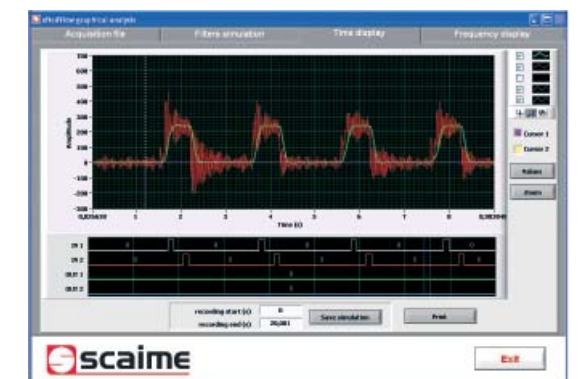
Touchscreen eNodTouch

All eNod4 weighing controllers could be associated with our range of Human-Machine interfaces eNod Touch. These LCD Touchscreens (4"3 to 5"7) allow weight display, system calibration and setting as well as application control.

PC SOFTWARE:

eNodView is the software for DVX/DVS/AAD or eNod's calibration and programming. It is also a powerful tool for signal acquisition and analysis, allowing:

- Graphic visualization of the signal in frequency and time
- Simulation and programming of integrated digital filters



These capabilities make eNodView the ideal tool for the analysis of vibrations in mechanical systems with user optimization of programmable filters.



AGT Absolute Gauge Technologies

Presented by: Absolute Gauge Technologies
sales@absolute-gauge.com; www.absolute-gauge.com,
Toronto: 416 754 3168, Montreal: 514 695 5147, Toll Free: 1 888 754 7008