

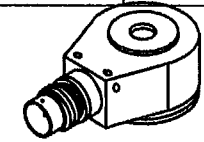
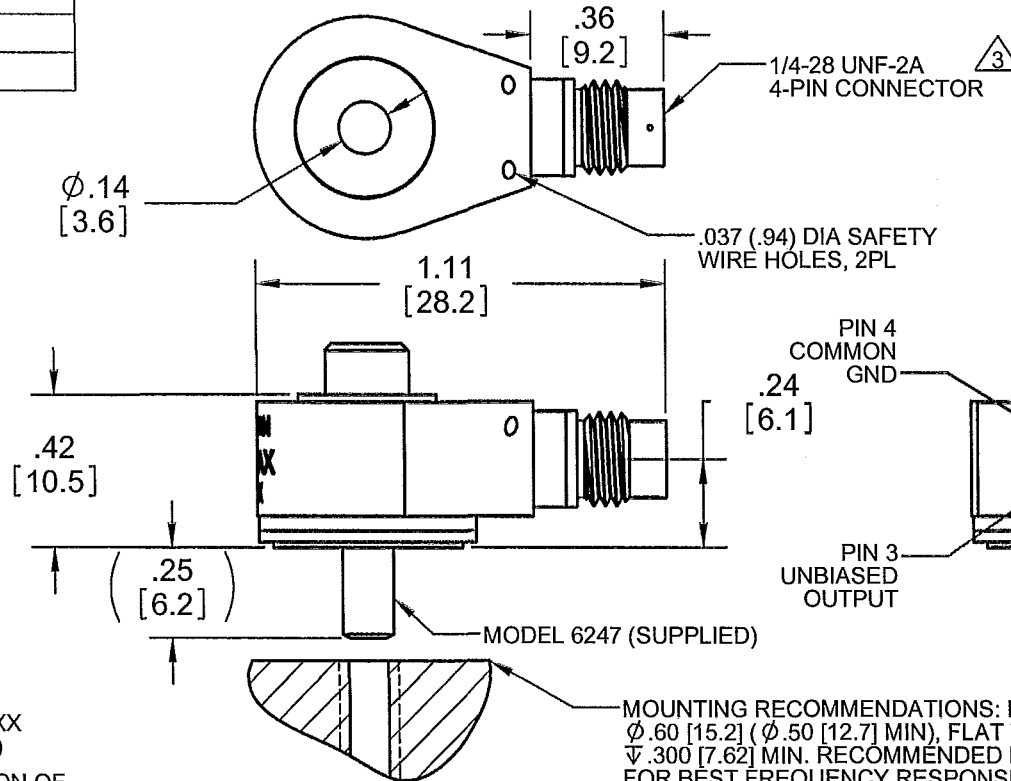
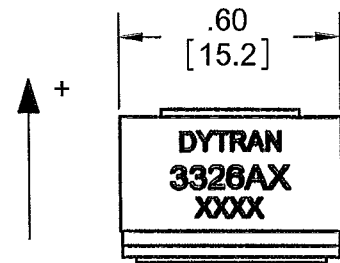
PROPRIETARY AND CONFIDENTIAL

THE INFORMATION CONTAINED IN THIS DRAWING IS THE SOLE PROPERTY OF DYTRAN INSTRUMENTS INC. ANY REPRODUCTION IN PART OR AS A WHOLE WITHOUT THE WRITTEN PERMISSION OF DYTRAN INSTRUMENTS INC. IS PROHIBITED

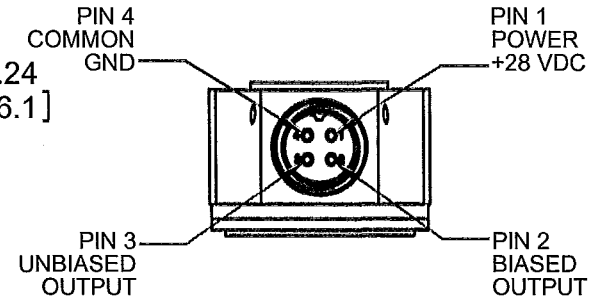
REVISIONS

REV	ECN	DESCRIPTION	BY/DATE	CHK	APPR
A	6644	INITIAL RELEASE	JS 10/20/10	RA	DV
B	8254	.36 [9.2] WAS: .33 [8.4], 1.11 [28.2] WAS: 1.08 [27.5]	JS 01/19/12	<i>RA</i>	<i>AWS</i>

MODEL	SENSITIVITY
3326A1	10mV/g
3326A2	100mV/g



ACTUAL SIZE



4. MATERIAL: TITANIUM

3. MATES WITH DYTRAN 6896AXX CABLE (XX- LENGTH IN FEET)

2. ARROW INDICATES DIRECTION OF ACCELERATION FOR POSITIVE OUTPUT

1. WEIGHT: 10 GRAMS APPROX.

NOTES: UNLESS OTHERWISE SPECIFIED

MOUNTING RECOMMENDATIONS: PREPARE FLAT MOUNTING SURFACE Ø.60 [15.2] (Ø.50 [12.7] MIN), FLAT TO .001TIR. DRILL AND TAP 6-32 UNC-2B ∇.300 [7.62] MIN. RECOMMENDED MOUNTING TORQUE: 6 LB-IN +3/-0 LB IN. FOR BEST FREQUENCY RESPONSE ACCELEROMETER MUST CONTACT MOUNTING SURFACE OVER ENTIRE MOUNTING SURFACE OF ACCELEROMETER

CONTRACT NO.



TITLE:

**OUTLINE / INSTALLATION
DRAWING MODEL 3326A**

APPROVALS		DATE
ORIG	JS	03/26/10
CHK	RA	10/23/10
APP	DV	10/27/10
APP		

SIZE	CAGE CODE	DWG. NO.	REV
A	2W033	127-3326A	B
SCALE: 2:1		SOLIDWORKS	SHEET 1 OF 1

USED ON: _____ NEXT ASSY: _____

APPLICATION: _____

THIRD ANGLE PROJECTION USA

UNLESS OTHERWISE SPECIFIED:
 INTERPRET DIM & TOL PER ASME Y14.5M - 1994.
 REMOVE BURRS.
 COUNTERSINK INTERNAL THDS 90° TO MAJOR DIA.
 CHAM EXT THDS 45° TO MINOR DIA.
 THD LENGTHS AND DEPTHS ARE FOR MIN FULL THDS.
 THDS PER MIL-S-7742.
 DIMENSIONS APPLY AFTER FINISHING.

63
 ALL MACHINED SURFACES.
 TOTAL RUNOUT WITHIN .005.
 BREAK SHARP EDGES .005 TO .010.
 MACHINED FILLET RADII .005 TO .015.
 WELDING SYMBOLS PER AWS A2.4.
 ABBREVIATIONS PER MIL-STD-12.

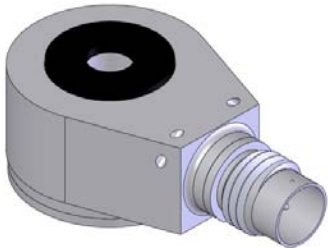
UNLESS OTHERWISE SPECIFIED:
 DIMENSIONS ARE IN INCHES.
 DIMENSIONS IN BRACKETS [] ARE IN MILLIMETERS
 TOLERANCES ARE:
 INCHES METRIC ANGLES
 .XX ±.03 .X ±0.8 ±1°
 .XXX ±0.10 .XX ±0.25

MATERIAL: _____

FINISH: _____

DO NOT SCALE DRAWING

MODEL NUMBER 3326A1	PERFORMANCE SPECIFICATION	DOC NO. PS3326A1
ACCELEROMETER, VDC POWER		REV B, ECN 8681, 05/31/12



- OPERATES FROM +28VDC
- 360° CABLE ORIENTATION
- AIRBORNE APPLICATIONS

PHYSICAL

Weight, Max
Mounting Provision
Connector, side exit [6]
Material Body

	ENGLISH		SI	
Weight, Max	0.35	oz	10	grams
Mounting Provision	Ø.162 thru hole		Ø.162 thru hole	
Connector, side exit [6]	4 PIN	Type	4 PIN	
Material Body	TITANIUM	Material	TITANIUM	

PERFORMANCE

Sensitivity +/- 10% [1]
Range F.S. For ± 5 Volts Output
Frequency Range, ± 5%
Resonant Frequency
Equivalent Electrical Noise Floor
Linearity [2]
Transverse Sensitivity, Max.
Strain Sensitivity @250µε

Sensitivity +/- 10% [1]	10	mV/g	1.02	mV/ m/s ²
Range F.S. For ± 5 Volts Output	± 500	g pk	± 4905	m/s ²
Frequency Range, ± 5%	4 to 2000	Hz	4 to 2000	Hz
Resonant Frequency	> 31	kHz	> 31	kHz
Equivalent Electrical Noise Floor	0.0004	g rms	0.05	m/s ² rms
Linearity [2]	± 1%	%F.S	± 1%	%F.S
Transverse Sensitivity, Max.	5%		5%	
Strain Sensitivity @250µε	0.011	g/µε	0.11	m/s ² µε

ENVIRONMENTAL

Maximum Vibration
Maximum Shock
Temperature Range
Seal
Coefficient Of Thermal Sensitivity
Magnetic Sensitivity @ 100 Gauss (0,01 Tesla)

Maximum Vibration	500	±gpk	4905	± m/s ² pk
Maximum Shock	4000	±gpk	39240	± m/s ² pk
Temperature Range	-60 to +225	°F	-51 to 107	°C
Seal	Hermetic		Hermetic	
Coefficient Of Thermal Sensitivity	0.033	%/°F	0.059	%/°C
Magnetic Sensitivity @ 100 Gauss (0,01 Tesla)	0.000012	g/Gauss	1.18	m/s ² /T

ELECTRICAL

Supply Current [3]
Compliance Voltage Range
Output Impedance TYP
Bias Voltage
Discharge Time Constant
Output Signal Polarity [4]
Electrical Isolation [5]

Supply Current [3]	<6	mA	<6	mA
Compliance Voltage Range	+20 to +32	V	+20 to +32	V
Output Impedance TYP	100	Ω	100	Ω
Bias Voltage	+11 to +13	VDC	+11 to +13	VDC
Discharge Time Constant	0.1 to 1.0	sec	0.1 to 1.0	sec
Output Signal Polarity [4]	positive		positive	
Electrical Isolation [5]	10	GΩ	10	GΩ

This family also includes:

Model	Sensitivity (mV/g)	Range (Gpeak)	Resolution (Grms)	Oper. Temp(°F)	TC
3326A2	100	50	0.0001	-60 to +225	0.1 to 1.0

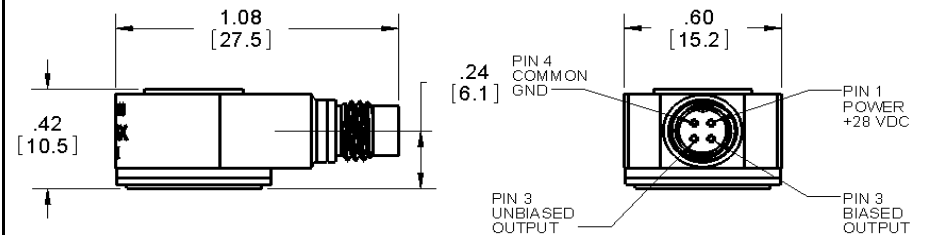
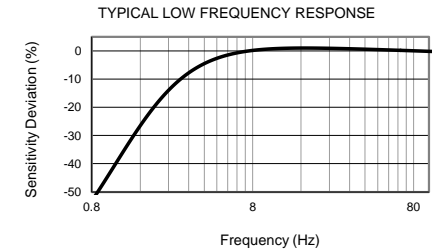
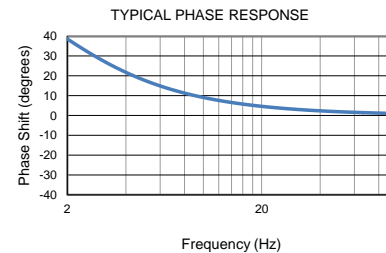
Refer to the performance specifications of the products in this family for detailed description.

Supplied Accessories

- 1) Accredited calibration certificate (ISO 17025)
- 2) Model 6247 mounting screw (6-32)

Notes:

- [1] Measured at 100 Hz, 1 grams per ISA RP 37.2.
- [2] Measured using zero-based best straight-line method, % of F.S. or any lesser range.
- [3] The sensor is operating from regular VDC power supply and has a current limiting circuit built-in
- [4] For acceleration into base
- [5] Electrical ground isolated from sensor mounting surface.
- [6] Mates with Dytran 6896AXX cable (XX- length of cable in feet)
- [7] In the interest of constant product improvement, we reserve the right to change specifications without notice.



Units on the line drawing are in inches, units in brackets are in millimeters. Refer to 127-3326A for more information.



21592 Marilla Street, Chatsworth, California 91311 Phone: 818.700.7818 Fax:818.700.7880
www.dytran.com For permission to reprint this content, please contact info@dytran.com



Presented by: Absolute Gauge Technologies
sales@absolute-gauge.com; www.absolute-gauge.com,
Toronto: 416 754 3168, Montreal: 514 695 5147, Toll Free: 1 888 754 7008