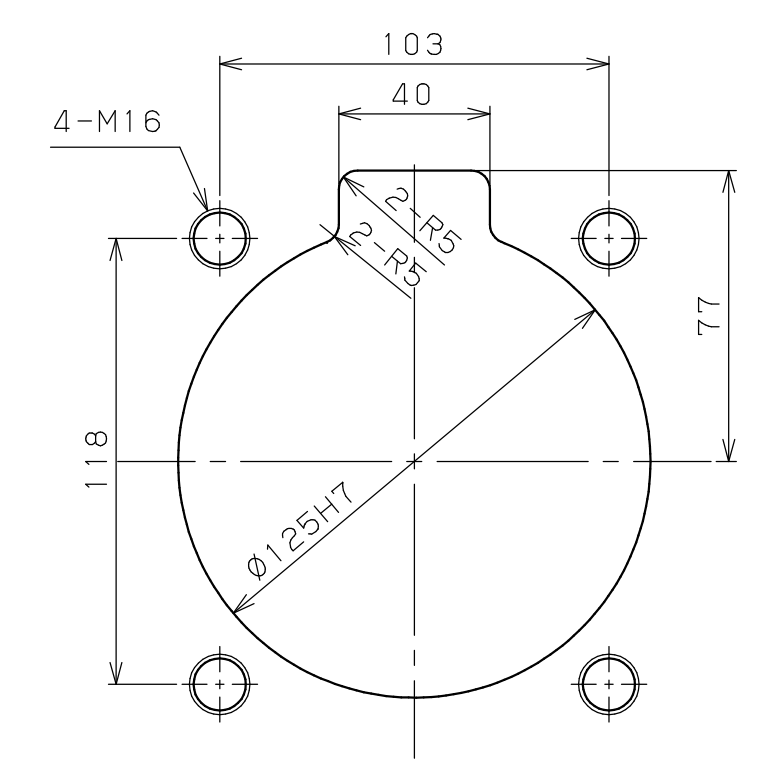
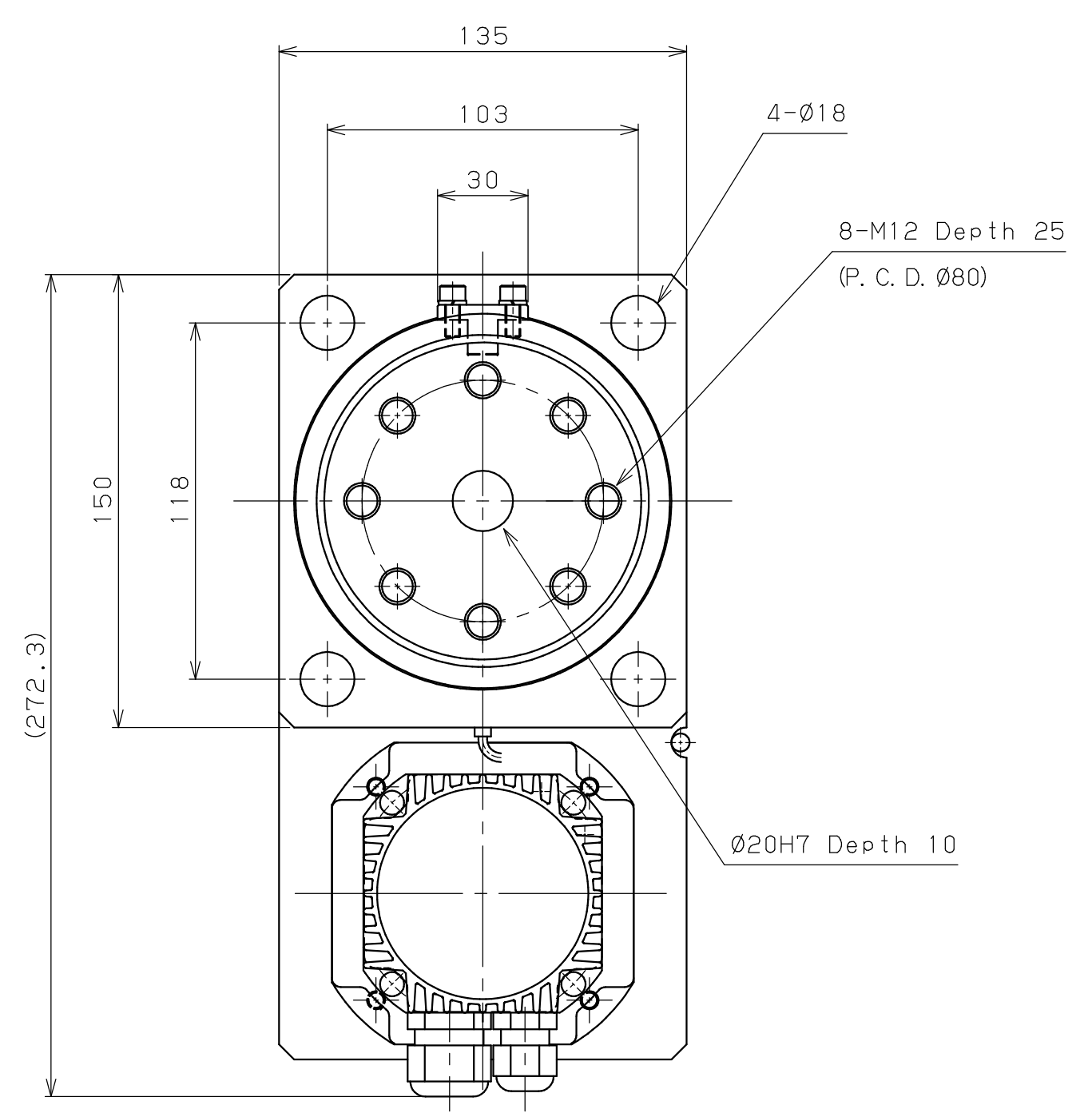
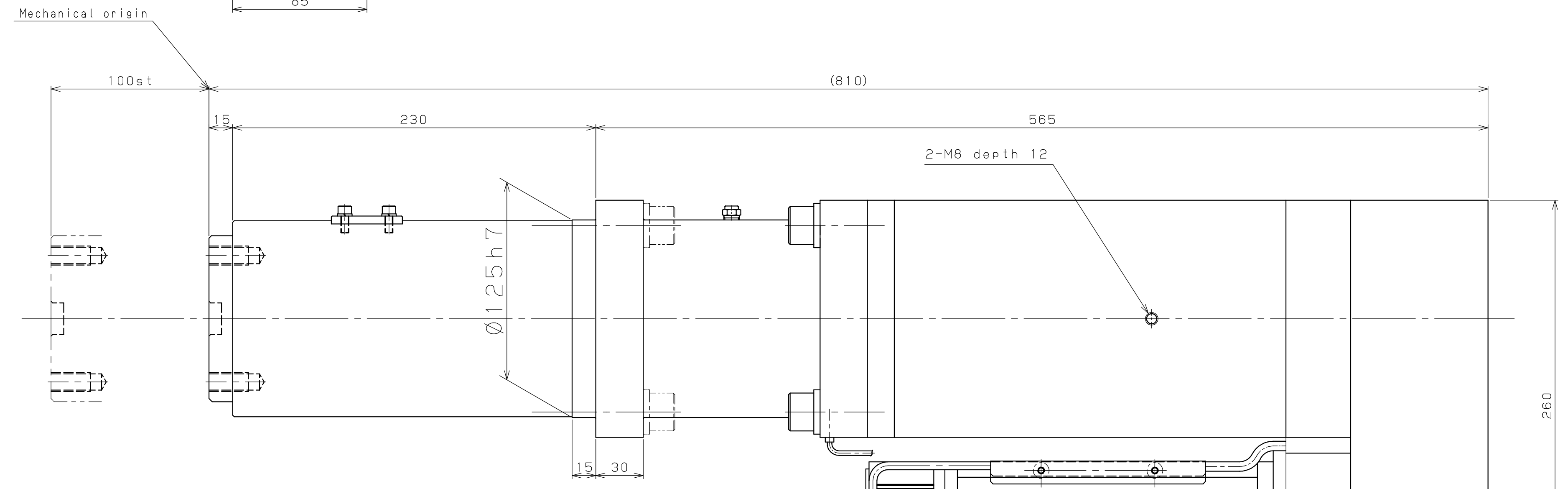
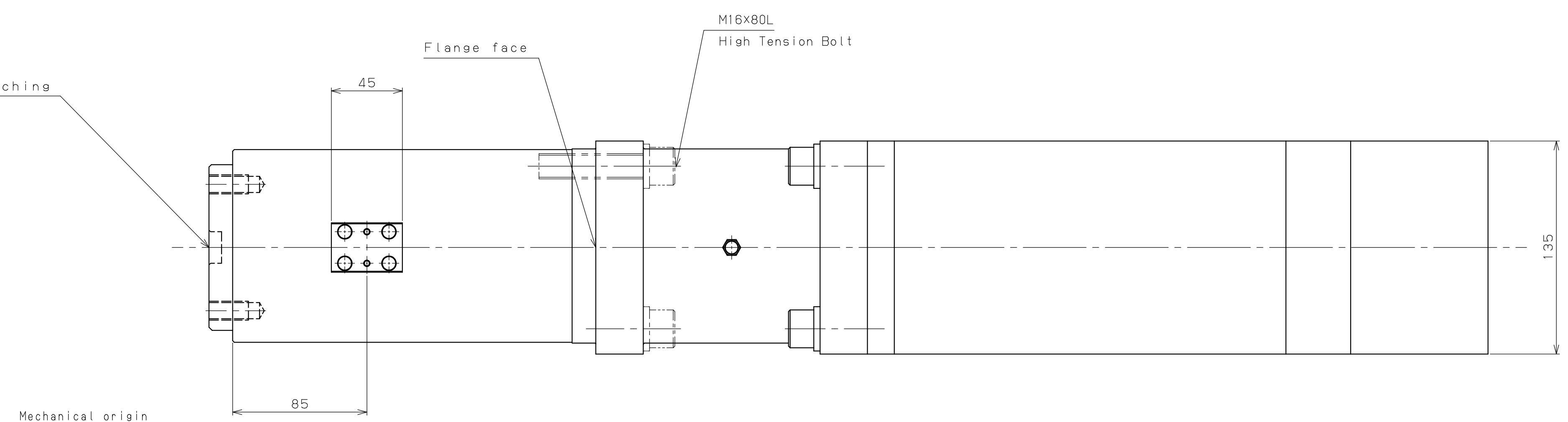


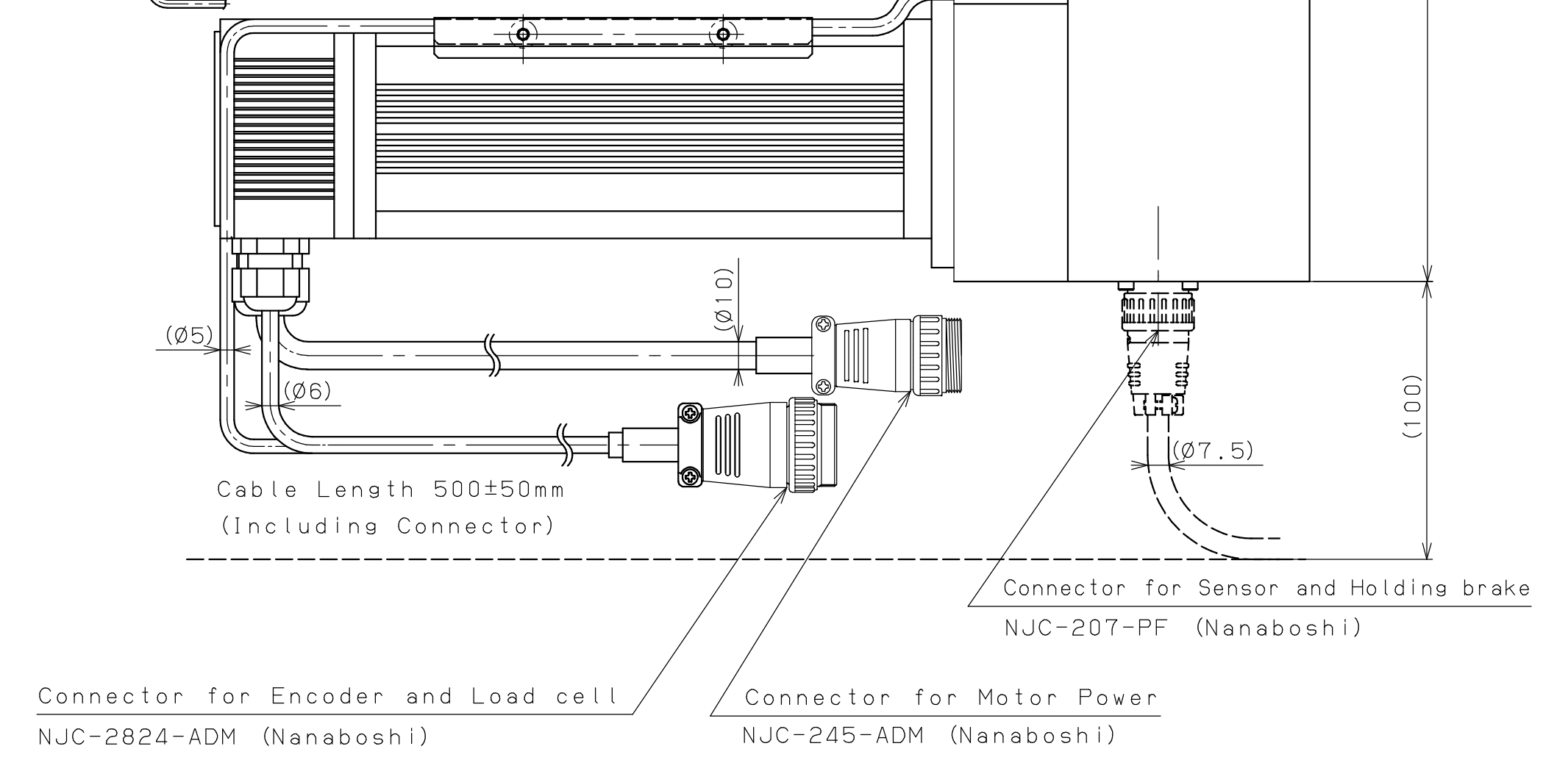
MARK	DATE	REVISION	CHA
△			
△			
△			

Around 10mm back and also 5mm forward from origin when origin searching
Pay attention when mechanical design



Mounting for CS50

- Spec.
- 1. Normal Force 40kN
 - 2. Max. Force 50kN
 - 3. Max. Stroke 100mm
 - 4. Max. Travel Speed 150mm/sec
 - 5. Max. Press Speed 30mm/sec



QTY 数量	SEAL, THTM 蓋印, 封油	納入先 USER
MATERIAL 材質	HEAT, THTM 熱処理	名称 TITLE
FINISH 仕上	HARDNESS 硬度	品名 SUB TITLE
WEIGHT 重量	CASE DEPT 機壳深さ	品名 SUB TITLE
REMARKS 備考		3-F CODE
APPD.	換図 CHK.	設計 DES.
	製図 DFT.	尺規 SCL.
		日付 DATE
		3RD. ANG. PRO. 三角法
		製圖 Dwg. No.