

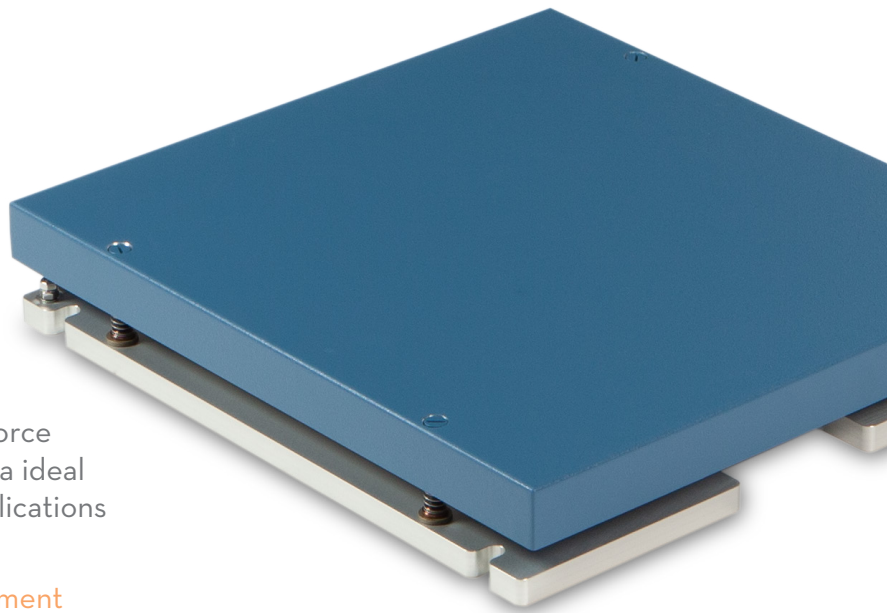
BMS600600

Force Platform

OPTIMA™ Biomechanics Measurement Series (BMS)

System Components:

Force plate, Optima external amplifier, 9m (30ft) transducer cable, and mounting kit

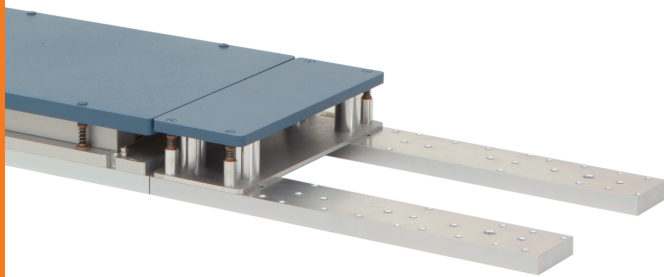


As one of AMTI's most popular and versatile force plates, the BMS600600 offers a mid-sized area ideal for human gait analysis as well as dynamic applications such as jumping, running, and cutting.

As part of our **Optima Biomechanics Measurement Series (BMS)**, this industry-leading platform offers superior accuracy and high natural frequency in a convenient size.



Features through-top mounting access



Modular Rail System (MRS) and Filler Plates enable easy reconfiguration of force plates and future lab growth

BMS600600 SPECIFICATIONS

Dimensions (W x L x H)	600 x 600 x 101.6 mm (23.6" x 23.6" x 4")
Weight	27 kg (60 lb)
Sensing Elements	Strain gauge bridge
Channels	Fx, Fy, Fz, Mx, My, Mz
Top Plate Material	Composite
Temperature Range	-17 to 52°C (0°F to 125°F)
Analog Output	6 Channels
Digital Output	USB (with OPTIMA amplifier)
Crosstalk*	±0.2% of applied load
Fx, Fy, Fz Hysteresis	< 0.5% full scale output
COP Accuracy*	< 0.5 mm (0.02 in.)
Measurement Accuracy*	±0.5% of applied load

*Typical Value: Minimum applied load 50 lb.

Site and installation requirements available upon request.

BMS600600

Force Platform

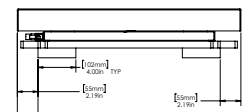
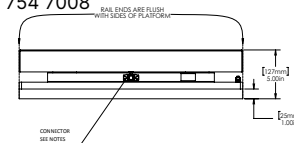
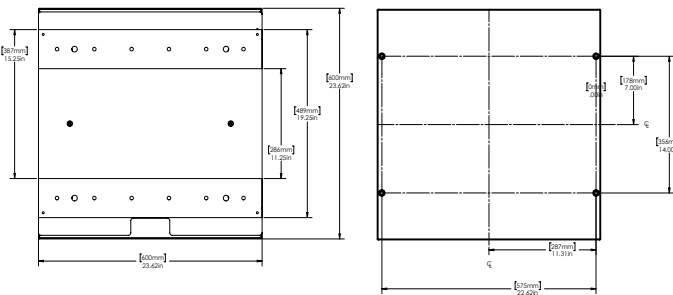
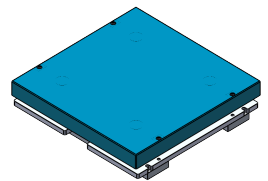
AVAILABLE MODELS			
MODEL	BMS600600-1K	BMS600600-2K	BMS600600-4K
Fz Capacity	4450 N (1000 lbs)	8900 N (2000 lbs)	17800 N (4000 lbs)
Fx, Fy Capacity	2225 N	4450 N	8900 N
Mx Capacity	1360 Nm	2710 Nm	5420 Nm
My Capacity	1360 Nm	2710 Nm	5420 Nm
Mz Capacity	680 Nm	1360 Nm	2710 Nm
Fx, Fy Sensitivity	0.67 $\mu\text{V}/\text{VN}$	0.34 $\mu\text{V}/\text{VN}$	0.17 $\mu\text{V}/\text{VN}$
Fz Sensitivity	0.17 $\mu\text{V}/\text{VN}$	0.08 $\mu\text{V}/\text{VN}$	0.04 $\mu\text{V}/\text{VN}$
Mx Sensitivity	1.42 $\mu\text{V}/\text{VNm}$	0.71 $\mu\text{V}/\text{VNm}$	0.35 $\mu\text{V}/\text{VNm}$
My Sensitivity	1.42 $\mu\text{V}/\text{VNm}$	0.71 $\mu\text{V}/\text{VNm}$	0.35 $\mu\text{V}/\text{VNm}$
Mz Sensitivity	2.66 $\mu\text{V}/\text{VNm}$	1.33 $\mu\text{V}/\text{VNm}$	0.66 $\mu\text{V}/\text{VNm}$
Fx, Fy Natural Frequency*	420 Hz	490 Hz	600 Hz
Fz Natural Frequency*	790 Hz	800 Hz	810 Hz

*Natural Frequency specifications shown for Standard Model (High Frequency Composite Top).
See Specifications & Details on website for complete English Units.



Heart of the OPTIMA system.

With its advanced features, the OPTIMA (OPT-SC) signal conditioner allows for simple setup, increased accuracy, and the option for direct digital integration.



AMTI
FORCE AND MOTION



AGT

Absolute Gauge Technologies™

Presented by: Absolute Gauge Technologies
sales@absolute-gauge.com; www.absolute-gauge.com,
Toronto: 416 754 3168, Montreal: 514 695 5147, Toll Free: 1 888 754 7008



ISO 9001:2015 certified
ISO 13485:2016 certified
ISO 17025:2017 accredited