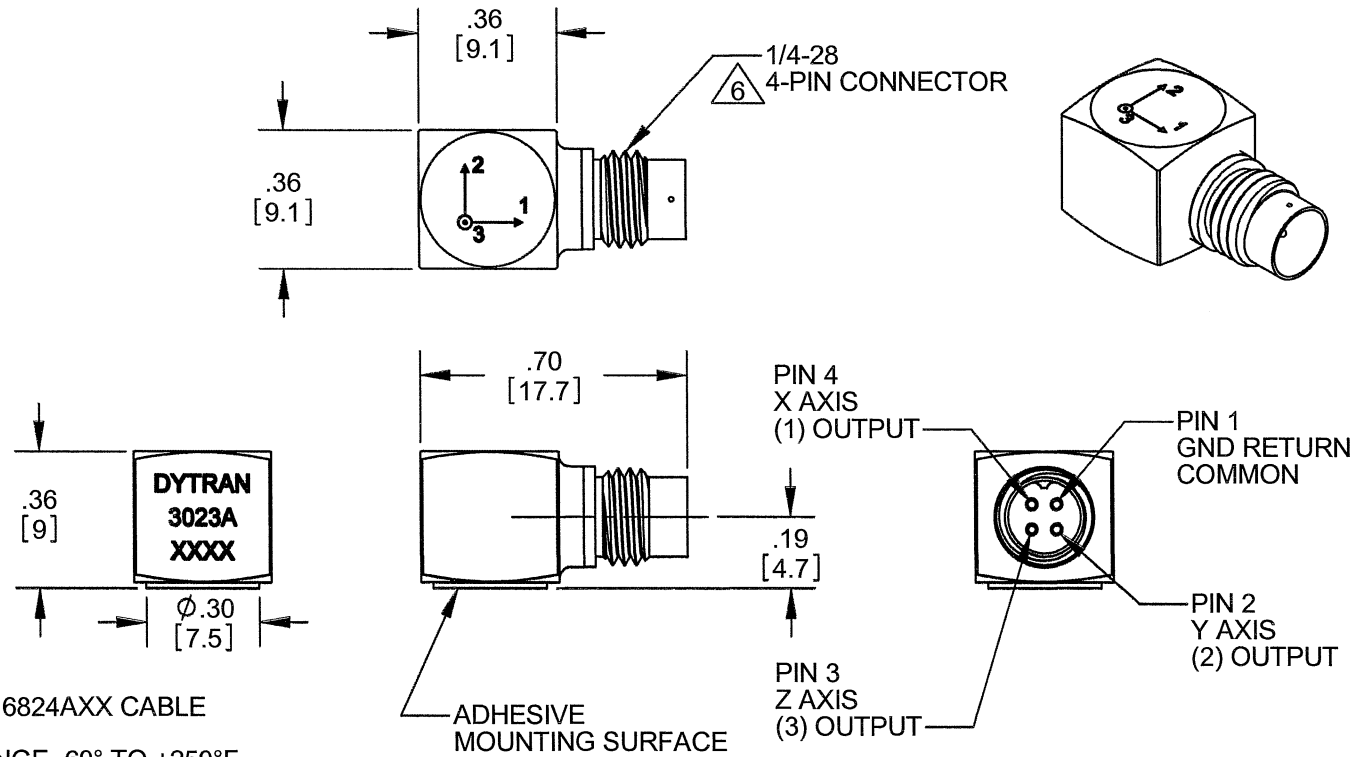


PROPRIETARY AND CONFIDENTIAL

THE INFORMATION CONTAINED IN THIS DRAWING IS THE SOLE PROPERTY OF DYTRAN INSTRUMENTS INC. ANY REPRODUCTION IN PART OR AS A WHOLE WITHOUT THE WRITTEN PERMISSION OF DYTRAN INSTRUMENTS INC. IS PROHIBITED

REVISIONS

REV.	ECN	DESCRIPTION	BY/DATE	CHK	APPR
A	6250	ADDED NOTE 5 & 6 AND REFORMATTED	RA, 11/23/09		



- 6. MATES WITH DYTRAN 6811AXX OR 6824AXX CABLE (XX=LENGTH IN FEET)
- 5. OPERATIONAL TEMPERATURE: RANGE -60° TO +250°F
- 4. SENSITIVITY: 10mV/G NOM.
- 3. WEIGHT: 3 GRAMS NOM
- 2. ARROWS INDICATE ACCELERATION DIRECTION FOR POSITIVE OUTPUT
- 1. MATERIAL: TITANIUM ALLOY

NOTES: UNLESS OTHERWISE SPECIFIED.

UNLESS OTHERWISE SPECIFIED: INTERPRET DIM & TOL PER ASME Y14.5M - 1994. REMOVE BURRS. COUNTERSINK INTERNAL THDS 90° TO MAJOR DIA. CHAM EXT THDS 45° TO MINOR DIA. THD LENGTHS AND DEPTHS ARE FOR MIN FULL THDS. THDS PER MIL-S-7742. DIMENSIONS APPLY AFTER FINISHING. ALL MACHINED SURFACES. TOTAL RUNOUT WITHIN .005. BREAK SHARP EDGES .005 TO .010. MACHINED FILLET RADII .005 TO .015. WELDING SYMBOLS PER AWS A2.4. ABBREVIATIONS PER MIL-STD-12.	
3023A	
USED ON	NEXT ASSY
APPLICATION	
THIRD ANGLE PROJECTION USA	

UNLESS OTHERWISE SPECIFIED: DIMENSIONS ARE IN INCHES. DIMENSIONS IN BRACKETS [] ARE IN MILLIMETERS TOLERANCES ARE: INCHES METRIC ANGLES .XX ± .03 X ± 0.8 ± 1° .XXX ± .010 .XX ± 0.25	
MATERIAL	
FINISH	
DO NOT SCALE DRAWING	

CONTRACT NO.	
APPROVALS	
ORIG	PML
CHK	PML
APP	NC
DATE	
05/09/03	
05/12/03	
05/12/03	

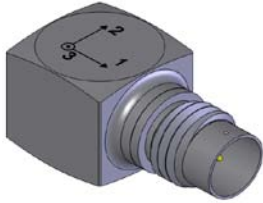
DYTRAN INSTRUMENTS, INC. **MASTER ONLY IF IN RED**

TITLE:
**OUTLINE/INSTALLATION
DRAWING, MODEL 3023A**

SIZE A	CAGE CODE 2W033	DWG. NO. 127-3023A	REV A
SCALE: 4:1		SOLIDWORKS	SHEET 1 OF 1

TRI AXIAL IEPE ACCELEROMETER

REV A, ECN-11041, 05/28/2014



- **MINATURE SIZE**
- **EXCELLENT LINEARITY**
- **ULTRA LOW WEIGHT**

PHYSICAL

Weight, Max.
Connector
Mounting Provision
Material, Housing/Connector
Sensing Element
Element Style

ENGLISH		SI	
0.11	oz	3.0	grams
4-PIN		4-PIN	
Adhesive Mount		Adhesive Mount	
Titanium Alloy		Titanium Alloy	
Quartz		Quartz	
Shear		Shear	

PERFORMANCE

Sensitivity, -10 / +15 % [1]
Range for ± 5 Volts Output
Frequency Response
Resonant Frequency
Broad Band Resolution
Spectral Noise
Linearity [2]
Maximum Transverse sensitivity
Strain Sensitivity @ 250µε

10	mV/g	1	mV/m/s ²
±500	g	±4903	m/s ²
1.5 to 4000	Hz	1.5 to 4000	Hz
±5% -5 / +15%		1.5 to 10000	Hz
> 40	kHz	> 40	kHz
0.007	Grms	0.069	m/s ² rms
0.003	µGrms/v(Hz)	0.029	µm/s ² rms/v(Hz)
10Hz	µGrms/v(Hz)	0.0098	µm/s ² rms/v(Hz)
100Hz	µGrms/v(Hz)	0.00196	µm/s ² rms/v(Hz)
1000Hz	µGrms/v(Hz)	0.00049	µm/s ² rms/v(Hz)
10000Hz	µGrms/v(Hz)	0.00039	µm/s ² rms/v(Hz)
1	% F.S.	1	% F.S.
5	%	5	%
0.039	g/µε	0.38	m/s ² /µε

ENVIRONMENTAL

Maximum Vibration
Maximum Shock
Temperature Range
Seal

±600	Gpeak	±5884	m/s ² peak
5000	Gpeak	49033	m/s ² peak
-60 to +250	°F	-51 to +121	°C
Hermetic		Hermetic	

ELECTRICAL

Supply Current Range [3]
Compliance Voltage Range
Output Impedance, Typ
Bias Voltage
Discharge Time Constant
Electrical Isolation

2 to 20	mA	2 to 20	mA
18 to 30	Volts	18 to 30	Volts
100	Ω	100	Ω
9 to 11	VDC	9 to 11	VDC
0.3 to 1.5	Sec	0.3 to 1.5	Sec
Case Grounded	GΩ,min	Case Grounded	GΩ,min

This family also includes:

Model	Sensitivity (mV/g)	Frequency Response (Hz)	Mounting	Operating Temp (°F)
3023A1	10 (-10 to +15%)	1.5 to 10000 (-5 to +15%)	5-40 Tapped Hole	-60 to +250
3023A2	10 (-10 to +15%)	1.5 to 10000 (-5 to +15%)	10-32 Tapped Hole	-60 to +250
3023A3	5 (-10 to +15%)	1.5 to 10000 (-5 to +15%)	Adhesive	-60 to +250
3023A4	5 (-10 to +15%)	1.5 to 10000 (-5 to +15%)	5-40 Tapped Hole	-60 to +250
3023A5	1 (±5%)	1.5 to 10000 (-5 to +15%)	Adhesive	-60 to +250
3023A6	5 (-10 to +15%)	1.5 to 10000 (-5 to +15%)	10-32 Tapped Hole	-60 to +250
3023A9	1 (±10%)	1.5 to 10000 (-5 to +15%)	10-32 Tapped Hole	-60 to +250

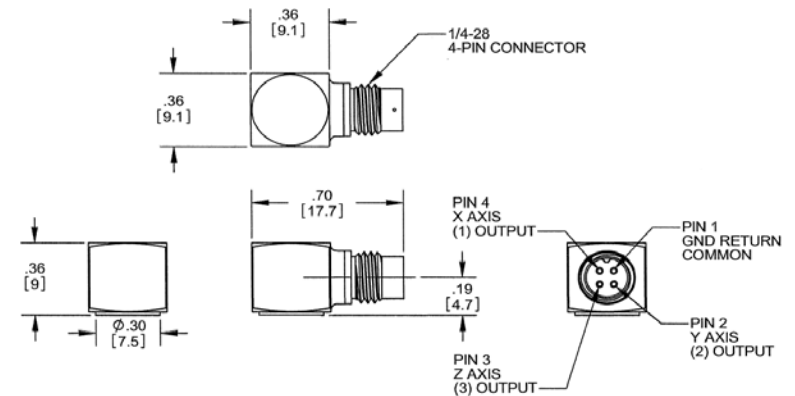
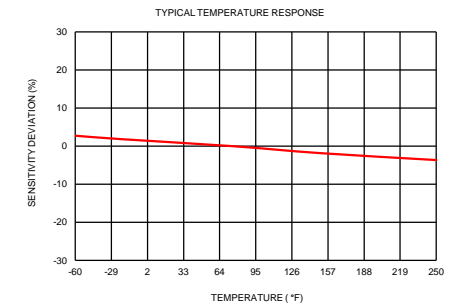
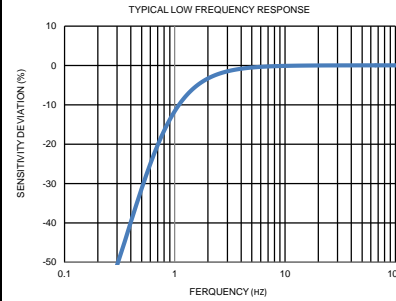
Refer to the performance specifications of the products in this family for detailed description

Supplied Accessories:

- Accredited calibration certificate (ISO 17025)

Notes:

- Measured at 100Hz, 1 Grms per ISA RP 37.2.
- Measure using zero-based straight line method, % of F.S. or any lesser range.
- Do not apply power to this system without current limiting, 20 mA MAX. To do so will destroy the IC charge amplifier.
- In the interest of constant product improvement, we reserve the right to change specifications without notice.



Units on the line drawing are in inches, units in brackets are in millimeters. Refer to 127-3023A for more information.



21592 Marilla Street, Chatsworth, California 91311 Phone: 818.700.7818 Fax: 818.700.7880 www.dytran.com
For permission to reprint this content, please contact info@dytran.com



Presented by: Absolute Gauge Technologies
sales@absolute-gauge.com; www.absolute-gauge.com,
Toronto: 416 754 3168, Montreal: 514 695 5147, Toll Free: 1 888 754 7008