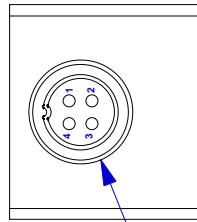
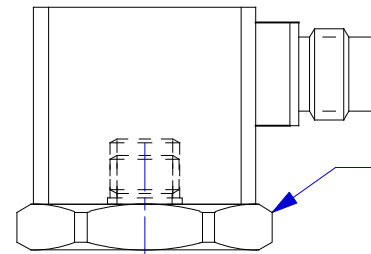
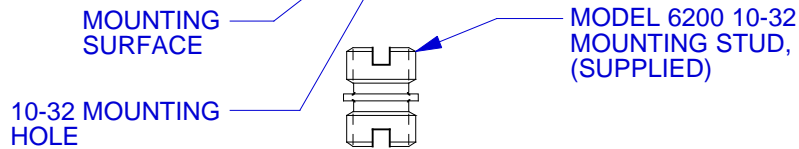
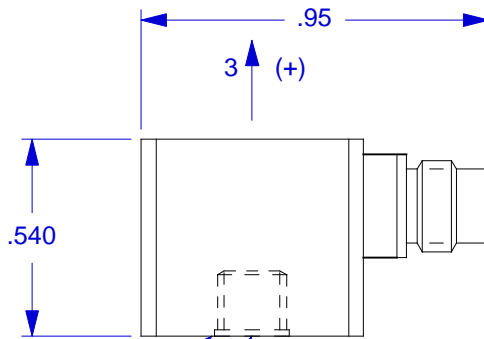


VIEW LOOKING INTO CONNECTOR

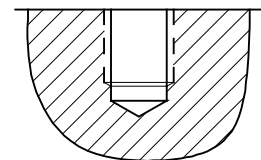
- PINOUT**
 PIN #1 SIG/PWR AXIS 1 (X)
 PIN #2 SIG/PWR AXIS 2 (Y)
 PIN #3 SIG/PWR AXIS 3 (Z)
 PIN #4 GND RETURN, COMMON



CONNECTOR MATES WITH DYTRAN CABLE 6430AXX



SUGGESTED MOUNTING METHOD:
 THREAD MODEL 6213 ADAPTOR INTO 3093A1 HOUSING. ADHESIVE MOUNT TO TEST SURFACE, (NO 10-32 PORT NEEDED)



MOUNTING PORT PREPARATION:
 SELECT SURFACE FLAT TO .001 TIR
 DRILL #21 (.159) DIA. X .250 DEEP
 BOTTOM TAP 10-32 UNF-2B X .200 MIN. DEPTH PERF. THD.

4. MOUNTING TORQUE ON HEX FLATS OF 6213 ADAPTOR: 10 TO 15 LB-INCHES. DO NOT OVERTORQUE.
3. SIGNAL POLARITY IS POSITIVE FOR ACCELERATION IN THE DIRECTION OF AXES ARROWS.
2. SIG/PWR GROUND IS ISOLATED FROM CASE, 10 MEGOHMS, MIN.
1. ENVIRONMENTSL SEAL: HERMETIC.

EXCEPT AS OTHERWISE NOTED	
ALL DIMENSIONS IN INCHES TOLERANCE: .XXX = ± .XX = ±	
SURFACE FINISH EXCEPT AS NOTED ✓	
BREAK EDGES TO DEBURR RADIUS OR CHAMFER	
△ THESE DIAS ⊙ TO T.I.R.	
FILLETS -	MAX RAD.

DYTRAN INSTRUMENTS, INC.		CHATSWORTH, CA.	
SCALE 2X	REV -	DATE -	ECN -
DATE 6/22/00	PART NO. MODEL 3093B1		
DRAWN N.C.	CHECKED R.A.	MAT'L	
APPROVED	NEXT ASSEMBLY	USED ON	3093B1
TITLE OUTLINE/INSTALLATION DRAWING, MODEL 3093B1			DWG NO. 127-3093B1
			SHEET 1 OF 1

SPECIFICATIONS, MODEL 3093B1 TRIAXIAL ACCELEROMETER

SPECIFICATIONS	VALUE	UNITS
----------------	-------	-------

PHYSICAL

WEIGHT	13.5	GRAMS
SIZE (HEIGHT x WIDTH x DEPTH)	0.54 x .59 x .59	INCHES
MOUNTING (TAPPED HOLE IN BASE)	10-32 STUD MOUNT	
CONNECTOR [1]	4-PIN [3]	
MATERIAL, HOUSING/CONNECTOR	TITANIUM ALLOY	

PERFORMANCE

SENSITIVITY, +15 -10% [2]	100	mV/G
RANGE, F.S. (each axis)	+/- 50	G
FREQUENCY RESPONSE, +/- 10%	2 to 5000	Hz
ELEMENT NATURAL FREQUENCY	>30	kHz
EQUIVALENT ELECTRICAL NOISE	.0007	G, RMS
LINEARITY [3]	1	%F.S.
TRANSVERSE SENSITIVITY, MAX., SIGNAL POLARITY	6	%

POSITIVE FOR MOTION IN DIRECTION OF ARROWS ETCHED ON HOUSING

ENVIRONMENTAL

MAXIMUM VIBRATION	+/- 100	G
MAXIMUM SHOCK	3000	G
TEMPERATURE RANGE	-60 to +225	°F
ENVIRONMENTAL SEAL	HERMETIC	
COEFFICIENT OF THERMAL SENSITIVITY	.03	%/°F

ELECTRICAL

SUPPLY CURRENT RANGE, (each axis) [4]	2-to 20	mA
COMPLIANCE (SUPPLY) VOLTAGE RANGE (each axis)	+18 to +30	VDC
OUTPUT IMPEDANCE, TYP.	100	OHMS
OUTPUT BIAS VOLTAGE	+11 to + 13	VDC
DISCHARGE TIME CONSTANT	0.5 to 1.5	SEC
GROUND ISOLATION [5]	10, MIN.	MEGOHMS

NOTES:

- [1] Connector mates with Dytran cable assy. Model 6430AXX. (XX = length in feet)
- [2] Reference sensitivity measured at 100 Hz, 1 G RMS per ISA RP 37.2
- [3] Linearity is % of specified full scale (or any lesser full-scale range), zero-based best-fit straight-line method.
- [4] Power only with Dytran LIVM power unit or other Dytran-compatible constant current type power unit. If power is applied without current limiting protection, the internal amplifier will be immediately destroyed.
- [5] Case ground isolation is achieved by internal means.



Presented by: Absolute Gauge Technologies
 sales@absolutegauge.com; www.absolutegauge.com,
 Toronto: 416 754 3168, Montreal: 514 695 5147, Toll Free: 1 888 754 7008