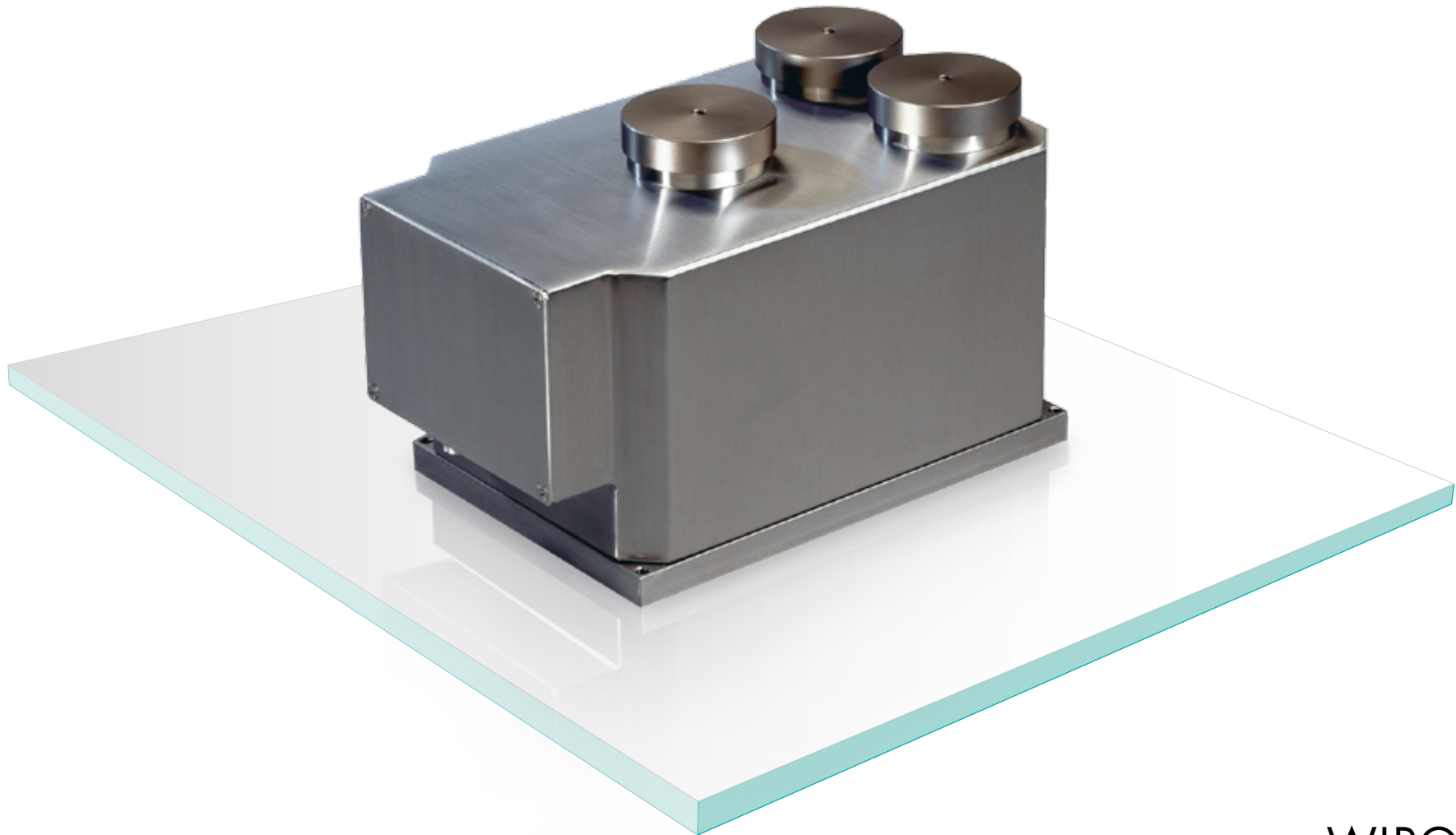


EC-FS

HIGH PRECISION WEIGH CELL

PRODUCT INFORMATION



### DESCRIPTIONS

The series EC-FS Weigh Cells cover the weighing range up to 15 kg. They have been specifically designed as compact sensor components, meaning they are especially suited for installation into checkweighers, price labelling and Lift-up systems, filling and packaging machines, parcel and letter sorting systems. The large additive dead load range favours the mounting of conveyor belts or weighing platforms without limiting the weighing range.

The Weigh Cell comes standard equipped to supply final weighing values via a CAN interface as ready to connect modular components. The integrated software filters can be configured multifunctional, enabling optimal adaptation of the weighing system to the respective ambient conditions. The Weigh Cells extensive command set facilitates simplified control engineering integration. Complemented by a variety of options, the Weigh Cell can also fulfill very specific requirements.

### FEATURES

- ▲ Weighing range up to 15 kg, covered by 5 models
- ▲ Additive dead load range up to 15 kg
- ▲ Stainless steel housing
- ▲ Protection class up to IP 65
- ▲ Binary I/O channels with customer-specific functions
- ▲ Interface 1: CAN
- ▲ Interface 2: RS 232 for service and configuration
- ▲ Sampling rate 1 ms

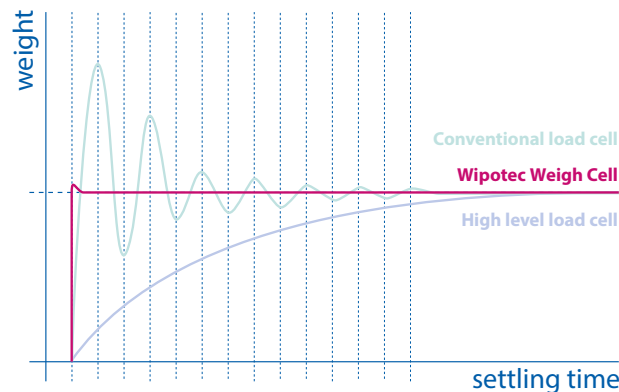
### TO BE USED IN

- ▲ Filling and packaging machines
- ▲ Lift-up systems (for cup filling machines, convenience food filling machines, etc.)
- ▲ Checkweighers (for different branches like food, pharmaceuticals, chemical and cosmetics)
- ▲ Parcel and letter sorting systems

### OPTIONS

- ▲ **Option 02:** Forceless connection of electrical aggregates
- ▲ **Option 10:** RS 422 instead of CAN interface
- ▲ **Option 11:** Bus operation
- ▲ **Option 12:** Higher display resolution
- ▲ **Option 13:** Binary I/O channels (4-fold)
- ▲ **Option 14:** Filling algorithm
- ▲ **Option 25:** Dead load compensation

With the optional CFI (CAN Fieldbus Interface) it is possible to connect to a variety of industrial fieldbus systems. Please see specifications on our [website](#).



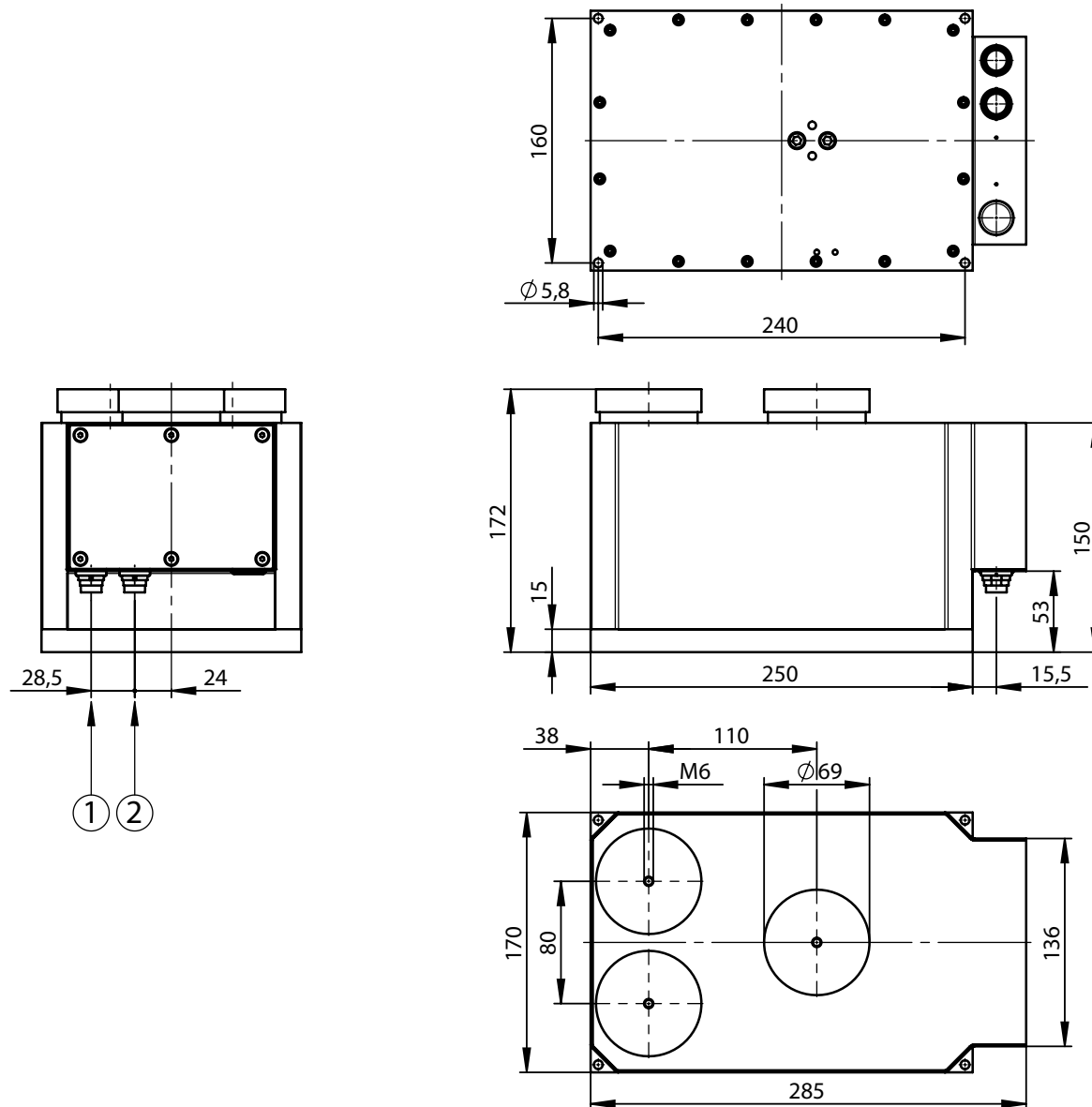
Weigh Cell type	EC 2000-2-FS	EC 3000-3-FS	EC 4000-3-FS	EC 4000-2-FS	EC 4000-1-FS
Weighing range	750 g	1,500 g	3,750 g	7,500 g	15,000 g
Electrical adjustable dead load range	4,000 g	8,500 g	15,000 g	15,000 g	15,000 g
Verification scale interval(e)	0.1 g	0.2 g	0.5 g	1 g	2 g
Display value (d)	0.05 g	0.1 g	0.2 g	0.5 g	1 g
<sup>3)</sup> Display value (d) with higher resolution (Option)	0.01 g	0.02 g	0.05 g	0.1 g	0.2 g
Linearity ≤	± 0.02 g	± 0.04 g	± 0.1 g	± 0.2 g	± 0.4 g
<sup>1)</sup> Repeatability (S) ≤	0.01 g	0.02 g	0.05 g	0.1 g	0.2 g
Maximum dimension of weighing platform	300 x 200 mm	500 x 300 mm	600 x 400 mm		
<sup>1)2)</sup> Settling time (on 1‰ of final value)	< 100 ms	< 120 ms	< 200 ms		
Protection class of the Weigh Cell	IP 44	IP 65	IP 65		
Temperature range	+5 °C to +40 °C				
Power supply	24 V DC, ± 5 %, 0.5 A				
Weight	approx. 10,000 g				
Interface 1	CAN, RS 422				
Interface 2	RS 232				
Housing material	Stainless steel AISI 304				

1) Depends on the preference settings and on setup and ambient conditions of the system | The absolute repeatability is +/- 3 s

2) Weighing time = settling time plus (adjustable) measuring time

3) Temperature range: +10 °C to +30 °C

Customer specific variations on request



All measurements in mm

Subject to technical modifications

2015-04-EN-EC-FS

### Headquarters

Wipotec GmbH  
 Adam-Hoffmann-Str. 26  
 67657 Kaiserslautern, Germany  
 T +49.631.34146-0  
 F +49.631.34146-8690  
 info@wipotec.com  
 www.wipotec.com

### Italy

Wipotec Italia s.r.l.  
 Via Antonio Gramsci, 18  
 20016 Pero (MI), Italy  
 T +39.02.73952424  
 F +39.02.45508075  
 info@wipotec.it  
 www.wipotec.it

### USA

Wipotec North America  
 700 Old Roswell Lakes Parkway,  
 Suite 200  
 Roswell, Georgia 30076, USA  
 T +1.770.971.5414  
 F +1.770.509.5524  
 info.usa@wipotec.com  
 www.wipotec.com