

MV-CA013-A0GMC

1.3 MP 1/2" CMOS GigE Area Scan Camera



GEN*i*CAM

GIG*E* VISION

Introduction

With GigE interface, MV-CA013-A0GMC camera adopts CMOS sensor to provide high-quality images and transmit images in real time, and its max. frame rate can reach 92.8 fps in full resolution.

Key Feature

- Supports auto or manual adjustment of gain and exposure time, manual adjustment of LUT and Gamma correction, etc.
- Supports hardware trigger, software trigger and free run, etc.
- Adopts GigE interface and max. transmission distance of 100 meters without relay.
- Compatible with GigE Vision V2.0 Protocol, GenICam Standard, and third-party software based on the protocol and standard.

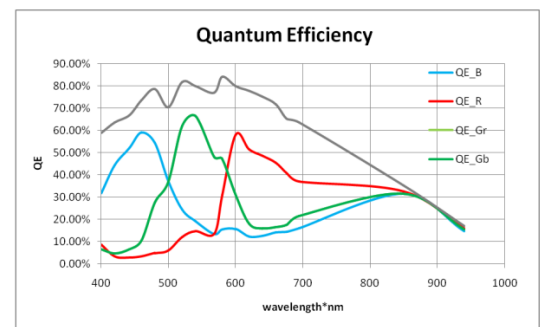
Available Model

- Mono camera: MV-CA013-A0GM
- Color camera: MV-CA013-A0GC

Applicable Industry

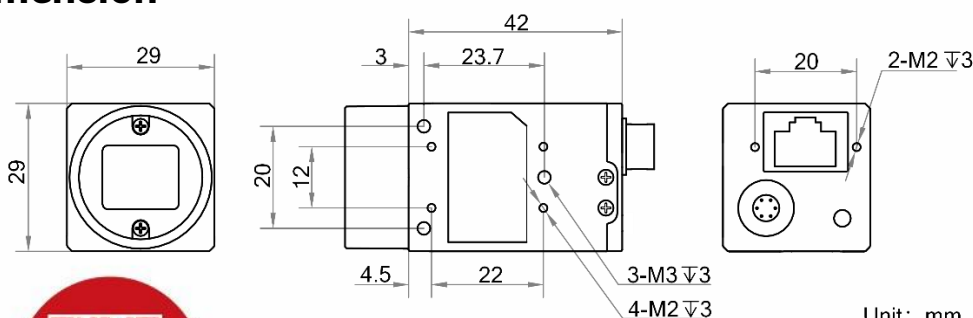
SMT/ PCB AOI, consumer electronics, electrical semiconductor, etc.

Sensor Quantum Efficiency



MV-CA013-A0GMC

Dimension



Unit: mm



Specification

Model	MV-CA013-A0GM	MV-CA013-A0GC
Camera		
Sensor type	CMOS, global shutter	
Pixel size	4.8 μ m	
Sensor size	1/2"	
Resolution	1280 \times 1024	
Max. frame rate	92.8 fps @1280 \times 1024	
Dynamic range	54 dB	
SNR	40.6 dB	
Gain	0 dB to 16 dB	
Exposure time	9 μ s to 10 sec	
Exposure mode	Off/Once/Continuous exposure mode	
Mono/color	Mono	Color
Pixel format	Mono 8/10/10p/12/12p	Mono 8/10/12, Bayer RG 8/10/10p/12/12p, YUV 422 (YUYV) Packed, YUV 422 Packed, RGB 8, BGR 8
Binning	Supports 1 \times 1, 2 \times 2, 4 \times 4	
Decimation	Supports 1 \times 1, 2 \times 2, 4 \times 4	
Reverse image	Supports horizontal and vertical reverse image output	
Electrical features		
Data interface	Gigabit Ethernet, compatible with Fast Ethernet	
Digital I/O	6-pin Hirose connector provides power and I/O, including opto-isolated input \times 1 (Line 0), opto-isolated output \times 1 (Line 1), bi-directional non-isolated I/O \times 1 (Line 2).	
Power supply	9 VDC to 24 VDC, supports PoE	
Power consumption	Typ. 2.3 W@12 VDC	Typ. 2.7 W@12 VDC
Mechanical		
Lens mount	C-Mount	
Dimension	29 mm \times 29 mm \times 42 mm (1.1" \times 1.1" \times 1.2")	
Weight	Approx. 100 g (0.22 lb.)	
Ingress protection	IP30	
Temperature	Working temperature: 0 $^{\circ}$ C to 50 $^{\circ}$ C (32 $^{\circ}$ F to 122 $^{\circ}$ F) Storage temperature: -30 $^{\circ}$ C to 70 $^{\circ}$ C (-22 $^{\circ}$ F to 158 $^{\circ}$ F)	
Humidity	20% to 95% RH, non-condensing	
General		
Client software	MVS or third-party software meeting with GigE Vision Protocol	
Operating system	32/64-bit Windows XP/7/10, 32/64-bit Linux and 64-bit MacOS	
Compatibility	GigE Vision V2.0, GenICam	
Certification	CE, RoHS, KC	



Hangzhou Hikrobot Co., Ltd.
 en.hikrobotics.com