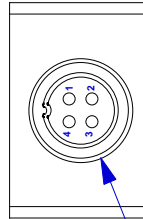
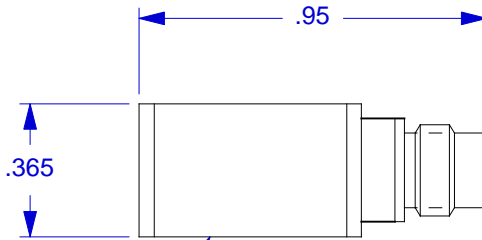


VIEW LOOKING INTO CONNECTOR

PINOUT
 PIN #1 SIG/PWR AXIS 1 (X)
 PIN #2 SIG/PWR AXIS 2 (Y)
 PIN #3 SIG/PWR AXIS 3 (Z)
 PIN #4 GND RETURN, COMMON



CONNECTOR MATES WITH
DYTRAN CABLE 6430AXX



MOUNTING SURFACE

- 4. MATERIAL, HOUSING AND CONNECTOR SHELL: TITANIUM ALLOY.
- 3. WEIGHT: 10 GMS.
- 2. SIG/PWR GROUND IS ISOLATED FROM CASE, 10 MEGOHMS, MIN.
- 1. ENVIRONMENTAL SEAL: HERMETIC.

EXCEPT AS OTHERWISE NOTED

ALL DIMENSIONS IN INCHES
 TOLERANCE: .XXX = ± .005 .XX = ± .01

SURFACE FINISH EXCEPT AS NOTED **63** ✓

BREAK EDGES TO DEBURR RADIUS OR CHAMFER .005 MAX

1 THESE DIAS ⊕ TO .002 T.I.R.

FILLETS - .003 MAX RAD.

DYTRAN INSTRUMENTS, INC.		CHATSWORTH, CA.	
SCALE 2X	REV -	DATE -	ECN -
DATE 8/11/00	PART NO. MODEL 3093B		
DRAWN N.C.	CHECKED R.A.	MAT'L	
APPROVED	NEXT ASSEMBLY	USED ON	3093B
TITLE OUTLINE/INSTALLATION DRAWING, MODEL 3093B			DWG NO. 127-3093B
SHEET 1 OF 1			



SPECIFICATIONS, MODEL 3093B TRIAXIAL ACCELEROMETER

SPECIFICATIONS	VALUE	UNITS
PHYSICAL		
WEIGHT	9.5	GRAMS
SIZE (HEIGHT x WIDTH x DEPTH)	0.37 x .59 x .59	INCHES
MOUNTING	ADHESIVE MOUNT	
CONNECTOR [1]	4-PIN [3]	
MATERIAL, HOUSING/CONNECTOR	TITANIUM ALLOY	
PERFORMANCE		
SENSITIVITY, +15 -10% [2]	100	mV/G
RANGE, F.S. (each axis)	± 50	G
FREQUENCY RESPONSE, ± 10 %	.6 to 5000	Hz
ELEMENT NATURAL FREQUENCY	>30	kHz
EQUIVALENT ELECTRICAL NOISE	.0007	G, RMS
LINEARITY [3]	1	%F.S.
TRANSVERSE SENSITIVITY, MAX.,	5	%
SIGNAL POLARITY	POSITIVE FOR MOTION IN DIRECTION OF ARROWS ETCHED ON HOUSING	
ENVIRONMENTAL		
MAXIMUM VIBRATION	± 100	G
MAXIMUM SHOCK	500	G
TEMPERATURE RANGE	-60 to +225	°F
ENVIRONMENTAL SEAL	HERMETIC	
COEFFICIENT OF THERMAL SENSITIVITY	.03	%/°F
ELECTRICAL		
SUPPLY CURRENT RANGE, (each axis) [4]	2 to 20	mA
COMPLIANCE (SUPPLY) VOLTAGE RANGE (each axis)	+18 to +30	VDC
OUTPUT IMPEDANCE, TYP.	100	OHMS
OUTPUT BIAS VOLTAGE	+11 to +13	VDC
DISCHARGE TIME CONSTANT	0.5 to 1.5	SEC
GROUND ISOLATION [5]	10, MIN.	MEGOHMS

NOTES:

- [1] Connector mates with Dytran cable assy. Model 6430AXX. (XX = length in feet)
- [2] Reference sensitivity measured at 100 Hz, 1 G RMS per ISA RP 37.2
- [3] Linearity is % of specified full scale (or any lesser full-scale range), zero-based best fit straight-line method.
- [4] Power only with Dytran LIVM power unit or other Dytran-compatible constant current type power unit. If power is applied without current limiting protection, the internal amplifier will be immediately destroyed.
- [5] Case ground isolation is achieved by internal means.



Presented by: Absolute Gauge Technologies
 sales@absolutegauge.com; www.absolutegauge.com,
 Toronto: 416 754 3168, Montreal: 514 695 5147, Toll Free: 1 888 754 7008