

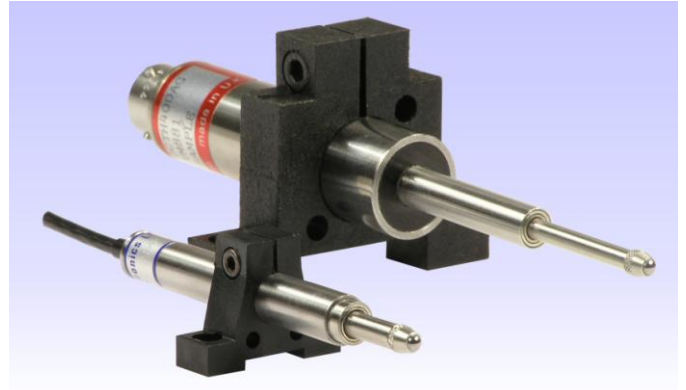


DISPLACEMENT

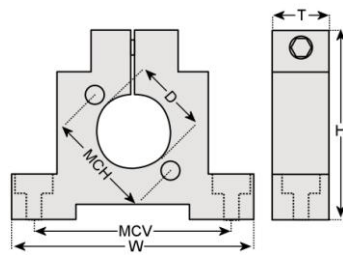
Mounting Block

Our mounting block offers a means of supporting our transducers. We suggest that at least 2 are used per transducer and for longer stroke units 3 or 4.

For very high accuracy or physically demanding applications, you may wish to use metal mounting blocks.



MB01

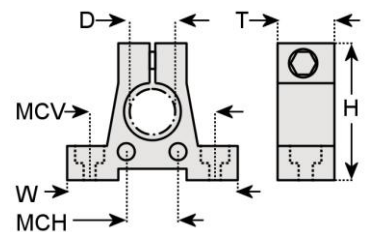


D	0.811"
W	2.5"
H	2.0"
T	0.5"
MCV	2.0"
MCH	1.2"

Major construction material
Operating temperature range

Glass filled nylon
-4°F to 230°F (392°F For short periods)

MB02



D	0.4" or 0.3"
W	1.2"
H	0.9"
T	0.4"
MCV	0.9"
MCH	0.4"

Major construction material
Operating temperature range

Glass filled nylon
-4°F to 230°F (392°F For short periods)

All dimensions and specifications are nominal.

Due to our policy of on-going development, specifications may change without notice. Any modification may affect some or all of the specifications for our equipment.

RDP Electrosense
2216 Pottstown Pike
Pottstown, PA 19465
USA
Tel: 610-469-0850
Tel: 800-334-5838
Fax: 610-469-0852
Email: info@rdpe.com