

BMS6001200

Force Platform

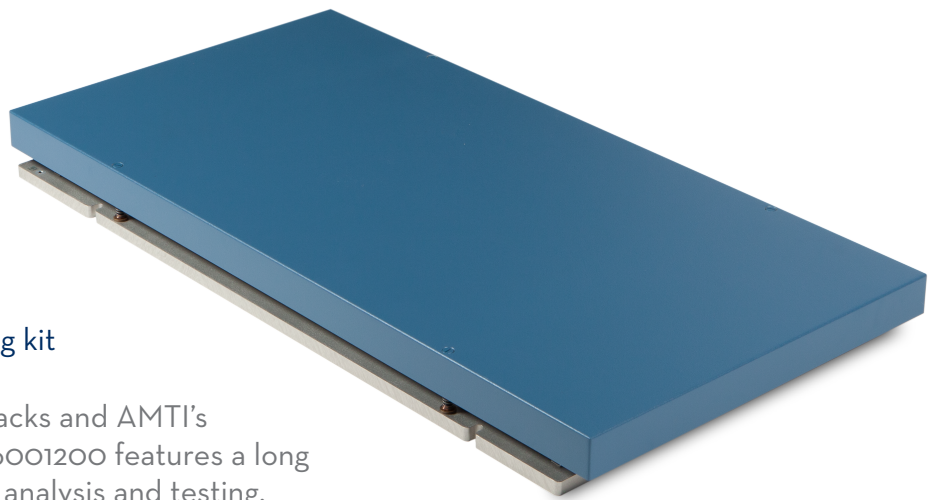
OPTIMA™ Biomechanics Measurement Series (BMS)

System Components:

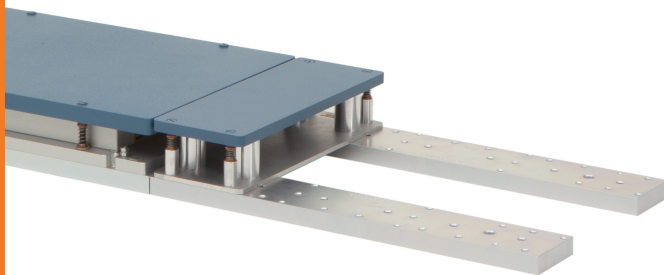
Force plate, Optima external amplifier, 9m (30ft) transducer cable, and mounting kit

Popularized through its use in running tracks and AMTI's **Instrumented Pitching Mound**, the BMS6001200 features a long target area ideal for sports performance analysis and testing.

Designed for athletic activities spanning longer distances, this mounted force platform has been installed in pitching mounds, running tracks, long jump pits, and more. With AMTI's advanced **Optima Technology**, the BMS6001200 delivers exceptional accuracy and repeatability across its entire surface.



Features through-top mounting access



Modular Rail System (MRS) and Filler Plates enable easy reconfiguration of force plates and future lab growth

BMS6001200 SPECIFICATIONS

Dimensions (W x L x H)	600 x 1200 x 101.6 mm (23.6" x 47.2" x 4")
Weight	39 kg (85 lb)
Sensing Elements	Strain gauge bridge
Channels	Fx, Fy, Fz, Mx, My, Mz
Top Plate Material	Composite
Temperature Range	-17 to 52°C (0°F to 125°F)
Analog Output	6 Channels
Digital Output	USB (with OPTIMA amplifier)
Crosstalk*	±0.2% of applied load
Fx, Fy, Fz Hysteresis	< 0.5% full scale output
COP Accuracy*	< 0.5 mm (0.02 in.)
Measurement Accuracy*	±0.5% of applied load

*Typical Value: Minimum applied load 50 lb.
Site and installation requirements available upon request.



The only force platform systems that conform to the ASTM F3109-23 technological standard for performance verification of multi-axis force plates.



Absolute Gauge Technologies

Presented by: Absolute Gauge Technologies
sales@absolute-gauge.com; www.absolute-gauge.com,
Toronto: 416 754 3168, Montreal: 514 695 5147, Toll Free: 1 888 754 7008

BMS6001200

Force Platform

AVAILABLE MODELS			
MODEL	BMS6001200-1K	BMS6001200-2K	BMS6001200-4K
Fz Capacity	4450 N (1000 lbs)	8900 N (2000 lbs)	17800 N (4000 lbs)
Fx, Fy Capacity	2225 N	4450 N	8900 N
Mx Capacity	2710 Nm	5420 Nm	10850 Nm
My Capacity	1360 Nm	2710 Nm	5420 Nm
Mz Capacity	1020 Nm	2030 Nm	4070 Nm
Fx, Fy Sensitivity	0.67 $\mu\text{V}/\text{VN}$	0.34 $\mu\text{V}/\text{VN}$	0.17 $\mu\text{V}/\text{VN}$
Fz Sensitivity	0.17 $\mu\text{V}/\text{VN}$	0.08 $\mu\text{V}/\text{VN}$	0.04 $\mu\text{V}/\text{VN}$
Mx Sensitivity	0.78 $\mu\text{V}/\text{VNm}$	0.39 $\mu\text{V}/\text{VNm}$	0.19 $\mu\text{V}/\text{VNm}$
My Sensitivity	1.15 $\mu\text{V}/\text{VNm}$	0.58 $\mu\text{V}/\text{VNm}$	0.29 $\mu\text{V}/\text{VNm}$
Mz Sensitivity	1.66 $\mu\text{V}/\text{VNm}$	0.83 $\mu\text{V}/\text{VNm}$	0.42 $\mu\text{V}/\text{VNm}$
Fx, Fy Natural Frequency*	310 Hz	360 Hz	460 Hz
Fz Natural Frequency*	260 Hz	270 Hz	280 Hz

*Natural Frequency specifications shown for Standard Model (High Frequency Composite Top).
See Specifications & Details on website for complete English Units.



Heart of the OPTIMA system.

With its advanced features, the OPTIMA (OPT-SC) signal conditioner allows for simple setup, increased accuracy, and the option for direct digital integration.

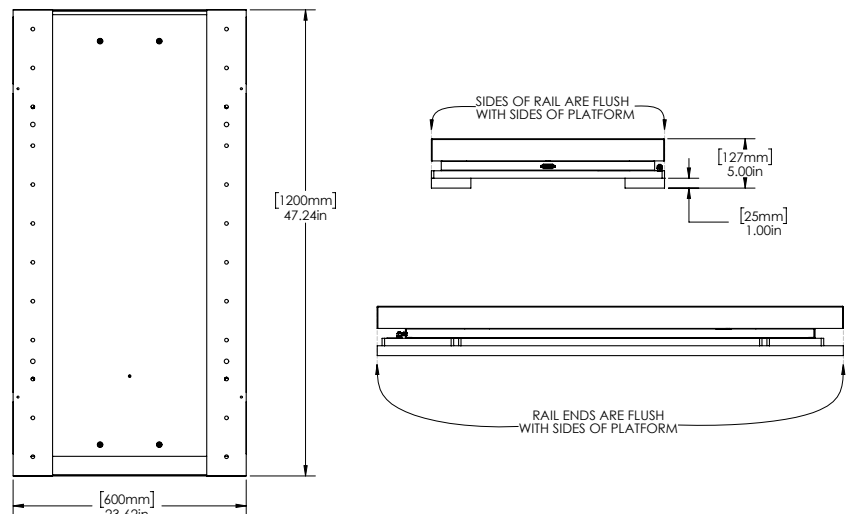
AMTI
FORCE AND MOTION

AGT Absolute Gauge Technologies™



ISO 9001:2015 certified
ISO 13485:2016 certified
ISO 17025:2017 accredited

©2025 Specifications subject to change without notice.
OPTIMA BMS/HPS SPEC SHEETS Rev 1



Presented by: Absolute Gauge Technologies
sales@absolute-gauge.com; www.absolute-gauge.com,
Toronto: 416 754 3168, Montreal: 514 695 5147, Toll Free: 1 888 754 7008