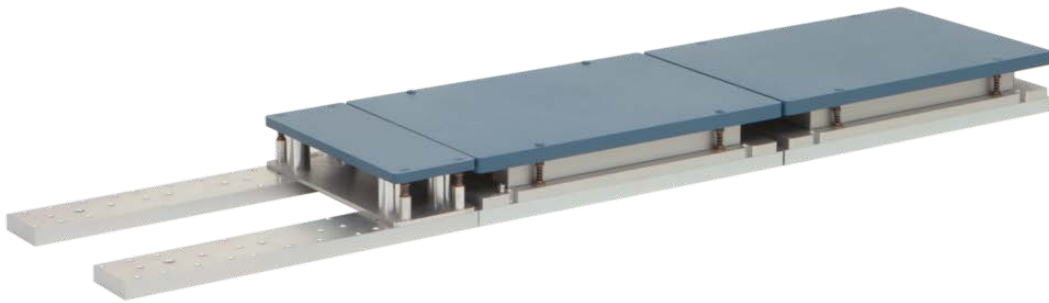


Modular Rail System (MRS)

Each AMTI Optima mountable force platform is shipped with a pair of Aluminum mounting rails, as part of our Modular Rail System (MRS). This method of mounting is unique in that multiple sets of modular mounting rails can be installed end-to-end to create rail systems. The force platforms can then be moved in quarter-, half-, or full-plate increments along the length of a rail system, with the help of our filler plates.



Flexibility in configurations

- Easily reconfigure your force plates to best suit the study at hand
- Accommodate for varying stride lengths
- Various applications

Filler plates

- Quarter-, half-, and full-sized filler plates available for each size of force plate
- Look and feel exactly like the force plates
- No measurement capacity

Future lab growth

Can't purchase all of the force plates that you need upfront? No problem.

Our Modular Rail System (MRS) and Filler Plates also allow for future lab growth. By purchasing and installing additional mounting rails and filler plates initially, you can easily swap out a filler plate for a force plate in the future as your need or budget opens up.