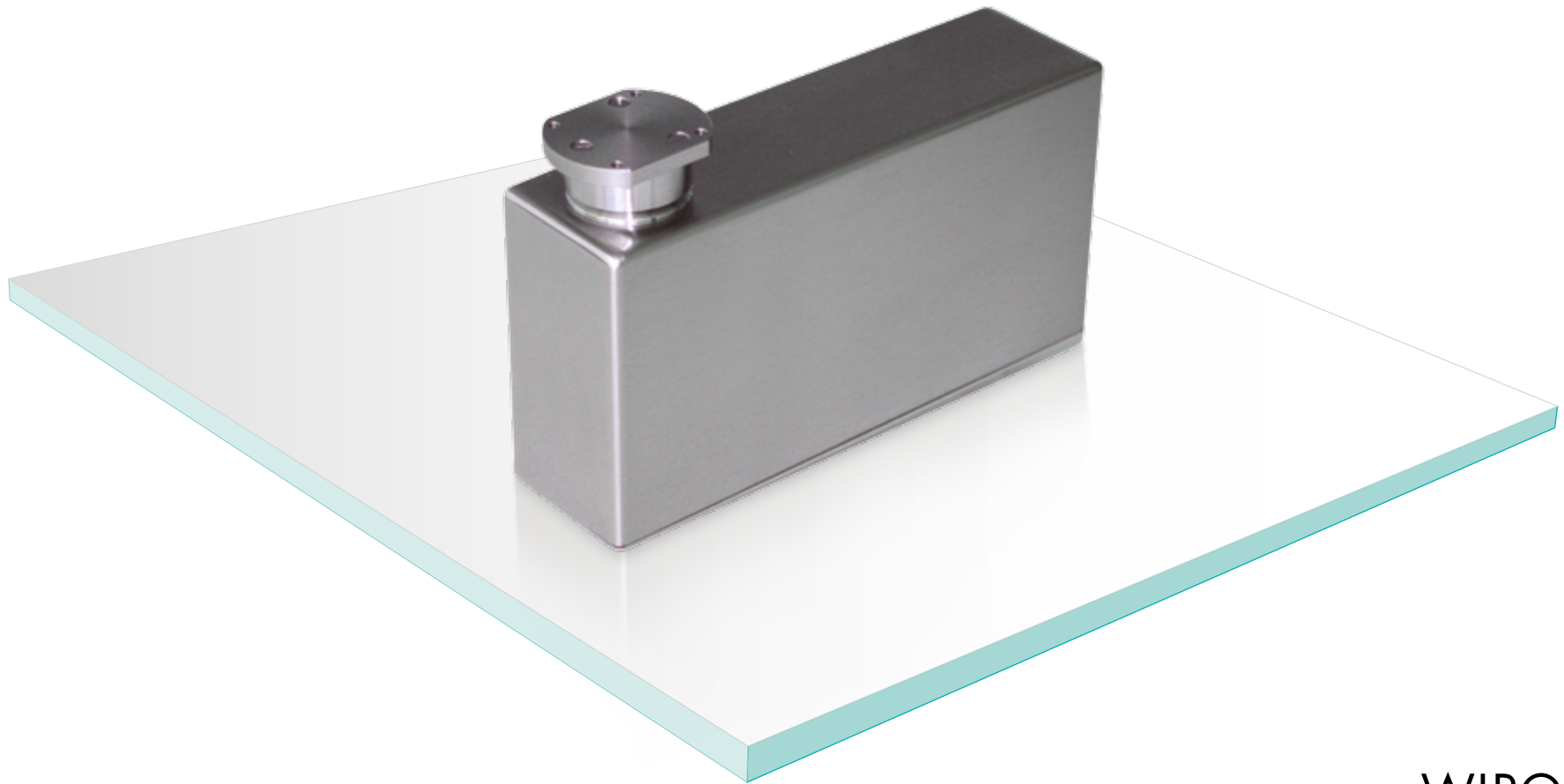


SW-M-FS

HIGH PRECISION WEIGH CELL

PRODUCT INFORMATION



DESCRIPTIONS

The series SW-M-FS Weigh Cells cover the weighing range up to 2,000 g. They have been specifically designed as compact sensor components, which are suited for installation into multi-track applications and everywhere where smallest frame sizes are demanded.

By using GMP-tailored design, all Weigh Cells are also suitable for use in pharmaceutical industrial plants.

The system dependent active self-damping ensures the shortest possible measuring times while maintaining the highest resolution.

The Weigh Cell sensor is connected with the separate electronic box via a cable of 5 m length. The electronic box is prepared for top hat rail mounting in control cabinets. The system provides final weighing values by default via a CAN, RS 422, Profibus DP, Profinet IO, Ethernet/IP, EtherCAT or Powerlink interface. The integrated software filters can be configured multifunctional, enabling optimal adaptation of the weighing system to the respective ambient conditions. The Weigh Cells extensive command set facilitates simplified control engineering integration. Complemented by a variety of options, the Weigh Cell can also fulfill very specific requirements.

FEATURES

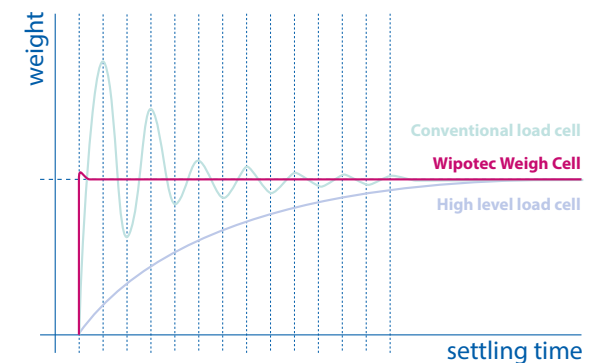
- ▲ Weighing range up to 2,000 g, covered by 2 models
- ▲ Additive dead load range up to 600 g
- ▲ Slim construction in stainless steel housing with separate electronic box
- ▲ Multi-track applications starting from 50 mm centerline distance
- ▲ Wash Down Mode (optional)
- ▲ Interface 1: CAN, RS 422, Profibus DP, Profinet IO, Ethernet/IP, EtherCAT, Powerlink (optional)
- ▲ Interface 2: RS 232 for service and configuration
- ▲ Sampling rate 1 ms

TO BE USED IN

- ▲ Filling and packaging machines
- ▲ Special machine manufacturing
- ▲ Multi-track weighing systems
- ▲ In-Process control applications
- ▲ CIP (Cleaning In Place)

OPTIONS

- ▲ **Option 09:** Stainless steel housing (standard)
- ▲ **Option 10:** RS 422 instead of CAN interface
- ▲ **Option 11:** Bus operation (standard)
- ▲ **Option 12:** Higher display resolution
- ▲ **Option 13:** Binary I/O channels (standard)
- ▲ **Option 14:** Filling algorithm
- ▲ **Option 29:** Wash Down Mode IP 65
- ▲ **Option 34:** Interfac connection below for separate electronic box (standard)
- ▲ **Option 35:** Profibus DP instead of CAN interface
- ▲ **Option 36:** Ethernet/IP instead of CAN interface
- ▲ **Option 37:** Profinet IO instead of CAN interface
- ▲ **Option 38:** EtherCAT instead of CAN interface
- ▲ **Option 39:** Powerlink instead of CAN interface



Weigh Cell type	SW-M 1000/600-FS	SW-M 2000/600-FS
Weighing range	1,000 g	2,000 g
Electrically adjustable dead load range	600 g	600 g
Display value (d)	0.01 g	0.02 g
³⁾ Display value (d) with higher resolution (Option)	0.002 g	0.005 g
Linearity ≤	± 0.004 g	± 0.01 g
¹⁾ Repeatability (S) ≤	0.002 g	0.005 g
Maximum dimension of weighing platform	80 x 80 mm	
¹⁾²⁾ Settling time (on 1‰ of final value)	< 120 ms	
Protection class of the Weigh Cell	IP 44/ ⁴⁾ IP 65	
Temperature range	+5 °C to +40 °C	
⁵⁾ Power supply electronic box	24 V DC, ± 5 %, 0.5 A	
Weight	approx. 1,000 g	
Interface 1	CAN, RS 422, Profibus DP, Profinet IO, Ethernet/IP, EtherCAT, Powerlink	
Interface 2	RS 232, 115200/8/1/odd	
Housing material	Stainless steel AISI 316L	

1) Depends on the preference settings and on setup and ambient conditions of the system | The absolute repeatability is +/- 3 s

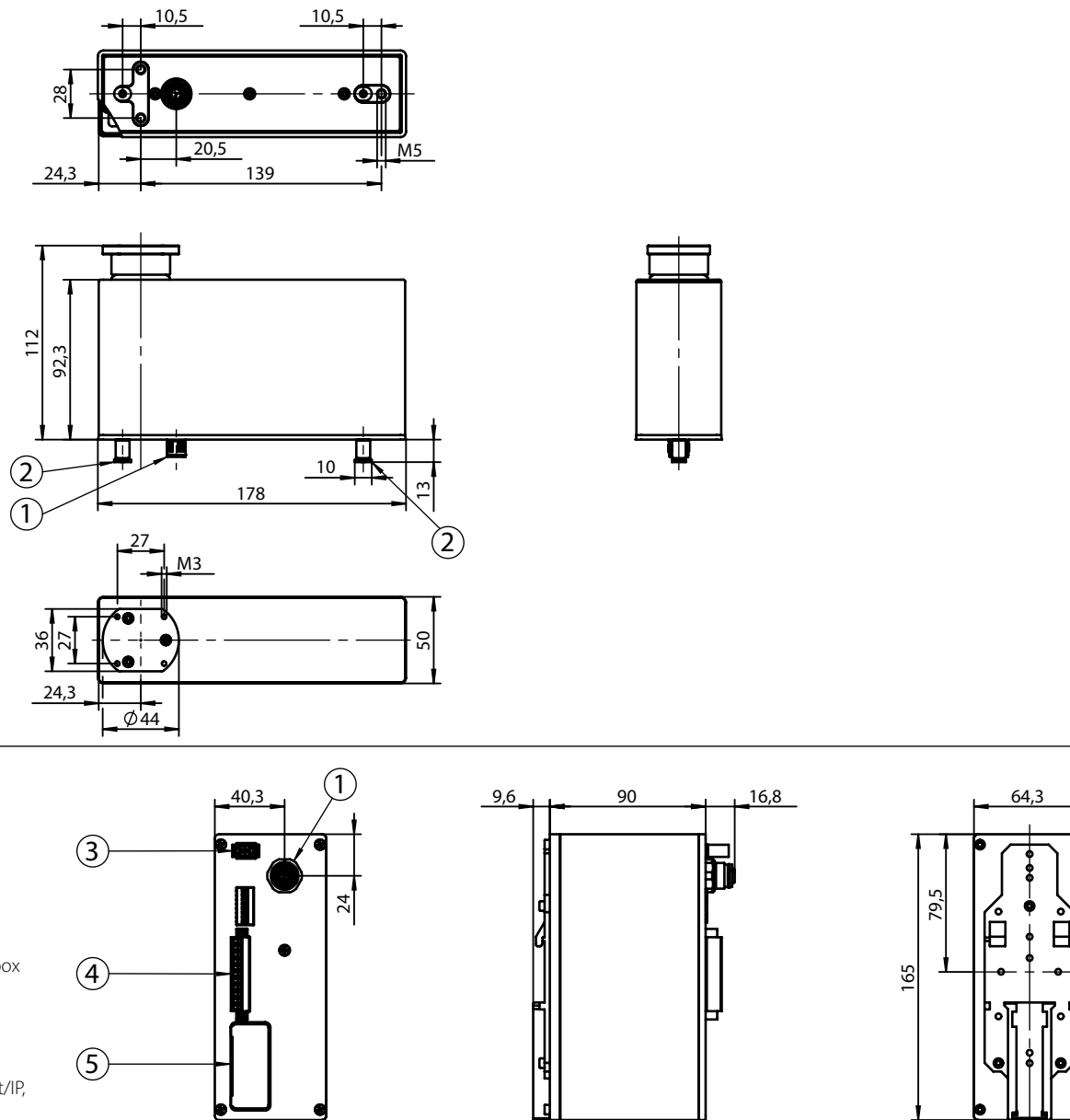
2) Weighing time = settling time plus (adjustable) measuring time

3) Temperature range: +10 °C to +30 °C

4) Protection class IP 65 in combination with Option Wash Down Mode

5) 5 m cable connection between electronic box and sensor

Customer specific variations on request



All measurements in mm

Subject to technical modifications

2015-04-EN-SW-M-FS

Headquarters

Wipotec GmbH
 Adam-Hoffmann-Str. 26
 67657 Kaiserslautern, Germany
 T +49.631.34146-0
 F +49.631.34146-8690
 info@wipotec.com
 www.wipotec.com

Italy

Wipotec Italia s.r.l.
 Via Antonio Gramsci, 18
 20016 Pero (MI), Italy
 T +39.02.73952424
 F +39.02.45508075
 info@wipotec.it
 www.wipotec.it

USA

Wipotec North America
 700 Old Roswell Lakes Parkway,
 Suite 200
 Roswell, Georgia 30076, USA
 T +1.770.971.5414
 F +1.770.509.5524
 info.usa@wipotec.com
 www.wipotec.com