

MV-CA016-10GM/GC

1.6 MP 1/2.9" CMOS GigE Area Scan Camera



GEN*i*CAM

GIG*E*
VISION

Introduction

MV-CA016-10GM/GC camera adopts Sony® IMX 273 sensor and provides high quality image. The GigE interface provides high-speed and real-time transmission of uncompressed data with the maximum frame rate reaching 78.2 fps at full resolution.

Key Feature

- Adopts GigE interface and max. transmission distance of 100 meters without relay.
- Supports auto and manual adjustment for exposure control, LUT, Gamma correction, etc.
- Up to 128 MB local memory for burst transmission and retransmission.
- Supports hardware trigger, software trigger, etc.
- Compatible with GigE Vision Protocol V2.0, GenICam Standard, and third-party software based on these protocol and standard.

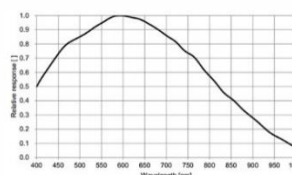
Available Model

- Mono camera: MV-CA016-10GM
- Color camera: MV-CA016-10GC

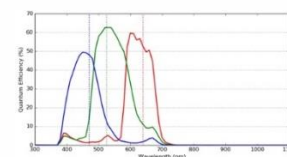
Applicable Industry

Electronic semiconductor, factory automation, and quality inspection, etc.

Sensor Quantum Efficiency

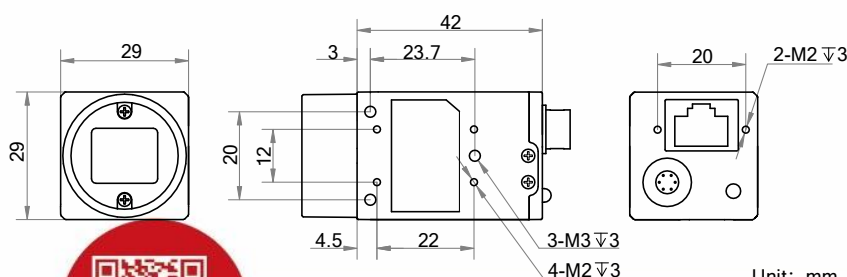


MV-CA016-10GM



MV-CA016-10GC

Dimension



Unit: mm



Specification

Model	MV-CA016-10GM	MV-CA016-10GC
Camera		
Sensor type	CMOS, global shutter	
Sensor model	Sony® IMX273	
Pixel size	3.45 μm × 3.45 μm	
Sensor size	1/2.9"	
Resolution	1440 × 1080	
Max. frame rate	78.2 fps @1440 × 1080	
Dynamic range	71.4 dB	
SNR	41 dB	
Gain	0 dB to 20 dB	
Exposure time	1 μs to 10 sec	
Exposure mode	Off/ Once /Continuous exposure mode	
Mono/color	Mono	Color
Pixel format	Mono 8/10/10p/12/12p	Mono8/10/12, Bayer RG 8/10/10p/12/12p YUV 422 Packed, YUV422_YUYV_Packed, RGB8
Binning	Supports 1 × 1, 2 × 2	
Decimation	Supports 1 × 1, 2 × 2	
Reverse image	Supports horizontal and vertical reverse image output	
Image buffer	128 MB	
Electrical feature		
Data interface	Gigabit Ethernet, compatible with Fast Ethernet	
Digital I/O	6-pin Hirose connector provides power and I/O, including opto-isolated input × 1 (Line 0), opto-isolated output × 1 (Line 1), bi-directional non-isolated I/O × 1 (Line 2).	
Power supply	9 VDC to 24 VDC, supports PoE	
Power consumption	Typ. 3 W@12 VDC	
Mechanical		
Lens mount	C-Mount	
Dimension	29 mm × 29 mm × 42 mm (1.1" × 1.1" × 1.7")	
Weight	Approx. 68 g (0.15 lb)	
Ingress protection	IP 30 (under proper lens installation and wiring)	
Temperature	Working temperature: 0 °C to 50 °C (32 °F to 122 °F) Storage temperature: -30 °C to 70 °C (-22 °F to 158 °F)	
Humidity	20% to 80% RH, non-condensing	
General		
Client software	MVS or third-party software meeting with GigE Vision Protocol	
Operating system	32/64-bit Windows XP/7/10, 32/64-bit Linux and 64-bit MacOS	
Compatibility	GigE Vision V2.0, GenICam	
Certification	CE, FCC, RoHS	

HIKROBOT

Hangzhou Hikrobot Co., Ltd.
 en.hikrobotics.com