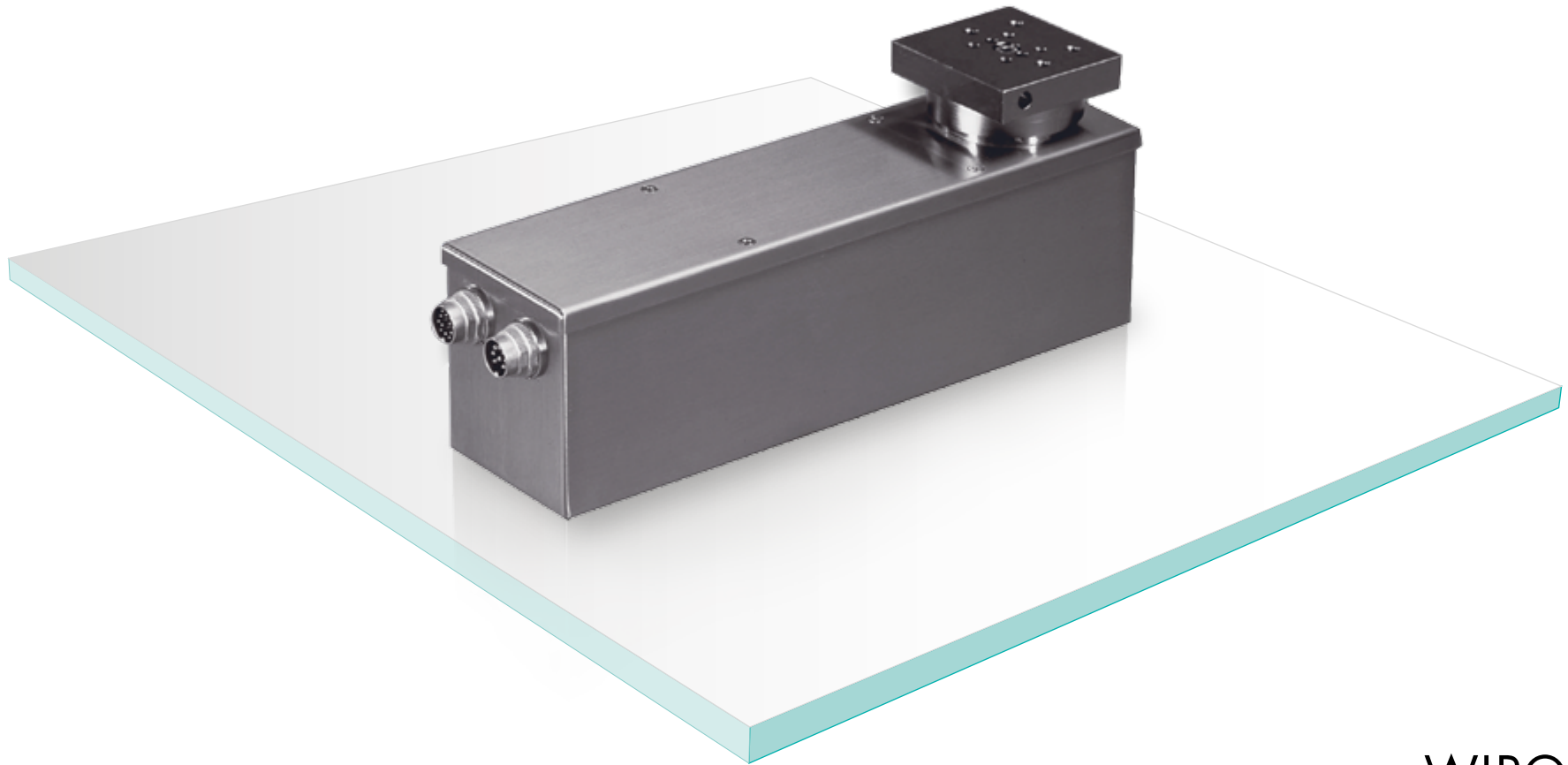


SW

HIGH PRECISION WEIGH CELL

PRODUCT INFORMATION



## DESCRIPTION

The series SW Weigh Cells cover the weighing range up to 2,000 g. They have been specifically designed as compact sensor components and are especially suited for installation into checkweighers, packaging and filling machines and multi-track weighing systems.

The Weigh Cells constructed in stainless steel (GMP compatible) are also suitable for applications in the pharmaceutical industry.

The Weigh Cell comes standard equipped to supply final weighing values via a serial interface as ready to connect modular components. The integrated software filters can be configured multifunctional, enabling optimal adaptation of the weighing system to the respective ambient conditions.

The Weigh Cell's extensive command set facilitates simplified control engineering integration. Complemented by a variety of options, the Weigh Cell can also fulfil very specific requirements.

## FEATURES

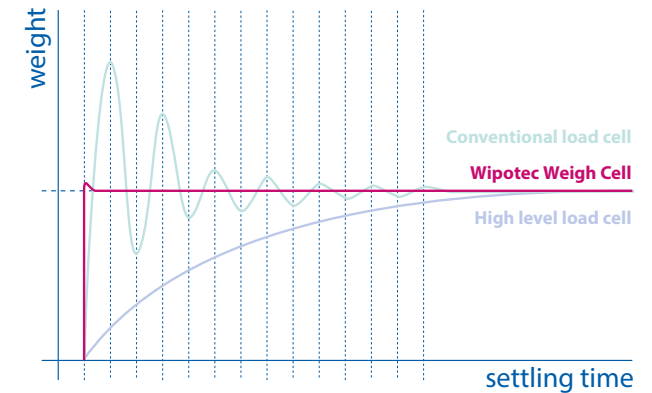
- ▲ Weighing range up to 2,000 g, covered by 7 types
- ▲ Additive dead load range up to 2,000 g
- ▲ Stainless Steel housing
- ▲ Protection class IP 44
- ▲ Binary I/O channels with customer-specific functions
- ▲ Interface RS 232
- ▲ Slim construction
- ▲ Multi-track applications starting from 70 mm centerline distance

## TO BE USED IN

- ▲ Filling machines
- ▲ Packaging machines
- ▲ Checkweighers (for different branches like food, pharmaceuticals, chemical and cosmetics)
- ▲ Multi-track weighing systems
- ▲ In-Process control applications

## OPTIONS

- ▲ **Option 10:** RS 422 instead of RS 232 Interface
- ▲ **Option 11:** Bus operation
- ▲ **Option 12:** Higher display resolution
- ▲ **Option 13:** Binary I/O channels (2-fold)
- ▲ **Option 14:** Filling algorithm
- ▲ **Option 28:** Measuring range changeover



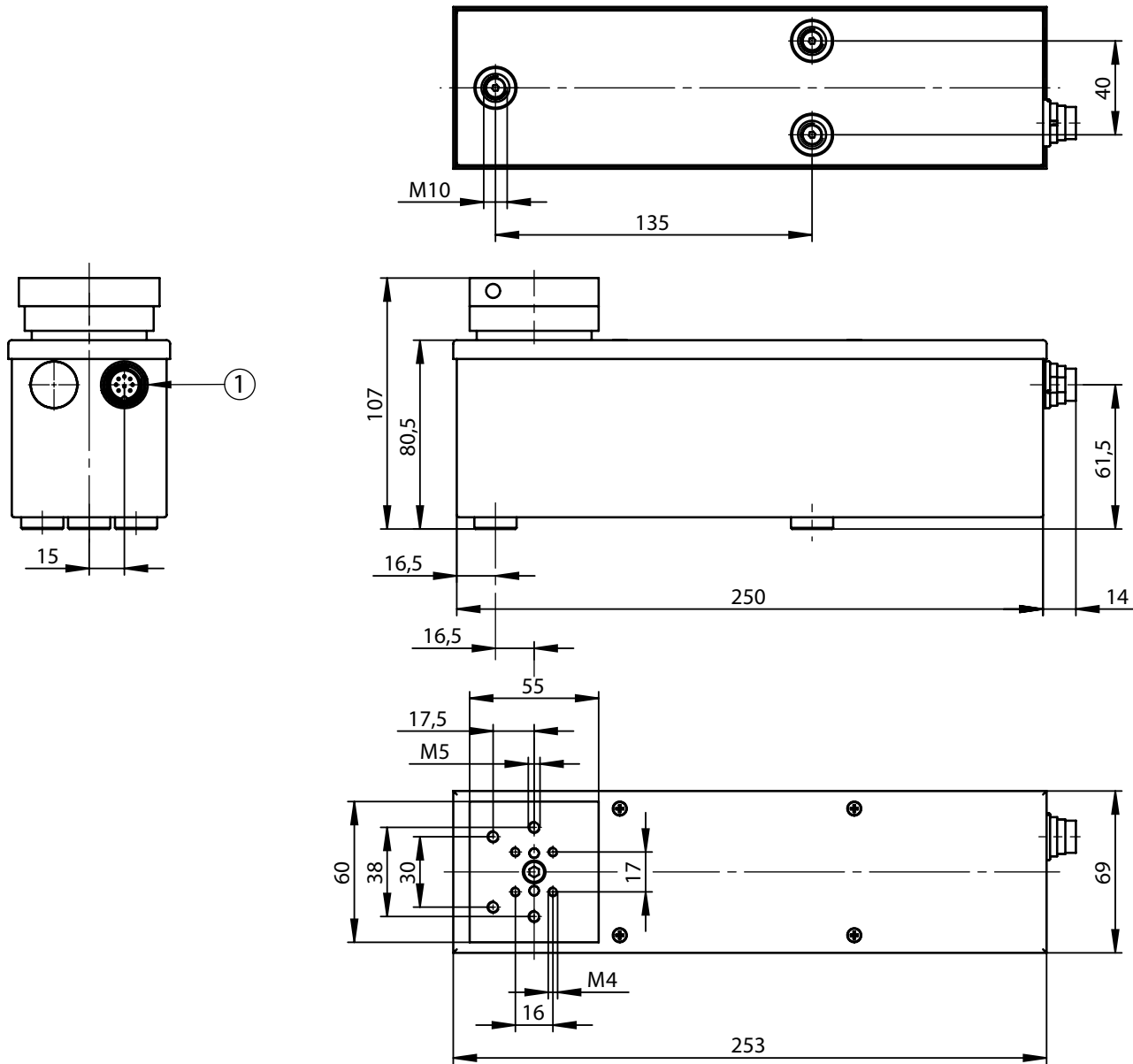
Weigh Cell type	SW 20/150	SW 50/300	SW 100/400	SW 200/600	SW 500/1000	SW 1000/1000	SW 2000/2000
Weighing range	20 g	50 g	100 g	200 g	500 g	1,000g	2,000 g
Electrical adjustable dead load range	150 g	300 g	400 g	600 g	1,000 g	1,000 g	2,000 g
Verification scale interval (e)	0.002 g	0.005 g	0.01 g	0.02 g	0.05 g	0.1 g	0.2 g
Display value (d)	0.001 g	0.002 g	0.005 g	0.01 g	0.02 g	0.05 g	0.1 g
<sup>3)</sup> Display value (d) with higher resolution (Option)	0.001 g	0.001 g	0.002 g	0.005 g	0.01 g	0.02 g	0.05 g
Linearity ≤	± 0.001 g	± 0.002 g	± 0.005 g	± 0.01 g	± 0.02 g	± 0.05 g	± 0.1 g
<sup>1)</sup> Repeatability (S) ≤	0.001 g	0.001 g	0.002 g	0.005 g	0.01 g	0.02 g	0.05 g
Maximum diameter of weighing platform	80 x 60 mm	80 x 60 mm	100 x 80 mm	150 x 100 mm	150 x 100 mm	150 x 100 mm	200 x 100 mm
<sup>1)2)</sup> Settling time (on 1 ‰ of final value)	< 120 ms						
Protection class of the Weigh Cell	IP 44						
Temperature range	+5 to +40 °C						
Power supply	± 15 V, ± 5 %, 0.5 A						
Weight	approx. 2,500 g						
Interface 1	RS 232, RS 422						
Housing material	Stainless steel						

1) Depends on the preference settings and on setup and ambient conditions of the system | The absolute repeatability is +/- 3 s

2) Weighing time = settling time plus (adjustable) measuring time

3) Temperature range: +10 °C to +30 °C

Customer specific variations on request



1: Interface 1

All measurements in mm

Subject to technical modifications

2015-04-EN-SW

**Headquarters**

Wipotec GmbH  
 Adam-Hoffmann-Str. 26  
 67657 Kaiserslautern, Germany  
 T +49.631.34146-0  
 F +49.631.34146-8690  
 info@wipotec.com  
 www.wipotec.com

**Italy**

Wipotec Italia s.r.l.  
 Via Antonio Gramsci, 18  
 20016 Pero (MI), Italy  
 T +39.02.73952424  
 F +39.02.45508075  
 info@wipotec.it  
 www.wipotec.it

**USA**

Wipotec North America  
 700 Old Roswell Lakes Parkway,  
 Suite 200  
 Roswell, Georgia 30076, USA  
 T +1.770.971.5414  
 F +1.770.509.5524  
 info.usa@wipotec.com  
 www.wipotec.com