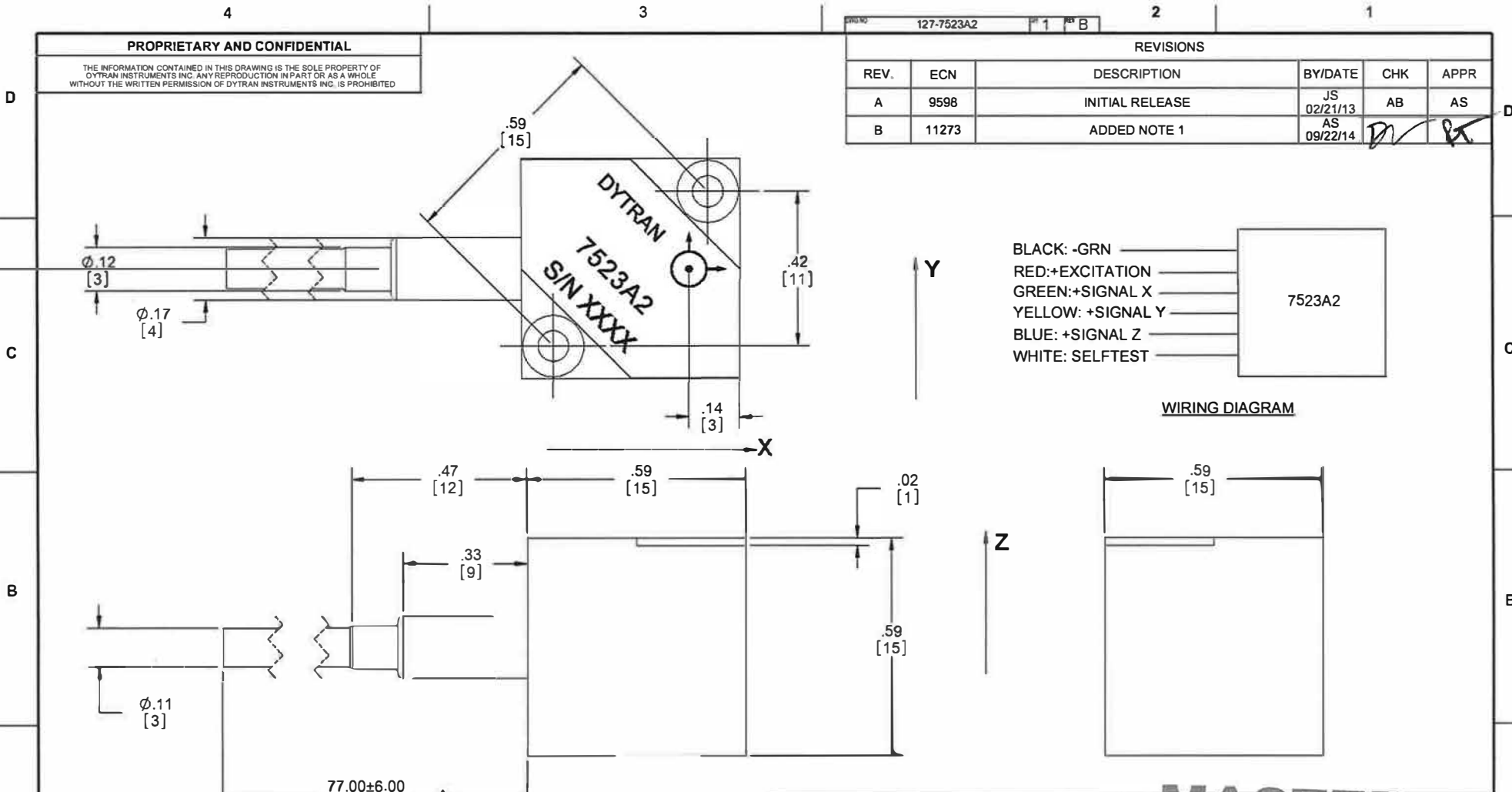


PROPRIETARY AND CONFIDENTIAL

THE INFORMATION CONTAINED IN THIS DRAWING IS THE SOLE PROPERTY OF DYTRAN INSTRUMENTS INC. ANY REPRODUCTION IN PART OR AS A WHOLE WITHOUT THE WRITTEN PERMISSION OF DYTRAN INSTRUMENTS INC. IS PROHIBITED

| 127-7523A2 | | | | | |
|------------|-------|-----------------|----------------|-----------|-----------|
| REVISIONS | | | | | |
| REV. | ECN | DESCRIPTION | BY/DATE | CHK | APPR |
| A | 9598 | INITIAL RELEASE | JS 02/21/13 | AB | AS |
| B | 11273 | ADDED NOTE 1 | AS 09/22/14 | <i>AS</i> | <i>JS</i> |



| | | | | |
|---|---|--|---|--|
| <p>UNLESS OTHERWISE SPECIFIED: INTERPRET DIM & TOL PER ASME Y14.5M - 1994 REMOVE BURRS. COUNTERSINK INTERNAL THDS 90° TO MAJOR DIA. CHAM EXT THDS 45° TO MINOR DIA. THD LENGTHS AND DEPTHS ARE FOR MIN FULL THDS DIMENSIONS APPLY AFTER FINISHING</p> | <p>UNLESS OTHERWISE SPECIFIED: DIMENSIONS ARE IN INCHES DIMENSIONS IN BRACKETS ARE IN MILLIMETERS TOLERANCES ARE:</p> | | <p>MASTER ONLY IN RED DYTRAN INSTRUMENTS INC. Chatsworth, CA</p> | |
| | <p>DECIMALS METRIC ANGLES</p> <p>XX ± 0.03 X ± 0.8 ± 1°</p> <p>XXX ± 0.10 XX ± 0.25</p> | <p>TITLE: OUTLINE/ INSTALLATION DRAWING, 7523A2</p> | | |
| | <p>APPROVALS DATE</p> <p>ORIG JS 02/07/13</p> <p>CHK <i>AS</i></p> <p>APP <i>AS</i></p> | <p>SIZE CAGE CODE DWG NO</p> <p>B 2W033 127-7523A2</p> | | |
| | <p>DO NOT SCALE DRAWING</p> | <p>SCALE: 4:1 SOLIDWORKS SHEET 1 OF 1</p> | | |

1 RECOMMENDED MOUNTING TORQUE 6-7 LB-IN
NOTES: UNLESS OTHERWISE SPECIFIED



Presented by: Absolute Gauge Technologies
sales@absolute-gauge.com; www.absolute-gauge.com,
Toronto: 416 754 3168, Montreal: 514 695 5147, Toll Free: 1 888 754 7008

SPECIFICATIONS, SERIES 7523A TRIAXIAL ACCELEROMETER

PERFORMANCE

| | A1 | A2 | A3 | A5 | UNITS |
|----------------------------|--------|--------|--------|-------|-------|
| Input | ±2 | ±5 | ±15 | ±50 | g |
| Output, bias, ±20% | 2.5 | 2.5 | 2.5 | 2.5 | V |
| Output range | ±1.1 | ±1.4 | ±1.4 | ±1.8 | V |
| Bandwidth, X & Y Axes ±3db | 0-1500 | 0-1500 | 0-1500 | 0-400 | Hz |
| Z Axis ±3db | 0-500 | 0-500 | 0-1500 | 0-400 | Hz |
| Sensitivity, ± 20% | 550 | 280 | 93 | 36 | mV/g |
| Output Noise, nom. | 3 | 5 | 10 | 40 | mGrms |
| Output Impedance | 3500 | 35,000 | 3500 | <500 | Ω |

PERFORMANCE FOR ALL MODEL NUMBERS (T_c=+25°C)

| | MIN | NOM | MAX | UNITS |
|-------------------------------------|-----|------|------|---------|
| Maximum Mechanical Shock | | | 4000 | g peak |
| Resonance Frequency | | 5000 | | Hz |
| Transverse Sensitivity | | | 2 | % |
| Operating Temperature | -55 | | +125 | °C |
| Compensated Temperature Range (CTR) | -20 | | +70 | °C |
| Thermal Zero in CTR | | | 0.03 | % FS/°C |
| Thermal Sensitivity Drift in CTR | | | 0.02 | % FS/°C |
| Storage Temperature | -55 | | -150 | °C |
| Non-Linearity | | | 0.3 | % |
| Excitation, regulated | 4.8 | | 5.2 | VDC |
| Current consumption | | 4.5 | | mA |

PHYSICAL PARAMETERS FOR ALL MODEL NUMBERS

| | Anodized Aluminum | | | | UNITS |
|--------------------|--------------------------|----|----|----|-------|
| | A1 | A2 | A3 | A5 | |
| Case Material | | | | | |
| Cable Length | 77 | 77 | 77 | 77 | inch |
| Mounting Provision | two M2 screws (provided) | | | | |
| Mounting Torque | 6-7 | | | | lb-in |

| | NOM | | | | UNITS |
|-----------------------|------|------|------|------|-------|
| | A1 | A2 | A3 | A5 | |
| Case Length | 0.59 | 0.59 | 0.59 | 0.59 | inch |
| Case Width | 0.59 | 0.59 | 0.59 | 0.59 | inch |
| Case Height | 0.30 | 0.59 | 0.59 | 0.59 | inch |
| Mounting Hole Spacing | 0.59 | 0.59 | 0.59 | 0.59 | inch |
| Mass | 10 | 10 | 10 | 10 | grams |

NOTES:

SUPPLIED ACCESSORIES:

A1 (2) Mounting Screws (Model 6722), M2 x 12 flathead
 A3, A5 (2) Mounting Screws (Model 6914), M2 x 20 flathead



Presented by: Absolute Gauge Technologies
 sales@absolutegauge.com; www.absolutegauge.com,
 Toronto: 416 754 3168, Montreal: 514 695 5147, Toll Free: 1 888 754 7008