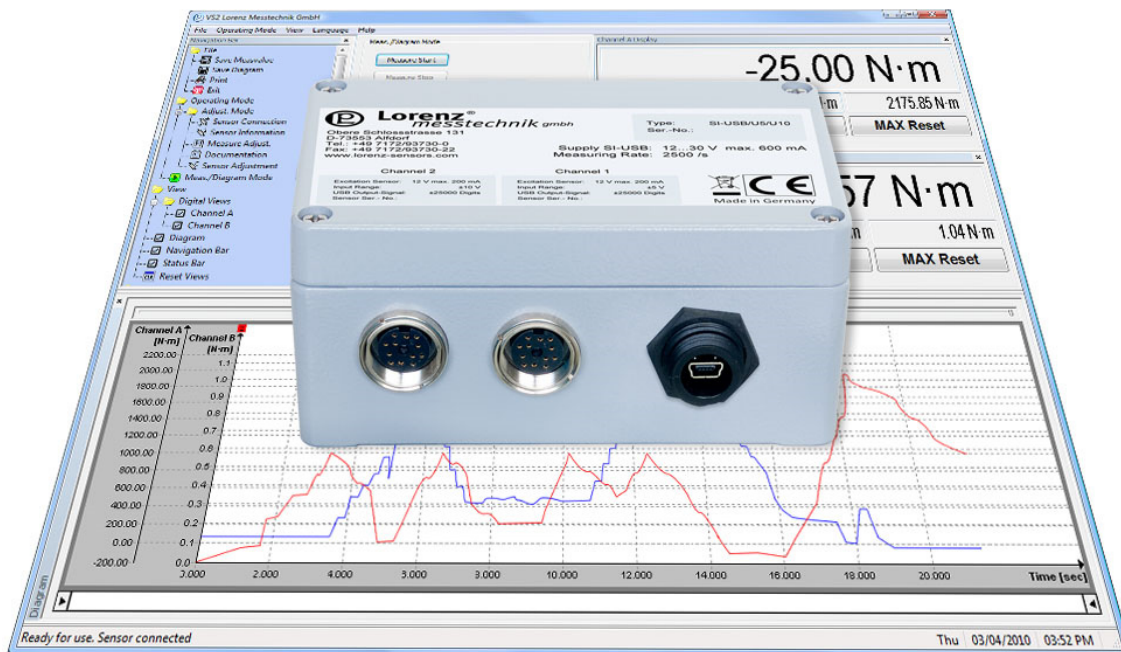




## 2 Channel USB-Sensor-Interface with Configuration and Evaluation Software

**SI-USB**

- Fast Measurement of up to 2500/s
- Up to 16 Bit Resolution
- Full Synchronism of both Measuring Channels
- Input Ranges for mV, V and mA
- Input Ranges combinable with each other
- Adjustment and Control Trigger via Software



### Description

The sensor interface SI-USB is connected between the sensor and the PC. By this, analog sensor signals with up to 16 bit resolution are digitized. Highly-dynamic are realizable with a measuring rate of 2500 measurements/sec per measurement channel. The measured values are transferred to a PC via the USB interface and are visualized through the software. If a control signal is integrated in the sensor, an automatic adjustment can be carried out, which is checkable at any time (monitoring of the measuring chain).

Following sensor output signals can be digitally converted and conveniently displayed and evaluated by the freely available corresponding software:

USB/SG	Excitation 5 V $\leq$ 20 mA Input range $\pm$ 3 mV/V
USB/U5/U10	Excitation 12 V $\leq$ 200 mA Input range $\pm$ 5 V/ $\pm$ 10 V
USB/I20	Excitation 12 V $\leq$ 200 mA Input range 0/4...20 mA

Many commercially available sensors such as force-, torque-, displacement- or pressure sensors can be used with the SI-USB. The sensor parameters can be stored in the SI-USB. After a one-time parameterization each sensor is automatically recognized by the software.

The voltage supply of the SI-USB occurs via an external power supply unit. Through the measuring amplifier, the connected sensors are being directly supplied with voltage directly, whereby a separate voltage of the sensors has been omitted.

Unwanted frequencies are filtered with the second-order low-pass filter. Here, a differentiation between 4 limit frequencies is possible. The connection to LabVIEW or the integration into internal programs is possible with the freely available driver package.

Technical changes under reserve

**Specifications**

Type	SI-USB/SG/SG	SI-USB/U5/U5	SI-USB/U10/U10	SI-USB/I20/I20	SI-USB/SG/U5
Article-No.	111963	111964	113022	111966	111973
Input Range	2*SG	2*±5 V	2*±10 V	2*0/4...20 mA	SG; ±5 V
Type	SI-USB/SG/U10	SI-USB/SG/I20	SI-USB/U5/U10	SI-USB/U5/I20	SI-USB/U10/I20
Article-No.	113021	111974	113023	111975	113024
Input Range	SG; ±10 V	SG; 0/4...20 mA	±5 V; ±10 V	±5 V; 0/4...20 mA	±10 V; 0/4...20 mA

**Evaluation Side**

Supply Power Supply <sup>1</sup>	Voltage	100...240 V AC
Output Power Supply		24 V DC 1.25 A
Supply Voltage SI-USB		12...30 V DC ≤600 mA
Excitation Sensor	SG	5 V ≤20 mA
	U5/U10/I20	12 V ≤200 mA
Measured Values	SG	±3 mV/V = ±30000 Digits
	U5/U10	±5 V/±10 V = ±25000 Digits
	I20	0/4...20 mA = 0/4000...20000 Digits
Resolution	SG	1 mV/V = 10000 Digits
	U5	1 V = 5000 Digits
	U10	1 V = 2500 Digits
	I20	1mA = 1000 Digits
Zero Point	SG/U5/U10/I20	0 Digits
Output Format		16 Bit Signed Int.
Input Resistance	SG/U5/U10	>1 MΩ
	I20 burden	62 Ω
Second-Order Low-Pass Filter	Hz	30/300/1000/3000
Measuring Rate		max. 2500 Meas./s
Temperature Drift		4 Bit/10 K
Linearity Error		±32 Digits
Accuracy		±32 Digits

**Miscellaneous**

Cable Length SI-USB-Evaluation <sup>2</sup>		3 m
Cable Length SI-USB-Sensor		1 m (max. 3 m)
Nominal Temperature Range		+10...+40 °C
Service Temperature Range		0...+50 °C
Storage Temperature Range		-10...+70 °C
Dimensions (L x B x H)		125 x 80 x 57 mm
Weight		480 g
Level of Protection		IP40
Electrical Connection	SG	Female socket 6-pin
	U5/U10/I20	Female socket 12-pin
	USB	PX0446 IP68 B Mini USB

Article-No.	Option/Accessory	Description
110564	mV/V	mV/V adjusted sensitivity
10302	KS6	Male cable connector 6-pin
10303	KS12	Male cable connector 12-pin

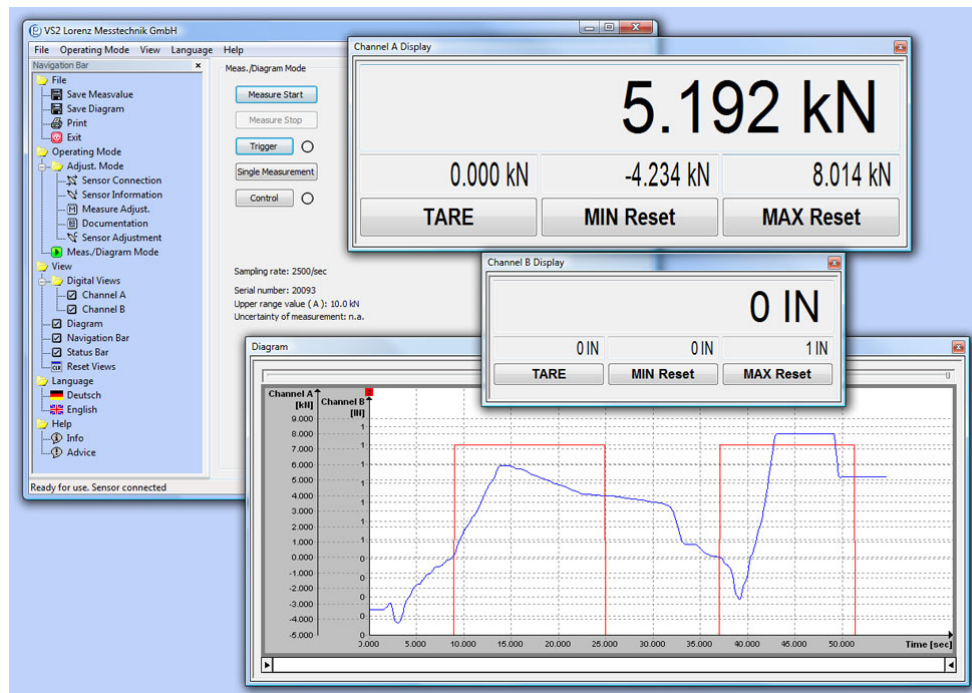
<sup>1</sup> Power Supply in scope of delivery.<sup>2</sup> Cable SI-USB-Evaluation in scope of delivery.



## Configuration and Evaluation Software

**VS2**

- Comfortable Configuration and Evaluation Software
- Graphical Presentation of up to 2 Input Channels max.
- Automatic Scaling of Y-axis
- Simultaneous Storage of up to 2 Input Channels
- Automatic Storage Function of the Measured Values as CSV- and BMP-File



### Description

Configuration and evaluation software for analysis and graphical presentation on a PC.

The software allows direct read-in of measured data into a text file in CSV-Format through the USB-Port of a PC. This enables further analyses with a commercially available spreadsheet program at any time.

### Specifications

Type	VS2 <sup>3</sup>
Interface	USB
Protocol	Lorenz standard protocol
System Requirements	Windows® '03/ '08/ Vista/ 7/ 8 32/64 Bit <sup>4</sup> Dual-Core ex 1.8 GHz (with diagram)

Conversion in physical variables	✓
Simultaneous measurement	Up to 2 input channels
Graphical presentation of the measured variables	✓
Automatic or manual storage in a CSV- and BMP-file	✓
Print-out of the diagram with date and definable headline	✓
Scaling function of the input variable to any display value with unit	✓
Resettable minimum value memory for any measured variable	✓
Resettable maximum value memory for any measured variable	✓
Variable average determination	✓
Tare for each measured value	✓

<sup>3</sup> Software/driver download: [www.lorenz-sensors.com](http://www.lorenz-sensors.com).

<sup>4</sup> Windows® is either a registered brand or brand of the Microsoft Corporation in the USA and/or other countries.

All trademarks or brands used in this document refer only to the respective product or the holder of the trademark or brand. Lorenz Messtechnik GmbH does not raise claims to other than their own trademarks or brands.