

## MR-F4-1000-C(HI)

### Forklift Mobile Robot



### Key Feature

- Adopts narrow robot body design, transports in forklift mode, and supports mast customization and fork size customization.
- Adopts SLAM navigation to achieve accurate positioning.
- Supports smooth and omnidirectional motions with max. running speed of 1.2 m/s.
- Adopts smart/independent power management, and supports auto-charge and self-returning after charging completed, and environmental friendly.
- Supports multiple safety protections, such as laser/infrared obstacle avoidance, load detection, emergency stop button, and audible alarm.
- Supports lifting, carrying, rotating and lowering goods up to 1000 kg (2204.62 lb.) via standard pallets.
- Supports indicating device status via LCD screen and status indicator.
- Supports Wi-Fi communication and seamless roaming and operation smoothly in a network-covered area.

### Typical Application

E-commerce, electronics manufacturing, automobile, consumer electronics, mechanical manufacturing, texture, tobacco, medicine, etc.

### Available Model

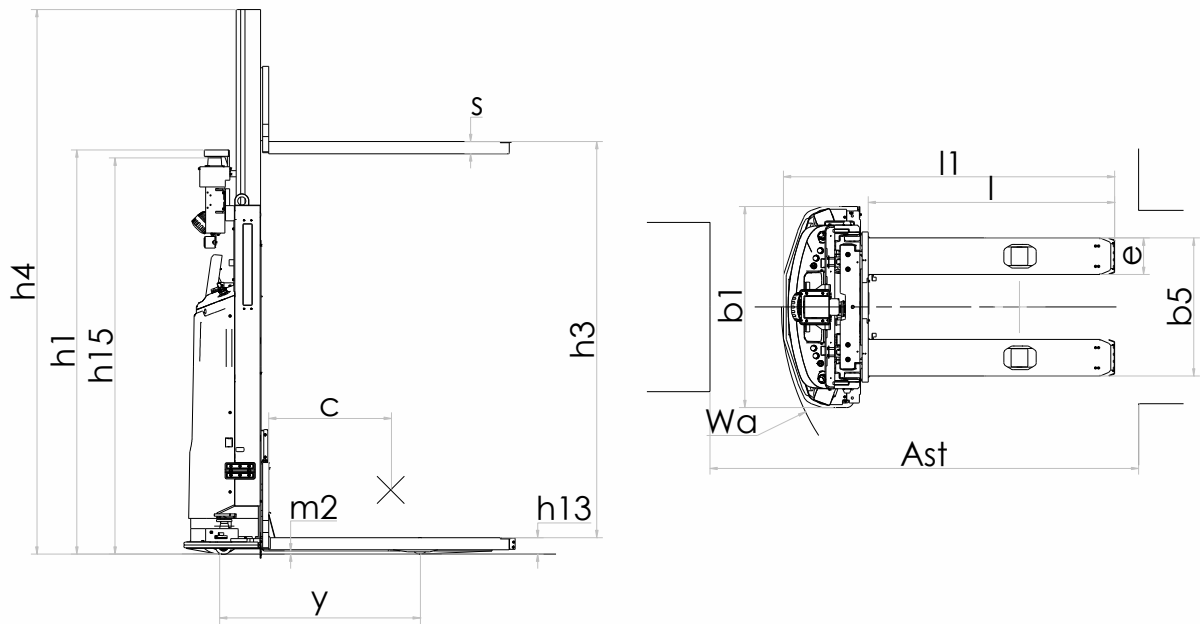
MR-F4-1000-C(HI)

### Accessory

Charging station: CH-48/60(CE)

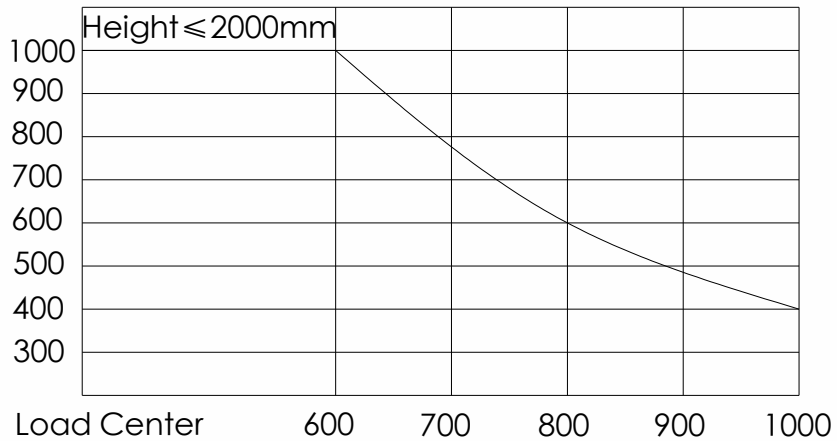


## Dimension

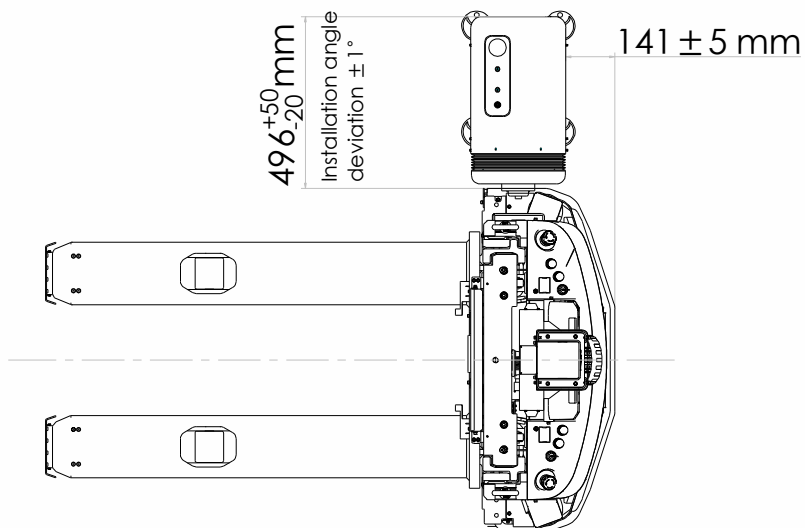


## Loading Curve

Load Weight (kg)



## Charging Station Deployment



## Specification

<b>Model</b>	<b>MR-F4-1000-C(HI)</b>
<b>Basic Parameter</b>	
<b>Dimension</b>	1640 mm × 990 mm × 1990 mm (64.57" × 38.98" × 78.35")
<b>Weight (with Battery)</b>	715 kg (1576.30 lb.)
<b>Rated Load</b>	1000 kg (2204.62 lb.)
<b>Load Center Distance</b>	600 mm (23.62")
<b>Wheelbase</b>	991.3 mm (39.03")
<b>Lifting Height</b>	2031 mm ± 3 mm (79.96" ± 0.11")
<b>Max. Gantry Height</b>	2682 mm (105.59")
<b>Fork above Ground after Lowering</b>	81 mm ± 3 mm (3.19" ± 0.11")
<b>Fork Height/Width/Length</b>	60 mm/180 mm/1220 mm (2.36"/7.09"/48.03")
<b>Fork Distance</b>	680 mm (26.77")
<b>Min. Ground Clearance</b>	16 mm (0.63")
<b>Applicable Pallet Dimension</b>	1200 mm × 1000 mm (47.24" × 39.37")
<b>Laser Scan Height</b>	1950 mm (76.77")
<b>Min. Rotation Radius</b>	1178 mm (46.38")
<b>Right Angled Passage Width</b>	2052 mm (80.79")
<b>Motion Performance</b>	
<b>Running Speed (Full Load/Empty)</b>	1.0/1.2 m/s
<b>Positioning Accuracy</b>	± 10 mm (0.39")
<b>Positioning Angle Accuracy</b>	± 1°
<b>Repeated Positioning Accuracy</b>	± 10 mm (0.39")
<b>Max. Gradeability (Full Load/Empty)</b>	3/5%
<b>Lifting Fork Speed (Full Load/Empty)</b>	100/135 mm/s
<b>Lowering Fork Speed (Full Load/Empty)</b>	130/100 mm/s
<b>Motion Method</b>	Steering wheel driving, supports forward, backward, arc motion and rotating in place
<b>Battery Performance</b>	
<b>Rated Voltage</b>	48 V
<b>Capacity</b>	70 Ah
<b>Charge Cycle</b>	1500 times (for fully charging and discharging)
<b>Endurance</b>	6 h to 8 h
<b>Charge Time</b>	≤ 2 h (for fully charging and discharging)
<b>Charge Method</b>	Side
<b>Safety Protection</b>	
<b>Laser Obstacle Avoidance</b>	Supports
<b>Driving Recorder</b>	Optional
<b>Bumper Strip</b>	Supports
<b>Pallet Detection</b>	Supports
<b>Fork Collision Detection</b>	Supports
<b>Emergency Stop Button</b>	Supports
<b>Audible and Visual Alarm</b>	Supports
<b>Others</b>	
<b>Drive Method</b>	Front wheel driving and steering by motor
<b>Screen</b>	Supports
<b>Navigation Mode</b>	Laser SLAM (reflector panel)
<b>Manual Operation</b>	Manual controller (optional), HikRobot mobile terminal application
<b>Noise</b>	≤ 75 dB