

# MV-CE200-10GM/GC

20 MP 1" CMOS GigE Area Scan Camera



**GEN*<i>i>*CAM**

**GigE VISION**

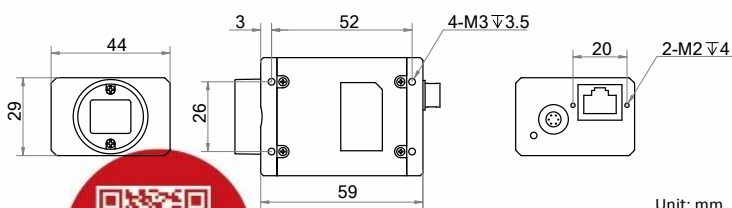
## Introduction

MV-CE200-10GM/GC camera adopts Sony® IMX183 sensor to provide high-quality image. It uses GigE interface to transmit non-compressed images in real time with max. frame rate reaching 5.9 fps.

## Key Feature

- Adopts GigE interface and max. transmission distance of 100 meters without relay.
- Up to 128 MB local memory for burst transmission and retransmission.
- Supports auto exposure control, LUT, Gamma correction, etc.
- Supports hardware trigger, software trigger, etc.
- Compatible with GigE Vision Protocol V2.0, GenICam Standard, and third-party software based on these protocol and standard.

## Dimension



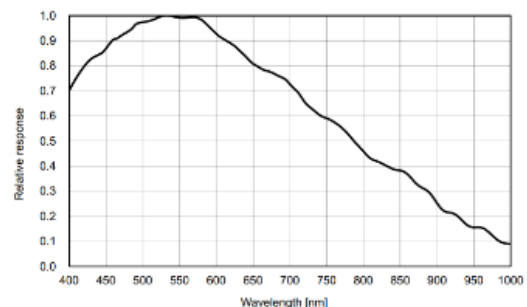
## Available Model

- Mono camera: MV-CE200-10GM
- Color camera: MV-CE200-10GC

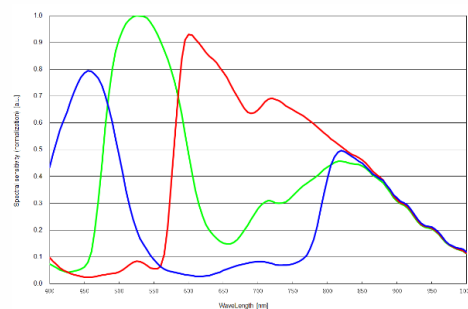
## Applicable Industry

Electronic semiconductor, factory automation, logistic code reading, medical packaging, etc.

## Sensor Quantum Efficiency



MV-CE200-10GM



MV-CE200-10GC



## Specification

Model	MV-CE200-10GM	MV-CE200-10GC
<b>Camera</b>		
Sensor type	CMOS, rolling shutter	
Sensor model	Sony® IMX183	
Pixel size	2.4 μm × 2.4 μm	
Sensor size	1"	
Resolution	5472 × 3648	
Max. frame rate	5.9 fps @5472 × 3648	
Dynamic range	65.5 dB	
SNR	41.5 dB	
Gain	0 dB to 20 dB	
Exposure time	46 μs to 2 sec	
Exposure mode	Off/Once/Continuous exposure mode, supports Global Reset	
Mono/color	Mono	Color
Pixel format	Mono 8/10/10p/12/12p	Mono 8/10/12, Bayer GB 8/10/10p/12/12p, YUV422Packed, YUV422_YUYV_Packed, RGB 8, BGR 8
Binning	Supports 1 × 1, 2 × 2, 4 × 4	
Decimation	Not support	
Reverse image	Supports horizontal reverse image output	
Image buffer	128 MB	
<b>Electrical feature</b>		
Data interface	Gigabit Ethernet, compatible with Fast Ethernet	
Digital I/O	6-pin Hirose connector provides power and I/O, including opto-isolated input × 1 (Line 0), opto-isolated output × 1 (Line 1), bi-directional non-isolated I/O × 1 (Line 2).	
Power supply	12 VDC, supports PoE	
Power consumption	Typ. 3.1 W@12 VDC	Typ. 3.5 W@12 VDC
<b>Mechanical</b>		
Lens mount	C-Mount	
Dimension	44 mm × 29 mm × 59 mm (1.7" × 1.1" × 2.3")	
Weight	Approx. 100 g (0.22 lb.)	
Ingress protection	IP30 (under proper lens installation and wiring)	
Temperature	Working temperature: 0 °C to 50 °C (32 °F to 122 °F) Storage temperature: -30 °C to 70 °C (-22 °F to 158 °F)	
Humidity	20% to 80% RH, non-condensing	
<b>General</b>		
Client software	MVS or third-party software meeting with GigE Vision Protocol	
Operating system	32/64-bit Windows XP/7/10, 32/64-bit Linux and 64-bit MacOS	
Compatibility	GigE Vision V2.0, GenICam	
Certification	CE, RoHS, KC	

# HIKROBOT

Hangzhou Hikrobot Co., Ltd.  
 en.hikrobotics.com