

MV-CA050-12GC

5 MP 2/3" CMOS GigE Area Scan Camera



GEN*i*CAM

GigE VISION

Introduction

MV-CA050-12GC camera adopts Sony® IMX264 sensor to provide high-quality image. It uses GigE interface to transmit non-compressed images in real time with max. frame rate reaching 24.1 fps.

Key Feature

- Adopts GigE interface and max. transmission distance of 100 meters without relay.
- Supports auto and manual adjustment for exposure control, LUT, Gamma correction, etc.
- Supports hardware trigger, software trigger, free run, etc.
- Compatible with GigE Vision Protocol V2.0, GenICam Standard, and third-party software based on these protocol and standard.

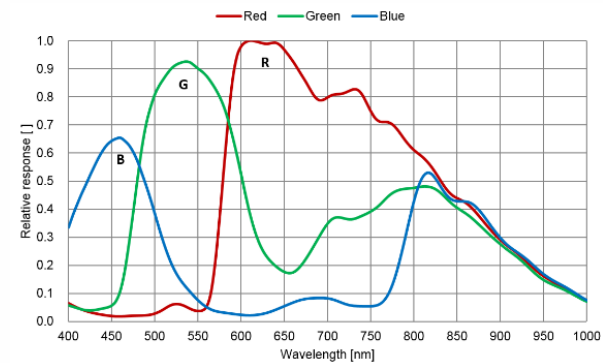
Available Model

MV-CA050-12GC

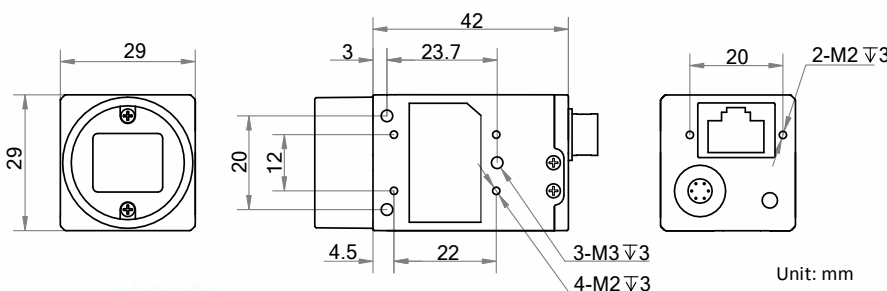
Applicable Industry

Electronic semiconductor, factory automation, food and beverage, medical packaging, etc.

Sensor Quantum Efficiency



Dimension



Specification

| | |
|---------------------------|---|
| Model | MV-CA050-12GC |
| Camera | |
| Sensor type | CMOS, global shutter |
| Sensor model | Sony® IMX264 |
| Pixel size | 3.45 µm × 3.45 µm |
| Sensor size | 2/3" |
| Resolution | 2448 × 2048 |
| Max. frame rate | 24.1 fps@ 2448 × 2048 |
| Dynamic range | 72 dB |
| SNR | 40.2 dB |
| Gain | 0 dB to 17 dB |
| Exposure time | UltraShort exposure mode: 1 µs to 14 µs Normal exposure mode: 15 µs to 10 sec |
| Exposure mode | Off/Once/Continuous exposure mode |
| Mono/color | Color |
| Pixel format | Mono 8/10/12, Bayer RG 8/10/10p/12/12p, YUV422Packed, YUV422_YUYV_Packed, RGB 8, BGR 8 |
| Binning | Supports 1 × 1, 1 × 2, 2 × 1, 1 × 4, 4 × 1, 2 × 2, 2 × 4, 4 × 2, 4 × 4 |
| Decimation | Supports 1 × 1, 2 × 2 |
| Reverse image | Supports horizontal and vertical reverse image output |
| Electrical feature | |
| Data interface | Gigabit Ethernet, compatible with Fast Ethernet |
| Digital I/O | 6-pin Hirose connector provides power and I/O, including opto-isolated input × 1 (Line 0), opto-isolated output × 1 (Line 1), bi-directional non-isolated I/O × 1 (Line 2). |
| Power supply | 9 VDC to 24 VDC, supports PoE |
| Power consumption | Typ. 3.2 W@12 VDC |
| Mechanical | |
| Lens mount | C-Mount |
| Dimension | 29 mm × 29 mm × 42 mm (1.1" × 1.1" × 1.7") |
| Weight | Approx. 88 g (0.19 lb) |
| Ingress protection | IP30 (under proper lens installation and wiring) |
| Temperature | Working temperature: 0 °C to 50 °C (32 °F to 122 °F) Storage temperature: -30 °C to 70 °C (-22 °F to 158 °F) |
| Humidity | 20% to 80% RH, non-condensing |
| General | |
| Client software | MVS or third-party software meeting with GigE Vision Protocol |
| Operating system | 32/64-bit Windows XP/7/10, 32/64-bit Linux and 64-bit MacOS |
| Compatibility | GigE Vision V2.0, GenICam |
| Certification | CE, RoHS, KC |

HIKROBOT

Hangzhou Hikrobot Co., Ltd.
 en.hikrobotics.com