



# AC SERVO NUTRUNNER





## FEATURES

### 1 Light Weight and Slim with Inline Configuration

- The housing accommodates all integral parts; torque transducer, gears, motor, and encoder.
- External moments can be absorbed by the housing to eliminate zero-balance fluctuations of torque transducer. → Increased reliability of tightening quality.
- The slim and flat body allows for multiple spindle applications with minimum center distances.

### 2 Full Digital Processing

- Torque transducer with built-in amplifier and AC/DC converter board.
- Improved noise resistance by transferring AC/DC converted digital signals to the controller.
- Easy tool change with no analog adjustments.

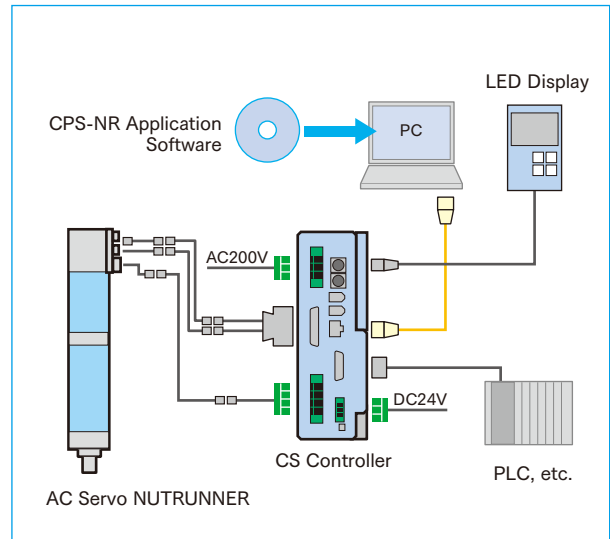
### 3 Multiple Tightening Methods

- Full operations from start of tightening to finish performed by a single program (32 steps max.)  
The IPS can store up to 31 programs.
- Applicable to yield point control method as well as torque control and angle control.

### 4 Various Data Processing Software

- The controller memory can store up to 2700 data.
- Data Control Filing System (DATA-CON) available as an option. (Capable of storing, searching and verifying collected data)

## SYSTEM CONFIGURATION



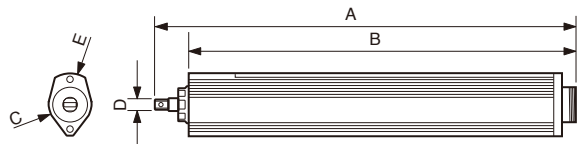
## 2300Sseries / 2400Qseries

## LOW TORQUE RANGE MODEL (2 - 40Nm)



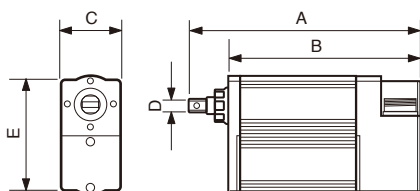
Please contact us for angle head and offset gear applications. We will provide a separate leaflet.

Model No.	Torque Range (Nm)	Maximum RPM (rpm)	Tool Weight (kg)
2301S	2~6	1080	1.8
2302S	5~22	540	1.9
2304S	12~34	250	1.9

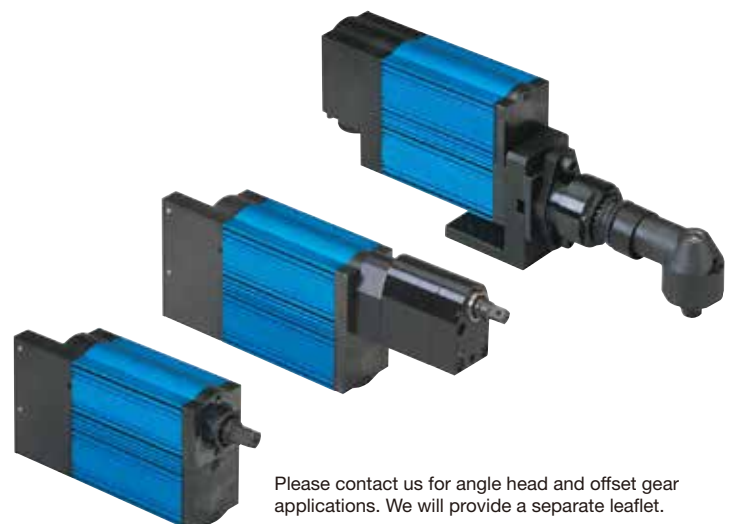


A	B	φC	□D	φE	(mm)
367	338	38	9.5	54	

Model No.	Torque Range (Nm)	Maximum RPM (rpm)	Tool Weight (kg)
2402Q	6~17	410	3.3
2405Q	16~47	190	3.3



A	B	C	□D	E	(mm)
215	179	54	12.7	109	



Please contact us for angle head and offset gear applications. We will provide a separate leaflet.

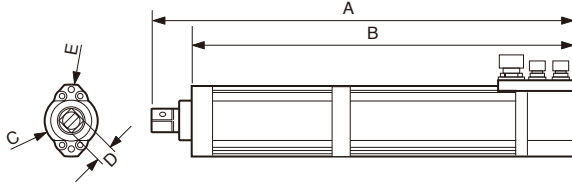


## AC SERVO MOTOR

### 2500Series

### MIDDLE TORQUE RANGE MODEL (20 - 160Nm)

Model No.	Torque Range (Nm)	Maximum RPM (rpm)	Tool Weight (kg)
2505S	19~56	610	5.5
2509S	33~94	285	5.5
2515S	42~120	285	5.5
2510S	24~68	490	5.7
2520S	57~162	230	5.7



Model No.	A	B	φC	□D	φE
2505S/2509S	430	394	56	12.7	76
2515S	460	417	56	19.05	76
2510S/2520S	518	475	56	19.05	76 (mm)



Please contact us for angle head and offset gear applications. We will provide a separate leaflet.

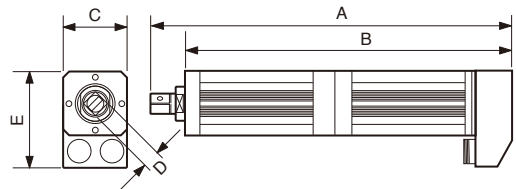
### 2600Series / 2600Qseries

### HIGH TORQUE RANGE MODEL (100 - 270Nm)

Please contact us for angle head and offset gear applications. We will provide a separate leaflet.

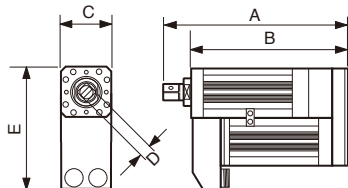


Model No.	Torque Range (Nm)	Maximum RPM (rpm)	Tool Weight (kg)
2620S	63~179	240	9.0
2630S	93~264	170	9.0

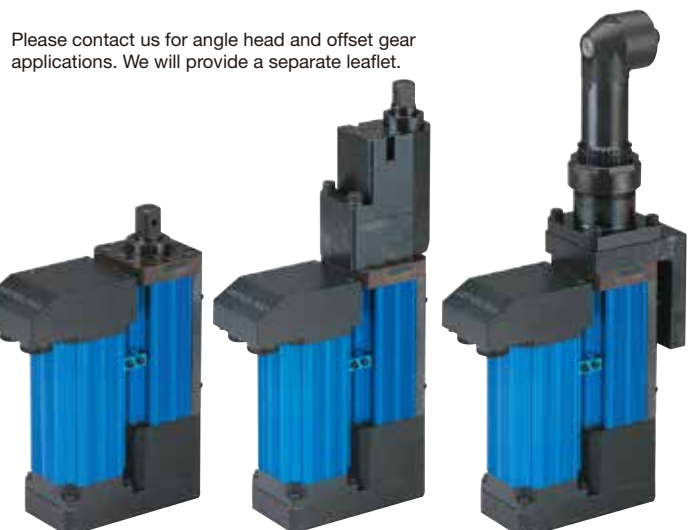


A	B	C	□D	E	W
445.5	402.5	79	19.05	118.5	(mm)

Model No.	Torque Range (Nm)	Maximum RPM (rpm)	Tool Weight (kg)
2620Q	63~180	240	9.5
2630Q	90~255	170	9.5



A	B	C	□D	E
287.5	244.5	79	19.05	198.5 (mm)



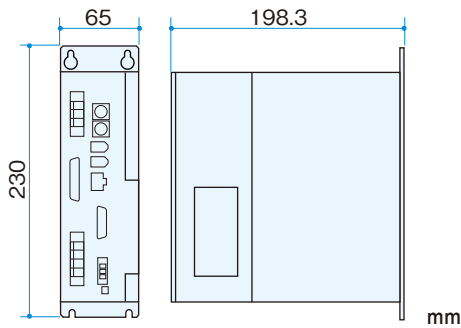
Please contact us for angle head and offset gear applications. We will provide a separate leaflet.



# AC SERVO NUTRUNNER



## Dimension



## How to order

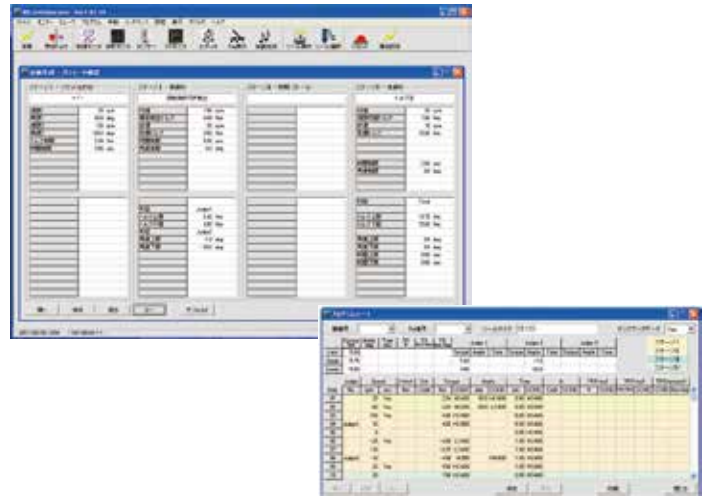
**CPS - NR - 75 \*\* - □**

Hardware □ FA network (optional)  
 Software □ CC: CC-Link  
 DV: DeviceNet  
 PF: Profibus  
 PN: PROFINET IO  
 EI: Ethernet/IP



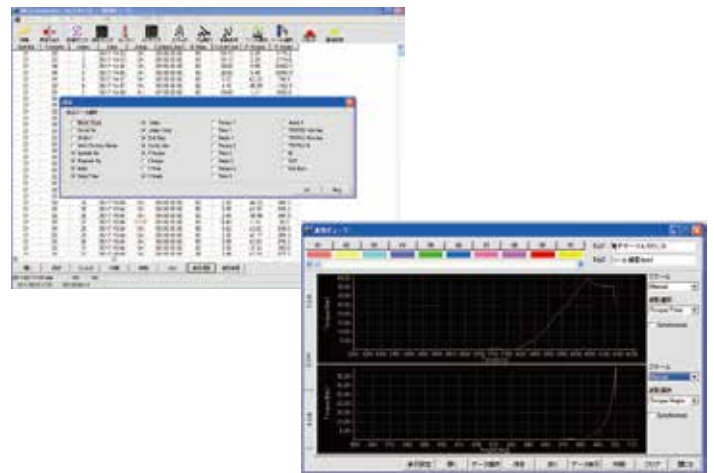
We provide various more "AC Servo" related products. Please feel free to contact us for any further information.

## Program Screen



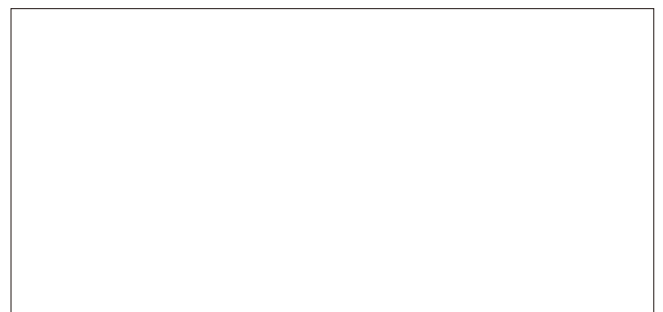
Program format is developed on the basis of the IPS model software. In addition to final judgment, further judgments at 3 arbitrary points can be set up. Automatic program generator is on-board. With automatic checking function of input errors, programs can be reliably created.

## Numerical and Waveform Monitor Screen



Numerical screen displays up to 31 selectable items as numerical results; including "Model Type" and "Work Position Name." \* Traceability function is available by linking product serial number and execution result. \* Waveform monitor displays multiple channels on the screen. Extended items for waveform monitor are available: Tool speed, torque rate and more. (\*: optional function)

The specifications may modify without notice.



# CORETEC INC.

Headquarters:  
 500 Akahama, Soja-shi, Okayama 719-1121, Japan  
 TEL +81 866-94-9011 FAX +81 866-94-1178