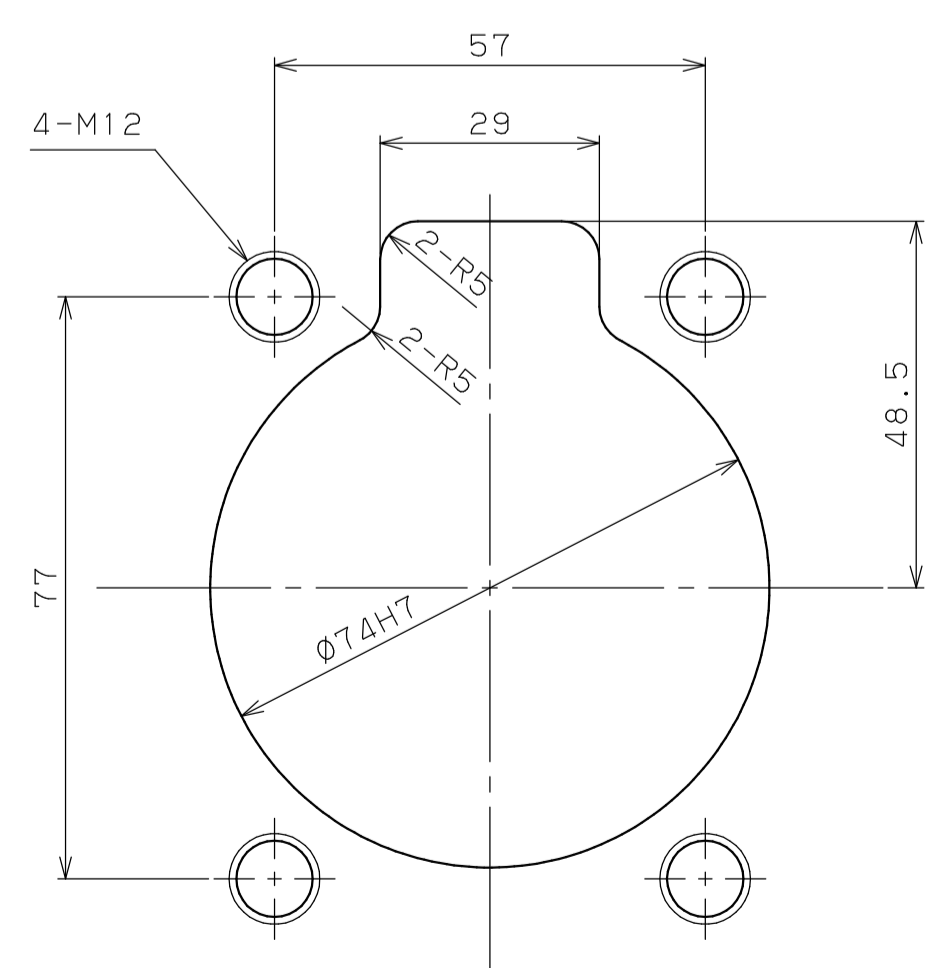
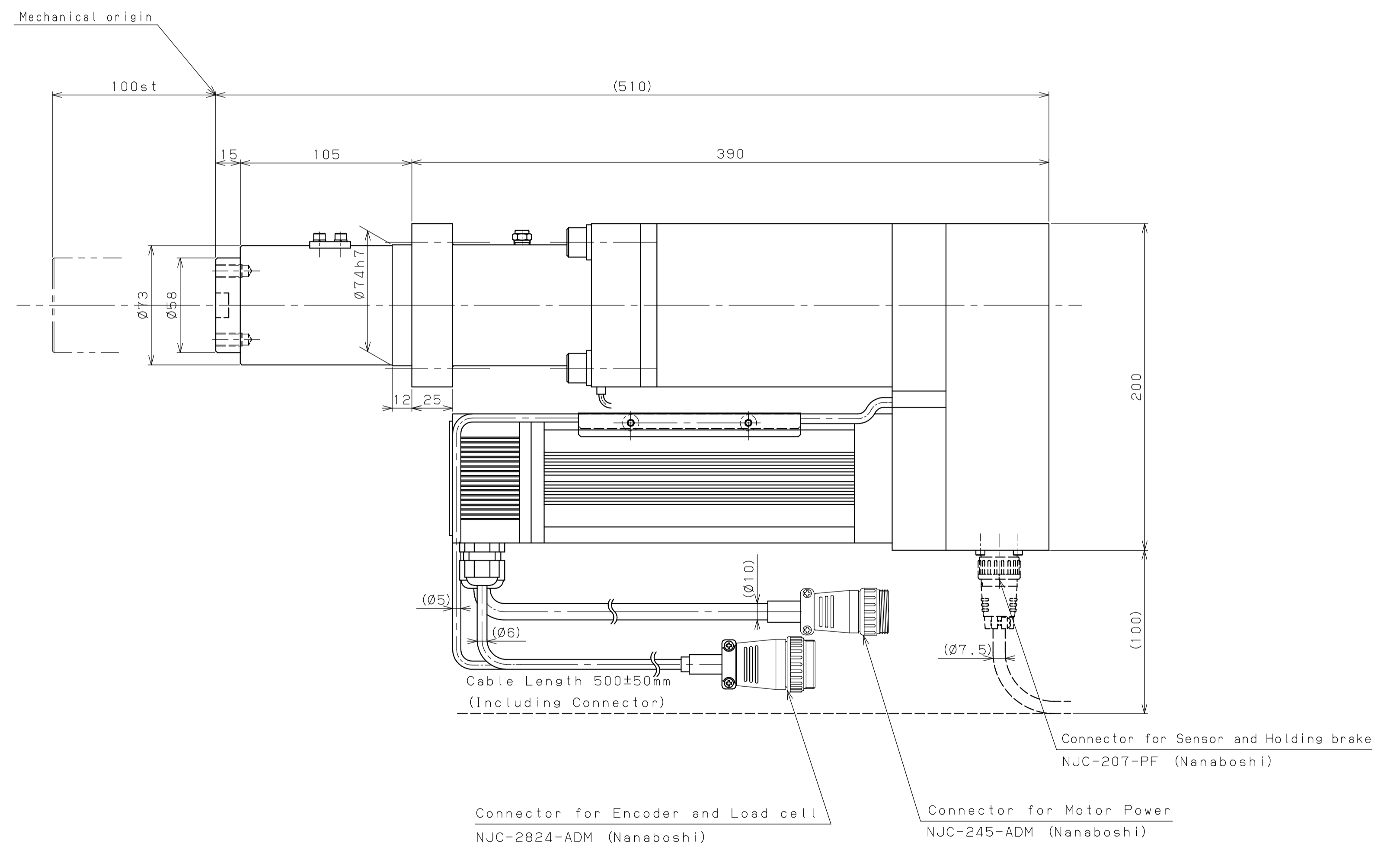
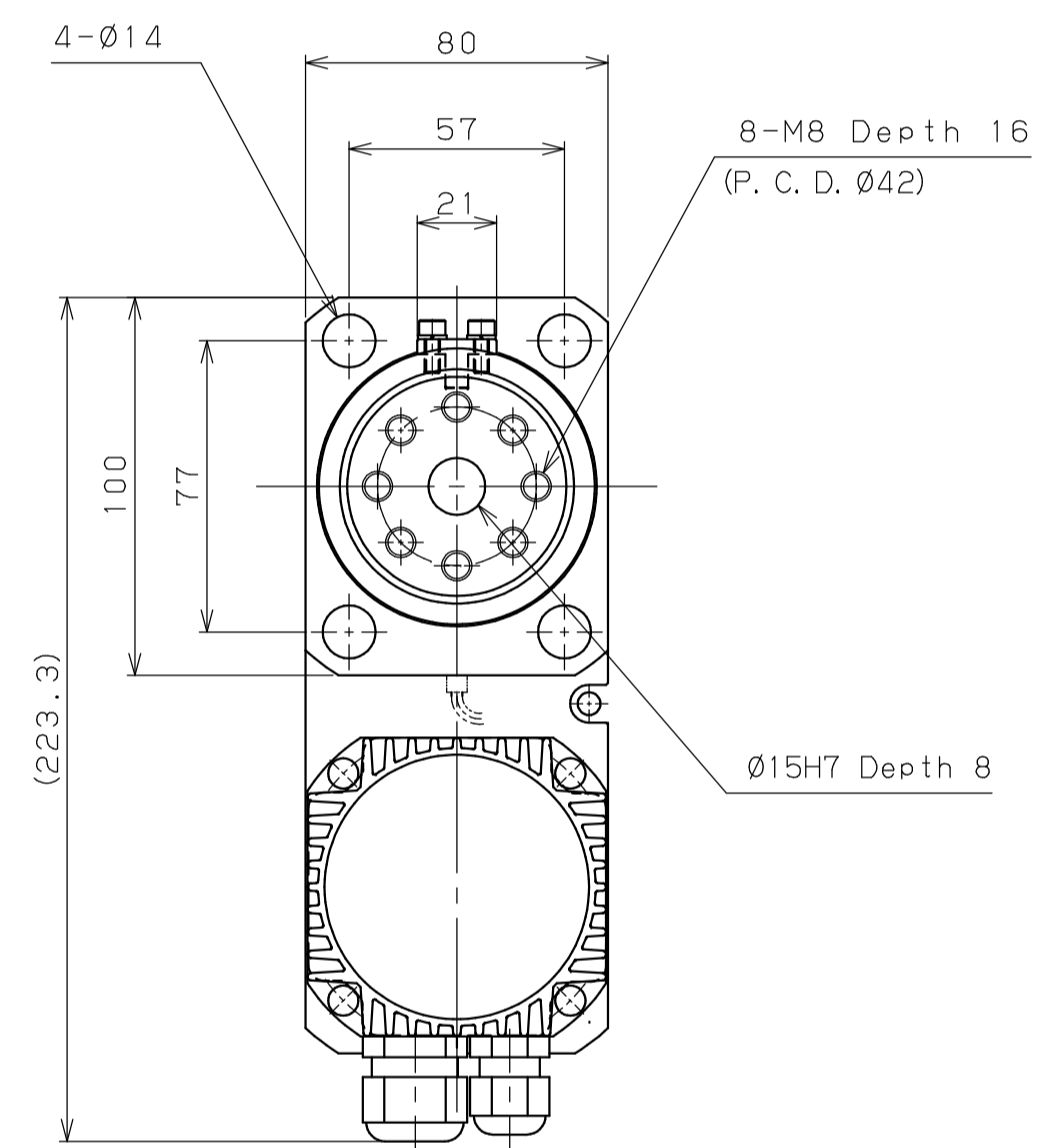
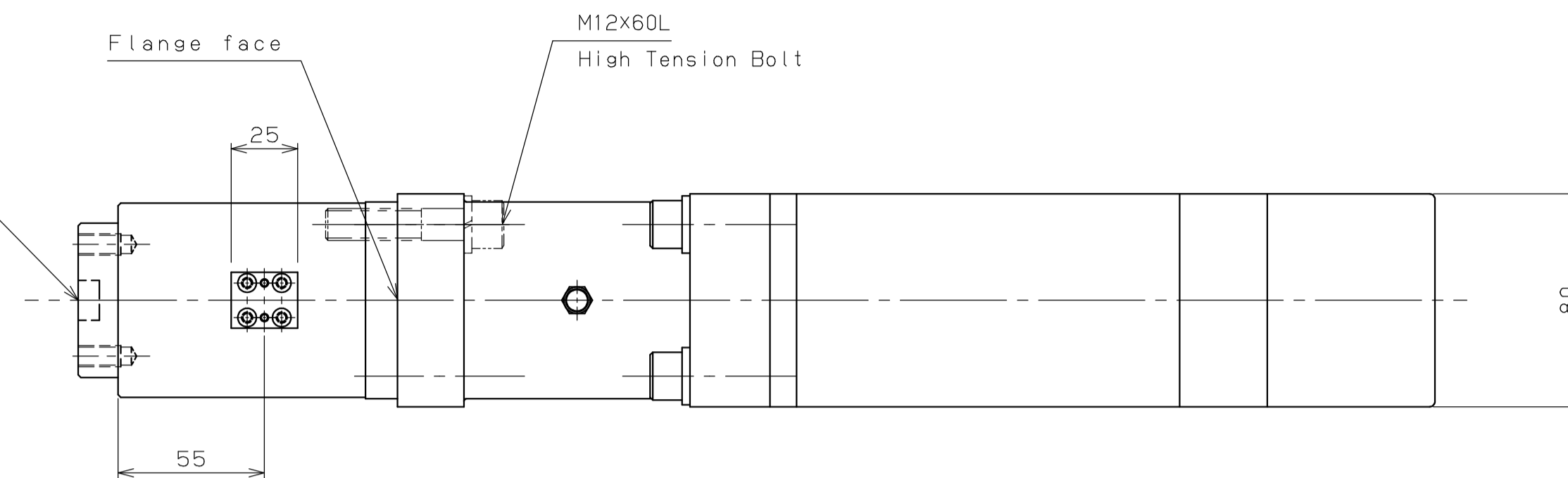


MARK	DATE	REVISION	CHA
△			
△			
△			

Around 10mm back and also 5mm forward from origin when origin searching
Pay attention when mechanical design



Mounting for CS20 (2:1)

- Spec.
1. Normal Force 14kN
 2. Max. Force 20kN
 3. Max. Stroke 100mm
 4. Max. Travel Speed 270mm/sec
 5. Max. Press Speed 30mm/sec

QTY	品数	SEMP. TRIM	定数処理	納入先	USER
MATERIAL	材質	HEAT. TRIM	熱処理	名称	TITLE
FINISH	仕上	HARDNESS	硬度	品名	SUB TITLE
WEIGHT	重量	CASE DEPTH	硬化層厚	品名	SUB TITLE
REMARKS	備考			J-F CODE	
APPD.	検図	CHK.	設計	DES.	製図
	Fujii		Takeda	DFT.	尺渡
				SCL.	寸法
				DATE	日付
				09.08.24	
				3RD. ANG. PRO.	三角法
				DWG. NO.	図番
				CS20-100B ENG	